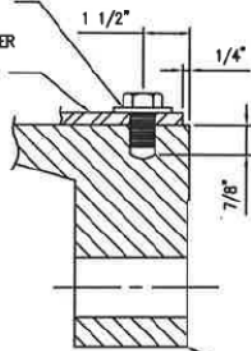


SHOP NOTE:
DRILL AND TAP 7/8"
DEEP FOR 5/8" DIA.
HEX HEAD CAP SCREW.
(TYP. 8 PLACES)

(8) 5/8" 11-UNC-2A X 1"
LONG HEX HEAD CAP SCREW
(A-193-B8) W/ LOCK WASHER
(304 S.S.)

BOLTING BAR



MW FLANGE

DETAIL 2

11
1
11
1
11
1
11
1
11
1