

SCALE License #9202 Expiry: 08/2023

This sheet has been digitally signed and electronically sealed. It remains the property of Morabito & Partners, Inc. All rights reserved. No part of this document may be reproduced, stored in a retrieval system, or transmitted in any form or by any means, without the prior written permission of Morabito & Partners, Inc.

No.	Date	Revisions

DESIGNED: HR/JB/RM DRAWN: HR/JB/RM
CHECKED: RM APPROVED: FPM

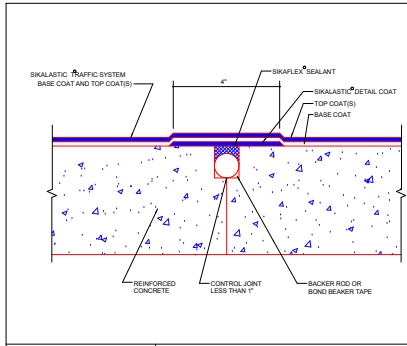
Project No.: 18217

Date: 04/26/21

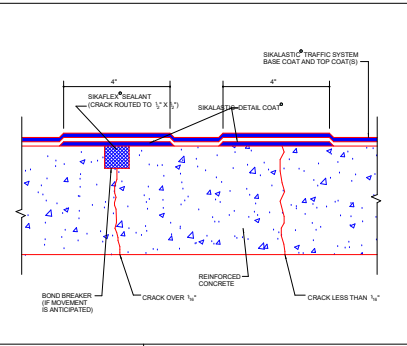
Scale: 3/4" = 1'-0"

Sheet Title:
TRAFFIC BEARING
WATERPROOFING
MEMBRANE & FINISH

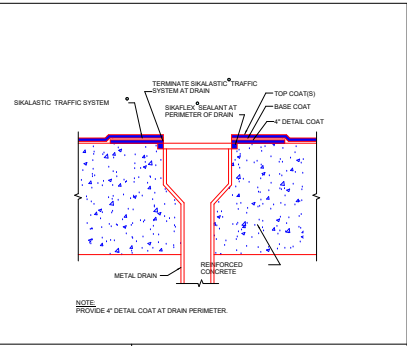
Sheet No.:
TBM-1



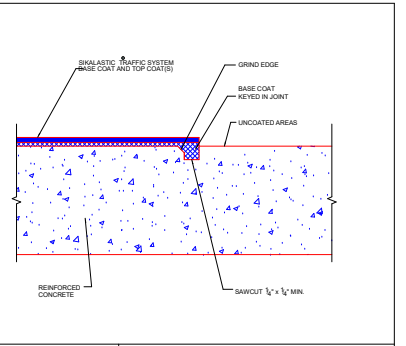
CONTROL JOINT DETAIL
SCALE: N.T.S. DATE: 9/13 DRAW. NO.: TR-1



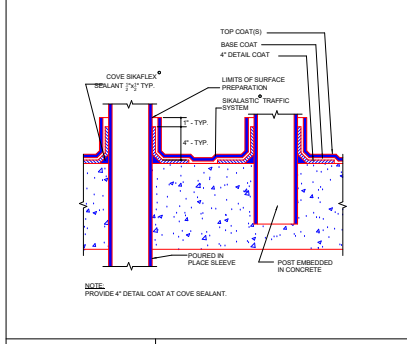
CRACK DETAIL
SCALE: N.T.S. DATE: 9/13 DRAW. NO.: TR-2



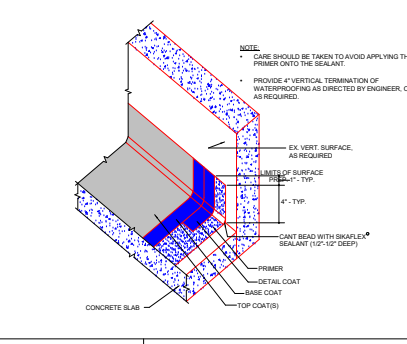
DRAIN DETAIL
SCALE: N.T.S. DATE: 9/13 DRAW. NO.: TR-3



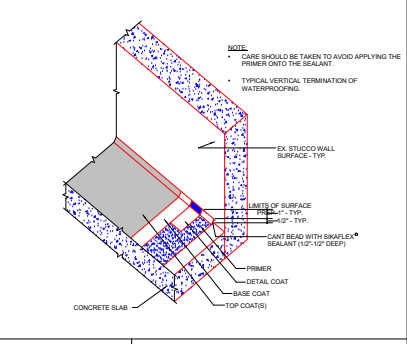
TERMINATION DETAIL
SCALE: N.T.S. DATE: 9/13 DRAW. NO.: TR-12



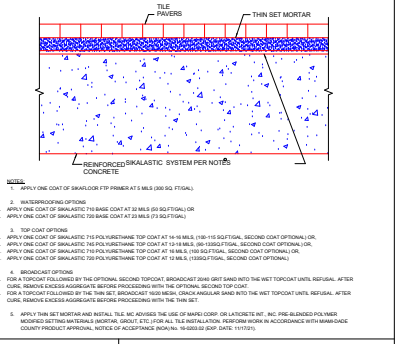
VERTICAL PROJECTION DETAIL
SCALE: N.T.S. DATE: 9/13 DRAW. NO.: TR-7



VERT SURFACE/SLAB JOINT DETAIL
SCALE: N.T.S. DATE: 3/20 DRAW. NO.: TR-8.1



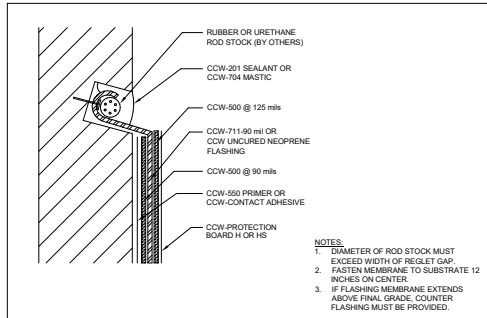
WALL/SLAB JOINT DETAIL
SCALE: N.T.S. DATE: 3/20 DRAW. NO.: TR-8.2



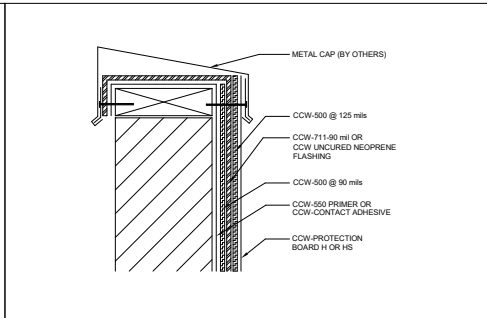
THIN SET TILE DETAIL
SCALE: N.T.S. DATE: 9/13 DRAW. NO.: TR-11

BALCONY WATERPROOFING GENERAL SEQUENCE

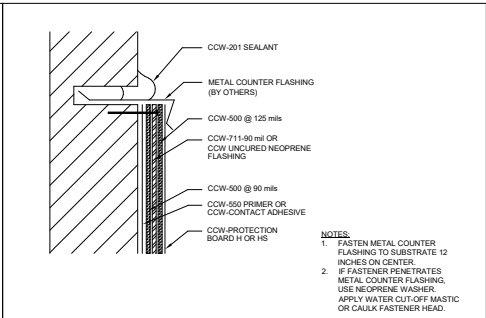
- AT TOP SIDE AND OUTSIDE VERTICAL FACE OF BALCONY DECKS, PROPERLY PREPARE CONCRETE SUBSTRATE FOR APPLICATION OF NEW WATERPROOFING MEMBRANES. GRIND OFF ANY EXISTING SURFACES AND SHOT BLAST/WATER BLAST TO ACHIEVE CONCRETE SURFACE PROFILE AS REQUIRED BY THE NEW COATING MANUFACTURER.
- FLOOD RESIDENTIAL BALCONY DECKS AND OUTLINE AREAS OF PONDING.
- ALLOW DECKS TO DRY.
- PRIME LOW SPOTS WITH SKADUR 21.
- WHILE SKADUR 21 IS WET AND TACKY, FILL LOW SPOTS WITH A 4.5 TO 1 MIXTURE OF UNIMIXED SAND TO SKADUR 22 LO-MOD EPOXY.
- APPLY SKALASTIC 710715 MEMBRANE TO TOP SIDE OF DECK IN ACCORDANCE WITH MANUFACTURER'S INSTRUCTIONS. (SYSTEM TYPE A1) FOR WATERPROOFING AS THE FINISH OR SYSTEM TYPE A4) FOR TILE AS THE FINISH.
 - WHERE APPLYING MEMBRANE OVER ORIGINAL CONCRETE USE SKA FTP PRIMER AND XYLENE WIFE BEFORE APPLICATION OF MEMBRANE.
 - WHERE APPLYING MEMBRANE OVER SKADUR 22 LO-MOD/SAND MIXTURE, SAND AND XYLENE WIFE BEFORE APPLICATION OF MEMBRANE.
- WHILE APPLYING SYSTEM TO TOP SIDE OF DECK, CARRY SYSTEM TO OUTSIDE VERTICAL FACE OF CONCRETE DECK, SAND TOP COAT TO REFUSAL, AND PAINT TO MATCH FACADE.



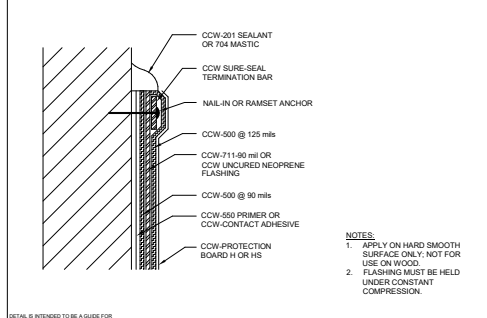
500-9A VERTICAL TERMINATION REGLET FLASHING



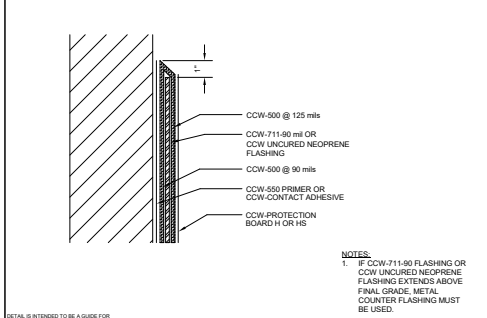
500-9B VERTICAL TERMINATION CAP FLASHING



500-9C VERTICAL TERMINATION COUNTERFLASHING



500-9D VERTICAL TERMINATION MECHANICAL



500-9E VERTICAL TERMINATION EMBEDDED TERMINATION

NOTE: IT SHALL BE THE RESPONSIBILITY OF THE CONTRACTOR TO ENGAGE THE MANUFACTURER TO VERIFY THE SUITABILITY OF ALL DETAILS TO BE USED ON THE JOB. THE CONTRACTOR SHALL SUBMIT ALL ADDITIONAL DETAILS THAT THE MANUFACTURER REQUIRES TO COMPLETE THE WORK.

SEAL License 96025
Expires 08/2023

This Seal has been digitally signed and verified. Board J. Miller is the user who has signed this seal. For more information on the seal process and how to verify the seal, please visit the seal website at www.seal.com.

morabito consultants

Structural Engineers | Remediation & Parking Consultants
200 N. Central Ave. | Fort Worth, TX 76102 | 817-339-1976
© Copyright Morabito Consultants, Inc.

No.	Date	Revisions

DESIGNED: HR/JB/RM DRAWN: HR/JB/RM

CHECKED: RM APPROVED: FPM

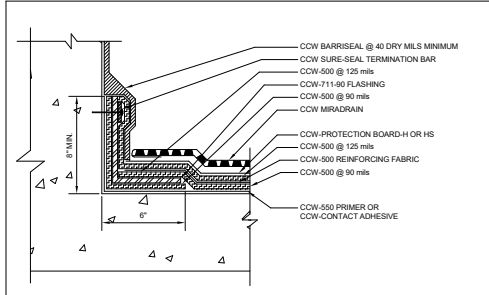
Project No.: 18217

Date: 04/26/21

Scale: 3" = 1'-0"

Sheet Title:
CCW-500 WALL DETAILS

Sheet No.:
WP-1

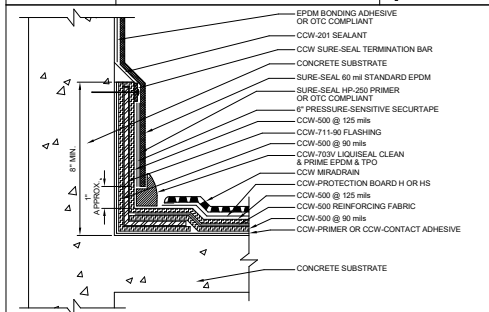


DETAIL IS INTENDED TO BE A GUIDE FOR WATERPROOFING INSTALLATION ONLY.

TERMINATION OF WATERPROOFING ON WALL SHALL BE BELOW FINISH COURSE

500-7D

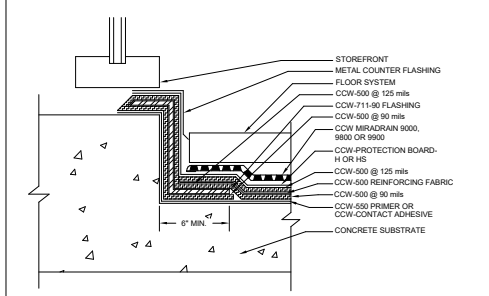
BARRISEAL AT WALL TO 500R DECK TIE-IN



DETAIL IS INTENDED TO BE A GUIDE FOR WATERPROOFING INSTALLATION ONLY.

500-4A.2

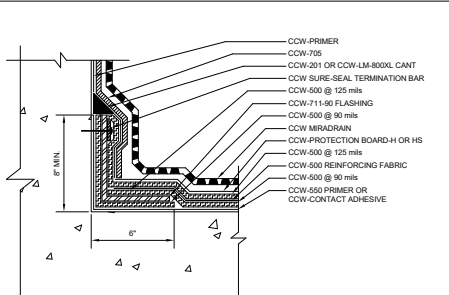
EXPOSED CURB & PARAPET FLASHING



DETAIL IS INTENDED TO BE A GUIDE FOR WATERPROOFING INSTALLATION ONLY.

500-4D

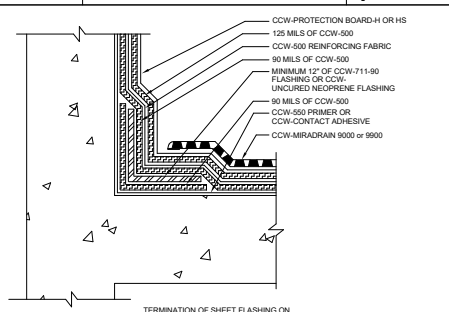
WINDOW FLASHING



DETAIL IS INTENDED TO BE A GUIDE FOR WATERPROOFING INSTALLATION ONLY.

500-7E

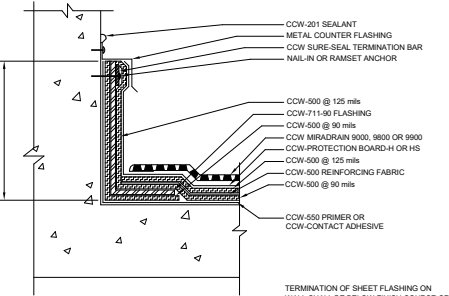
CCW-500R/ CCW-705 WALL TIE-IN



DETAIL IS INTENDED TO BE A GUIDE FOR WATERPROOFING INSTALLATION ONLY.

500-4B

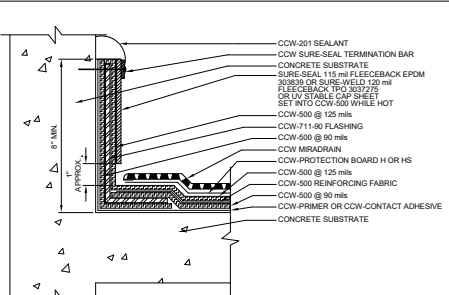
NON-EXPOSED CURB & PARAPET



DETAIL IS INTENDED TO BE A GUIDE FOR WATERPROOFING INSTALLATION ONLY.

500-4E

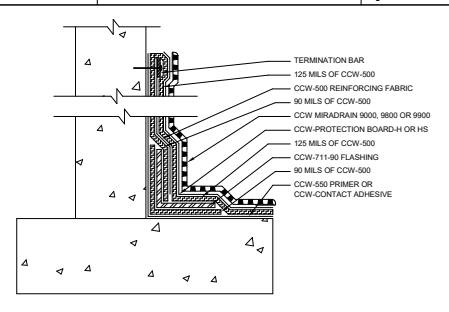
FLASHING TERMINATION



DETAIL IS INTENDED TO BE A GUIDE FOR WATERPROOFING INSTALLATION ONLY.

500-4A

EXPOSED CURB & PARAPET FLASHING



DETAIL IS INTENDED TO BE A GUIDE FOR WATERPROOFING INSTALLATION ONLY.

500-4C

FOUNDATION WALL /FOOTING TERMINATION



NOTE: IT SHALL BE THE RESPONSIBILITY OF THE CONTRACTOR TO ENGAGE THE MANUFACTURER TO VERIFY THE SUITABILITY OF ALL DETAILS TO BE USED ON THE JOB. THE CONTRACTOR SHALL SUBMIT ALL ADDITIONAL DETAILS THAT THE MANUFACTURER REQUIRES TO COMPLETE THE WORK.

CHAMPLAIN TOWERS SOUTH CONDOMINIUM
8777 COLLINS AVENUE
SURFSIDE, FLORIDA 33164

CHAMPLAIN TOWERS SOUTH 40-YEAR BUILDING
REPAIR & RESTORATION
PHASE 1C: OVERALL BUILDING
REPAIR AND RESTORATION

SEAL License 96028
Expires 02/29/20

This seal has been digitally signed and certified. Renewal is 30 days prior to the expiration date. If you have any questions, please contact the Registrar at 813.942.2000.



Structural Engineers | Remediation & Parking Consultants
200 W. Columbia Street | Fort Worth, Texas 76102
(817) 735-1888 | www.morabitoconsultants.com
© Copyright Morabito Consultants, Inc.

No.	Date	Revisions

DESIGNED HR/JB/RM DRAWN HR/JB/RM
CHECKED RM APPROVED FPM

Project No.: 18217
Date: 04/26/21
Scale: 3" = 1'-0"
Sheet Title:
CCW-500 SLAB-WALL
DETAILS

Sheet No.:
WP-2

No.	Date	Revisions

DESIGNED	HR/JB/RM	DRAWN	HR/JB/RM
CHECKED	RM	APPROVED	FPM

Project No.: 18217

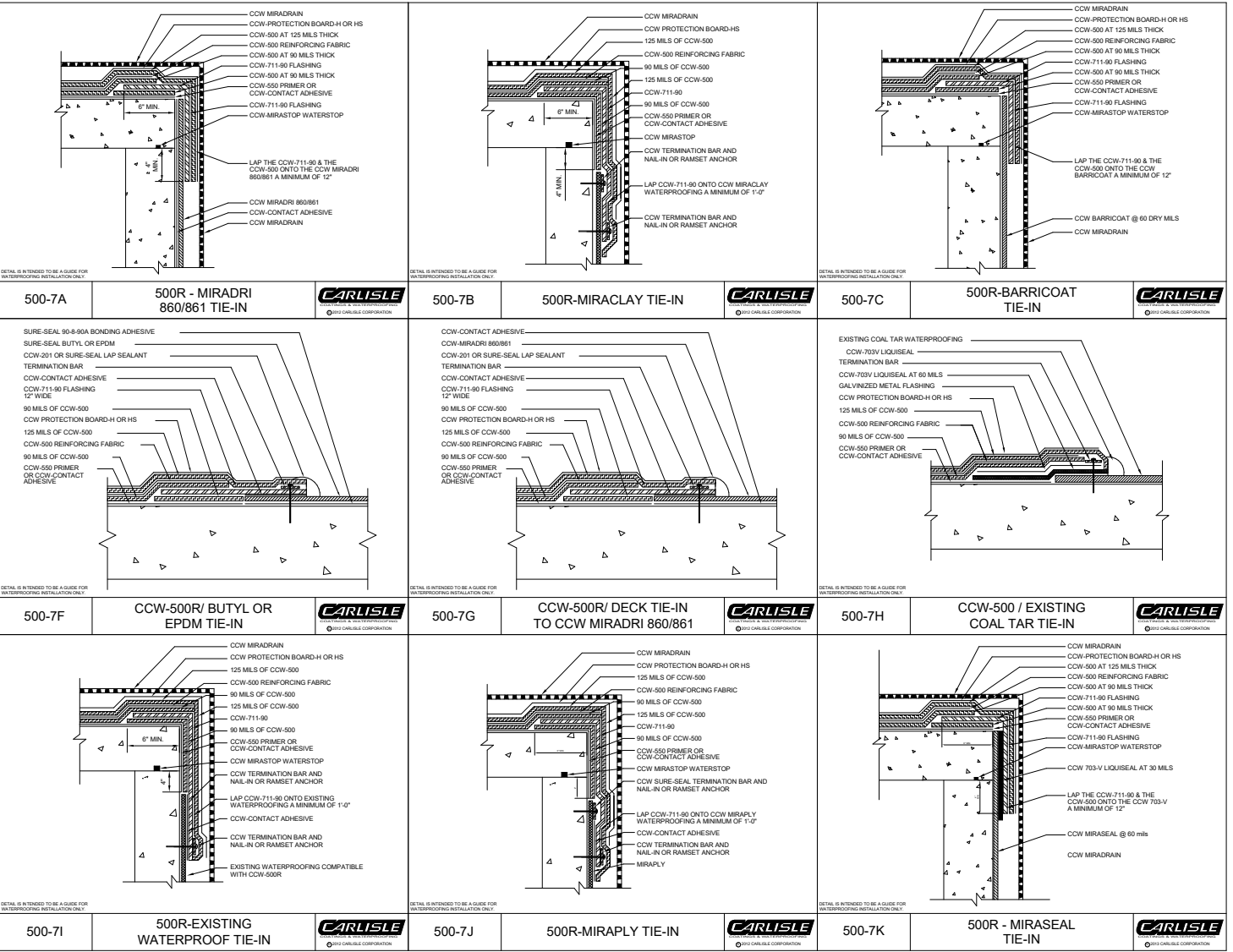
Date: 04/26/21

Scale: 3" = 1'-0"

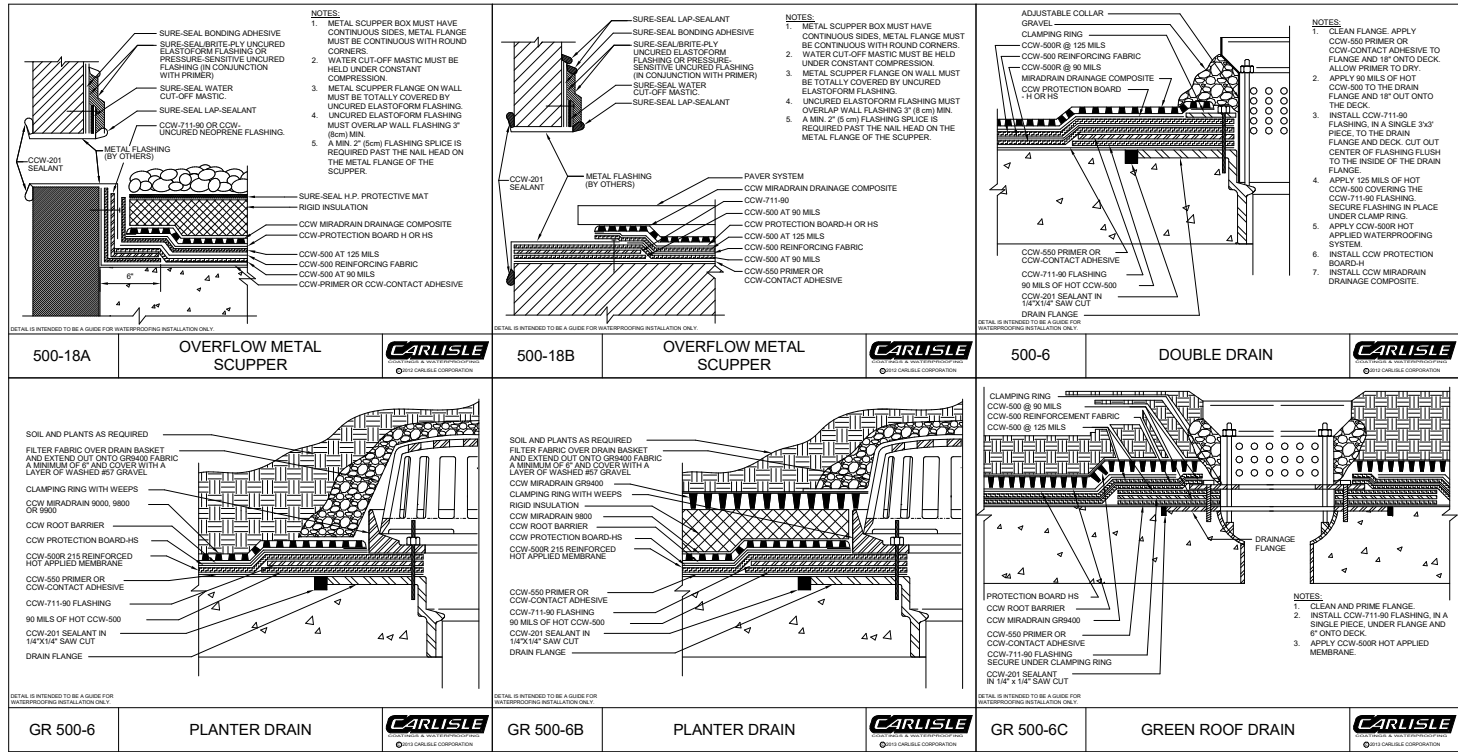
Sheet Title:
CCW-500 TIE-IN TO OTHER
MEMBRANES

Sheet No.:

WP-4



NOTE: IT SHALL BE THE RESPONSIBILITY OF THE CONTRACTOR TO ENGAGE THE MANUFACTURER TO VERIFY THE SUITABILITY OF ALL DETAILS TO BE USED ON THE JOB. THE CONTRACTOR SHALL SUBMIT ALL ADDITIONAL DETAILS THAT THE MANUFACTURER REQUIRES TO COMPLETE THE WORK.



NOTE: IT SHALL BE THE RESPONSIBILITY OF THE CONTRACTOR TO ENGAGE THE MANUFACTURER TO VERIFY THE SUITABILITY OF ALL DETAILS TO BE USED ON THE JOB. THE CONTRACTOR SHALL SUBMIT ALL ADDITIONAL DETAILS THAT THE MANUFACTURER REQUIRES TO COMPLETE THE WORK.

**CHAMPLAIN TOWERS SOUTH 40- YEAR BUILDING
 REPAIR & RESTORATION**
**PHASE IIC: OVERALL BUILDING
 REPAIR AND RESTORATION**

**8777 COLLINS AVENUE
 SURFSIDE, FLORIDA 33164**

SCALE: _____ License 96025
 EXPIRES: 09/30/21

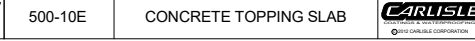
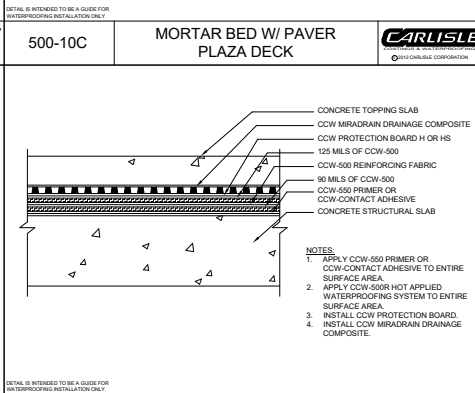
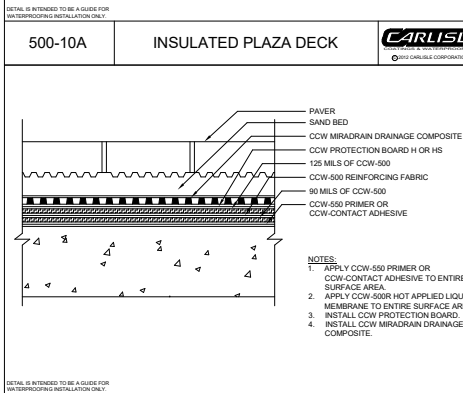
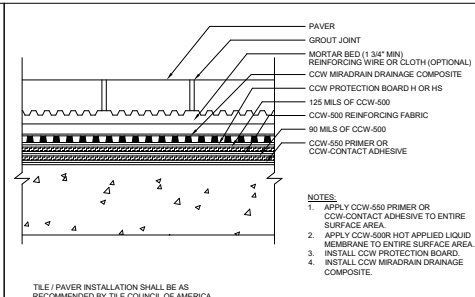
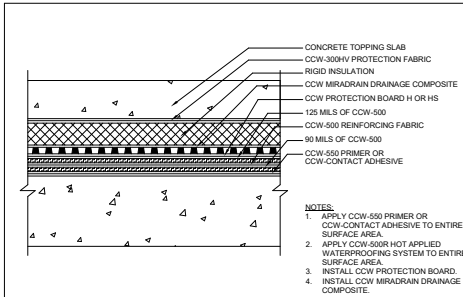
morabito consultants
 Structural Engineers | Remediation & Parking Consultants
 288 So. Collins Ave., 7th Floor, Boca Raton, FL 33433-3703
 P: 561.366.0010 www.morabitoconsultants.com
 © Copyright Morabito Consultants, Inc.

No.	Date	Revisions

DESIGNED: HR/JB/IRM	DRAWN: HR/JB/IRM
CHECKED: RM	APPROVED: FPM

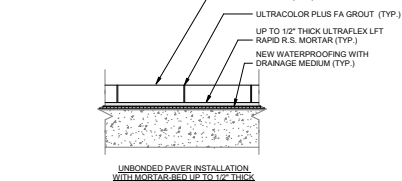
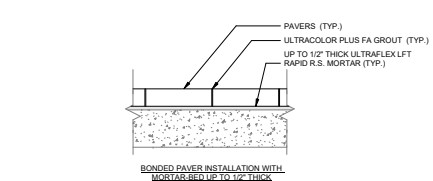
Project No.: 18217
 Date: 04/26/21
 Scale: 3" = 1'-0"
 Sheet Title: CCW-500 DRAINS

Sheet No.: **WP-5**



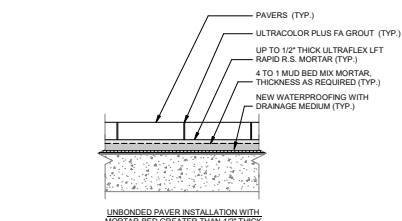
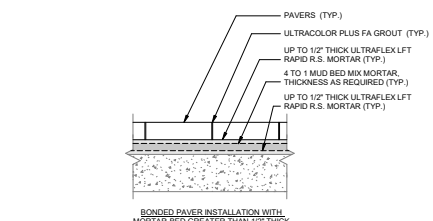
NOTE: IT SHALL BE THE RESPONSIBILITY OF THE CONTRACTOR TO ENGAGE THE MANUFACTURER TO VERIFY THE SUITABILITY OF ALL DETAILS TO BE USED ON THE JOB. THE CONTRACTOR SHALL SUBMIT ALL ADDITIONAL DETAILS THAT THE MANUFACTURER REQUIRES TO COMPLETE THE WORK.

- SET PAVING UNITS BASED ON APPROVED PATTERN, PLACING TO ALLOW FOR JOINT WIDTHS OF 1/16" TO 3/8". REVIEW SPECIFIC JOINT WIDTH WITH MANUFACTURER OF APPROVED PAVERS, DESIGNATED FOR THE WORK. BEFORE PROCEEDING WITH PAVEMENT INSTALLATION WORK.
- GROUT JOINTS SHALL BE UNIFORM AND STRAIGHT IN ALL DIRECTIONS AS INDICATED ON THE DRAWINGS.
- MAINTAIN NO GREATER THAN 1/16" HEIGHT DIFFERENCE BETWEEN ADJACENT PAVERS.
- GROUT/MORTAR JOINTS IN ACCORDANCE WITH ANSI A108.10.



- ALL SURFACES WHERE BONDED PAVERS ARE TO BE INSTALLED ARE TO BE STRUCTURALLY SOUND, STABLE, DRY, CLEAN, AND FREE OF ANY SUBSTANCE OR CONDITION THAT MAY REDUCE OR PREVENT PROPER ADHESION.
- MIX ULTRAFLEX LFT RAPID R.S. MORTAR (BY MAPEI) PER MANUFACTURER WRITTEN GUIDELINES.
- WITH THE APPROPRIATE NOTCHED TROWEL, AND WITH PRESSURE, APPLY A COAT OF ULTRAFLEX LFT RAPID R.S. MORTAR AS A BOND COAT MORTAR LAYER. SPREAD ONLY AS MUCH MORTAR AS CAN BE COVERED BEFORE PRODUCT SKINS OVER. OPEN TIMES FOR MATERIAL (MORTAR) USAGE CAN VARY WITH JOBSITE CONDITIONS.
- PLACE THE PAVERS FIRMLY IN THE WET MORTAR. PUSH PAVERS BACK AND FORTH IN A DIRECTION PERPENDICULAR TO THE TROWEL LINES. TO COLLAPSE THE MORTAR RIDGES AND HELP ACHIEVE MAXIMUM COVERAGE. ENSURE MINIMUM 95% CONTACT OF MORTAR TO BOTH THE PAVEMENT AND SUBSTRATE ON INSTALLATION. PERIODICALLY LIFT A FEW PAVERS TO CHECK FOR ACCEPTABLE COVERAGE.
- ENSURE THAT PAVERS ARE PRE-SEALED (BY MANUFACTURER) AND OR SEALED IN THE FIELD WITH ENGINEER APPROVED SILANE/SILOXANE PENETRATING SEALER PRIOR TO GROUT WORK (WHERE SPECIFIED/REQUIRED).
- ALLOW 3-4 HOURS OF MORTAR BED CURE PRIOR TO COMMENCING WITH GROUT WORK.
- REMOVE EXCESS MORTAR FROM THE JOINT AREAS SO THAT AT LEAST 2/3 OF THE PAVEMENT DEPTH IS AVAILABLE FOR GROUTING. GROUT JOINTS MUST BE CLEAN AND FREE OF STANDING WATER, DUST, DIRT AND FOREIGN MATTER PRIOR TO INTENDED GROUT WORK.
- MIX ULTRACOLOR PLUS FA GROUT (BY MAPEI) PER MANUFACTURER WRITTEN GUIDELINES. REVIEW "GROUTING IN HOT WEATHER" SECTION OF PRODUCT APPLICATION ON DATA SHEET TO ACCOMPLISH THE BEST RESULTS.
- SLIGHTLY MOISTEN PAVEMENT JOINT SURFACES WITH A DAMP SPONGE JUST PRIOR TO GROUT APPLICATION (TO AID APPLICATION). DO NOT FLOOD/SATURATE PAVERS, OR ALLOW FOR STANDING WATER AT UN-GROUTED JOINT AREAS.
- SPREAD GROUT IMMEDIATELY INTO THE DAMP JOINTS WITH A RUBBER GROUT FLOAT. MAKE SURE THAT ALL JOINTS ARE WELL COMPACTED AND FREE OF VOIDS AND/OR GAPS.
- REMOVE EXCESS GROUT FROM THE PAVEMENT SURFACE BY MOVING THE GROUT FLOAT DIAGONALLY TO THE JOINTS WHILE GROUT MATERIAL IS STILL FRESH. SMOOTH SURFACES WITH A DAMP SPONGE, AS NECESSARY.
- CLEAN GROUTED JOINTS PER MANUFACTURER GUIDELINES TO ACHIEVE DESIRED COLOR/CONSISTENCY.
- APPLY ULTRACARE PENETRATING PLUS STONE TIE/GROUT SEALER (BY MAPEI) AT GROUTED JOINTS AFTER SUFFICIENT CURE.

- MIX ULTRAFLEX LFT RAPID R.S. MORTAR (BY MAPEI) PER MANUFACTURER WRITTEN GUIDELINES.
- WITH THE APPROPRIATE NOTCHED TROWEL, AND WITH PRESSURE, APPLY A COAT OF ULTRAFLEX LFT RAPID R.S. MORTAR. SPREAD ONLY AS MUCH MORTAR AS CAN BE COVERED WITH PAVERS BEFORE PRODUCT SKINS OVER. OPEN TIMES FOR MATERIAL (MORTAR) USAGE CAN VARY WITH JOBSITE CONDITIONS.
- PLACE THE PAVERS FIRMLY IN THE WET MORTAR. PUSH PAVERS BACK AND FORTH IN A DIRECTION PERPENDICULAR TO THE TROWEL LINES. TO COLLAPSE THE MORTAR RIDGES AND HELP ACHIEVE MAXIMUM COVERAGE. ENSURE MINIMUM 95% CONTACT OF MORTAR TO BOTH THE PAVEMENT AND SUBSTRATE ON INSTALLATION. PERIODICALLY LIFT A FEW PAVERS TO CHECK FOR ACCEPTABLE COVERAGE.
- ENSURE THAT PAVERS ARE PRE-SEALED (BY MANUFACTURER) AND OR SEALED IN THE FIELD WITH ENGINEER APPROVED SILANE/SILOXANE PENETRATING SEALER PRIOR TO GROUT WORK (WHERE SPECIFIED/REQUIRED).
- ALLOW 3-4 HOURS OF MORTAR-BED CURE PRIOR TO COMMENCING WITH GROUT WORK.
- REMOVE EXCESS MORTAR FROM THE JOINT AREAS SO THAT AT LEAST 2/3 OF THE PAVEMENT DEPTH IS AVAILABLE FOR GROUTING. GROUT JOINTS MUST BE CLEAN AND FREE OF STANDING WATER, DUST, DIRT AND FOREIGN MATTER PRIOR TO INTENDED GROUT WORK.
- MIX ULTRACOLOR PLUS FA GROUT (BY MAPEI) PER MANUFACTURER WRITTEN GUIDELINES. REVIEW "GROUTING IN HOT WEATHER" SECTION OF PRODUCT APPLICATION ON DATA SHEET TO ACCOMPLISH THE BEST RESULTS.
- SLIGHTLY MOISTEN PAVEMENT JOINT SURFACES WITH A DAMP SPONGE JUST PRIOR TO GROUT APPLICATION (TO AID APPLICATION). DO NOT FLOOD/SATURATE PAVERS, OR ALLOW FOR STANDING WATER AT UN-GROUTED JOINT AREAS.
- SPREAD GROUT IMMEDIATELY INTO THE DAMP JOINTS WITH A RUBBER GROUT FLOAT. MAKE SURE THAT ALL JOINTS ARE WELL COMPACTED AND FREE OF VOIDS AND/OR GAPS.
- REMOVE EXCESS GROUT FROM THE PAVEMENT SURFACE BY MOVING THE GROUT FLOAT DIAGONALLY TO THE JOINTS WHILE GROUT MATERIAL IS STILL FRESH. SMOOTH SURFACES WITH A DAMP SPONGE, AS NECESSARY.
- CLEAN GROUTED JOINTS PER MANUFACTURER GUIDELINES TO ACHIEVE DESIRED COLOR/CONSISTENCY.
- APPLY ULTRACARE PENETRATING PLUS STONE TIE/GROUT SEALER (BY MAPEI) AT GROUTED JOINTS AFTER SUFFICIENT CURE.



- ALL SURFACES WHERE BONDED PAVERS ARE TO BE INSTALLED ARE TO BE STRUCTURALLY SOUND, STABLE, DRY, CLEAN, AND FREE OF ANY SUBSTANCE OR CONDITION THAT MAY REDUCE OR PREVENT PROPER ADHESION.
- MIX ULTRAFLEX LFT RAPID R.S. MORTAR (BY MAPEI) PER MANUFACTURER WRITTEN GUIDELINES.
- WITH THE APPROPRIATE NOTCHED TROWEL, AND WITH PRESSURE, APPLY A 1/2" THICK COAT OF ULTRAFLEX LFT RAPID R.S. MORTAR AS A BOND COAT MORTAR LAYER. SPREAD ONLY AS MUCH MORTAR AS CAN BE COVERED BEFORE PRODUCT SKINS OVER. OPEN TIMES FOR MATERIAL (MORTAR) USAGE CAN VARY WITH JOBSITE CONDITIONS.
- MIX 4 TO 1 MUDBED MIX MORTAR (BY MAPEI) PER MANUFACTURER WRITTEN GUIDELINES.
- WORK A FLOAT COAT LAYER OF 4 TO 1 MORTAR INTO (NET) BOND COAT MORTAR LAYER OF ULTRAFLEX LFT WITH A WOOD OR MAGNESIUM FLOAT. IMMEDIATELY FOLLOW WITH MORE TO 1 TO ACHIEVE THE DESIRED/REQUIRED THICKNESS (PRIOR TO FINAL APPLICATION OF ULTRAFLEX LFT MORTAR AND PAVEMENT INSTALLATION).
- AFTER MIXING, WITH THE APPROPRIATE NOTCHED TROWEL, AND WITH PRESSURE, APPLY A 1/2" THICK COAT OF ULTRAFLEX LFT RAPID R.S. MORTAR. SPREAD ONLY AS MUCH MORTAR AS CAN BE COVERED WITH PAVERS BEFORE PRODUCT SKINS OVER.
- PLACE THE PAVERS FIRMLY IN THE WET MORTAR. PUSH PAVERS BACK AND FORTH IN A DIRECTION PERPENDICULAR TO THE TROWEL LINES. TO COLLAPSE THE MORTAR RIDGES AND HELP ACHIEVE MAXIMUM COVERAGE. ENSURE MINIMUM 95% CONTACT OF MORTAR TO BOTH THE PAVEMENT AND SUBSTRATE ON INSTALLATION. PERIODICALLY LIFT A FEW PAVERS TO CHECK FOR ACCEPTABLE COVERAGE.
- ENSURE THAT PAVERS ARE PRE-SEALED (BY MANUFACTURER) AND OR SEALED IN THE FIELD WITH ENGINEER APPROVED SILANE/SILOXANE PENETRATING SEALER PRIOR TO GROUT WORK (WHERE SPECIFIED/REQUIRED).
- ALLOW 3-4 HOURS OF MORTAR-BED CURE PRIOR TO COMMENCING WITH GROUT WORK.
- REMOVE EXCESS MORTAR FROM THE JOINT AREAS SO THAT AT LEAST 2/3 OF THE PAVEMENT DEPTH IS AVAILABLE FOR GROUTING. GROUT JOINTS MUST BE CLEAN AND FREE OF STANDING WATER, DUST, DIRT AND FOREIGN MATTER PRIOR TO INTENDED GROUT WORK.
- MIX ULTRACOLOR PLUS FA GROUT (BY MAPEI) PER MANUFACTURER WRITTEN GUIDELINES. REVIEW "GROUTING IN HOT WEATHER" SECTION OF PRODUCT APPLICATION ON DATA SHEET TO ACCOMPLISH THE BEST RESULTS.
- SLIGHTLY MOISTEN PAVEMENT JOINT SURFACES WITH A DAMP SPONGE JUST PRIOR TO GROUT APPLICATION (TO AID APPLICATION). DO NOT FLOOD/SATURATE PAVERS, OR ALLOW FOR STANDING WATER AT UN-GROUTED JOINT AREAS.
- SPREAD GROUT IMMEDIATELY INTO THE DAMP JOINTS WITH A RUBBER GROUT FLOAT. MAKE SURE THAT ALL JOINTS ARE WELL COMPACTED AND FREE OF VOIDS AND/OR GAPS.
- REMOVE EXCESS GROUT FROM THE PAVEMENT SURFACE BY MOVING THE GROUT FLOAT DIAGONALLY TO THE JOINTS WHILE GROUT MATERIAL IS STILL FRESH. SMOOTH SURFACES WITH A DAMP SPONGE, AS NECESSARY.
- CLEAN GROUTED JOINTS PER MANUFACTURER GUIDELINES TO ACHIEVE DESIRED COLOR/CONSISTENCY.
- APPLY ULTRACARE PENETRATING PLUS STONE TIE/GROUT SEALER (BY MAPEI) AT GROUTED JOINTS AFTER SUFFICIENT CURE.

- MIX 4 TO 1 MUDBED MIX MORTAR (BY MAPEI) PER MANUFACTURER WRITTEN GUIDELINES.
- APPLY 4 TO 1 MORTAR TO DESIRED/REQUIRED THICKNESS (PRIOR TO APPLICATION OF ULTRAFLEX LFT MORTAR AND PAVEMENT INSTALLATION).
- AFTER MIXING, WITH THE APPROPRIATE NOTCHED TROWEL, AND WITH PRESSURE, APPLY A 1/2" THICK COAT OF ULTRAFLEX LFT RAPID R.S. MORTAR. SPREAD ONLY AS MUCH MORTAR AS CAN BE COVERED WITH PAVERS BEFORE PRODUCT SKINS OVER. OPEN TIMES FOR MATERIAL (MORTAR) USAGE CAN VARY WITH JOBSITE CONDITIONS.
- PLACE THE PAVERS FIRMLY IN THE WET MORTAR. PUSH PAVERS BACK AND FORTH IN A DIRECTION PERPENDICULAR TO THE TROWEL LINES. TO COLLAPSE THE MORTAR RIDGES AND HELP ACHIEVE MAXIMUM COVERAGE. ENSURE MINIMUM 95% CONTACT OF MORTAR TO BOTH THE PAVEMENT AND SUBSTRATE ON INSTALLATION. PERIODICALLY LIFT A FEW PAVERS TO CHECK FOR ACCEPTABLE COVERAGE.
- ENSURE THAT PAVERS ARE PRE-SEALED (BY MANUFACTURER) AND OR SEALED IN THE FIELD WITH ENGINEER APPROVED SILANE/SILOXANE PENETRATING SEALER PRIOR TO GROUT WORK (WHERE SPECIFIED/REQUIRED).
- ALLOW 3-4 HOURS OF MORTAR-BED CURE PRIOR TO COMMENCING WITH GROUT WORK.
- SPREAD GROUT IMMEDIATELY INTO THE DAMP JOINTS WITH A RUBBER GROUT FLOAT. MAKE SURE THAT ALL JOINTS ARE WELL COMPACTED AND FREE OF VOIDS AND/OR GAPS.
- REMOVE EXCESS GROUT FROM THE PAVEMENT SURFACE BY MOVING THE GROUT FLOAT DIAGONALLY TO THE JOINTS WHILE GROUT MATERIAL IS STILL FRESH. SMOOTH SURFACES WITH A DAMP SPONGE, AS NECESSARY.
- CLEAN GROUTED JOINTS PER MANUFACTURER GUIDELINES TO ACHIEVE DESIRED COLOR/CONSISTENCY.
- APPLY ULTRACARE PENETRATING PLUS STONE TIE/GROUT SEALER (BY MAPEI) AT GROUTED JOINTS AFTER SUFFICIENT CURE.

1 BONDED VS UNBONDED PAVEMENT INSTALLATIONS
1 1/2" = 1'-0"

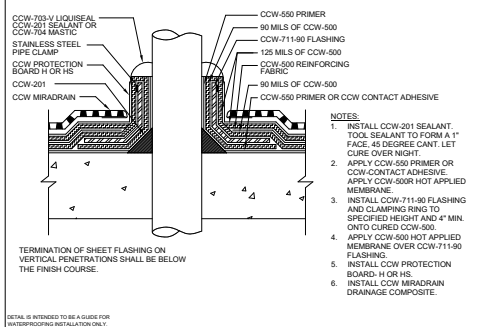
CHAMPLAIN TOWERS SOUTH CONDOMINIUM
8777 COLLINS AVENUE
SURFSIDE, FLORIDA 33154

CHAMPLAIN TOWERS SOUTH 40-YEAR BUILDING
REPAIR & RESTORATION
PHASE 1C: OVERALL BUILDING
REPAIR AND RESTORATION

SCALE: _____
License: 98020
Expires: 03/31/2023

morabito consultants
Structural Engineers | Remediation & Parking Consultants
2881 NW Columbia Ave., Suite 1000, Fort Lauderdale, FL 33309-3976
(954) 351-1000 | www.morabitoconsultants.com
© Copyright Morabito Consultants, Inc.

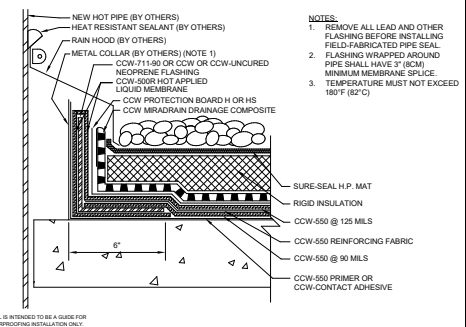
No.	Date	Revisions
DESIGNED	HR/JB/RM	DRAWN HR/JB/RM
CHECKED	RM	APPROVED FPM
Project No.: 18217		
Date: 04/26/21		
Scale: As indicated		
Sheet Title: CCW-500 PAVERS		
Sheet No.: _____		



DETAIL IS INTENDED TO BE A GUIDE FOR WATERPROOFING INSTALLATION ONLY.

500-8A PIPE AND PENETRATION FLASHING

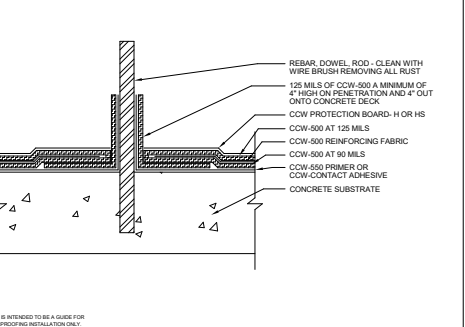
CARLISLE
©2023 CARLISLE CORPORATION



DETAIL IS INTENDED TO BE A GUIDE FOR WATERPROOFING INSTALLATION ONLY.

500-8B FIELD FABRICATED NEW HOT STACK

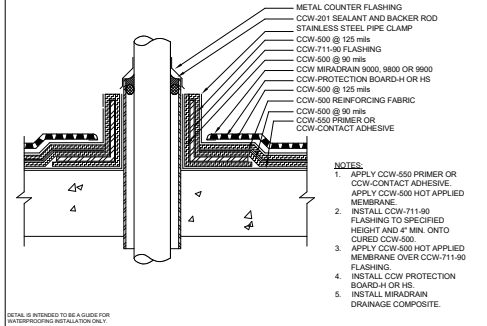
CARLISLE
©2023 CARLISLE CORPORATION



DETAIL IS INTENDED TO BE A GUIDE FOR WATERPROOFING INSTALLATION ONLY.

500-8C SMALL PENETRATIONS

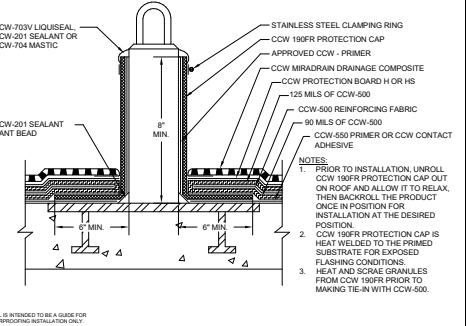
CARLISLE
©2023 CARLISLE CORPORATION



DETAIL IS INTENDED TO BE A GUIDE FOR WATERPROOFING INSTALLATION ONLY.

500-8D PIPE SLEEVE PENETRATION FLASHING

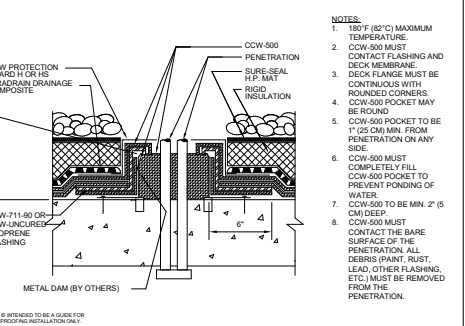
CARLISLE
©2023 CARLISLE CORPORATION



DETAIL IS INTENDED TO BE A GUIDE FOR WATERPROOFING INSTALLATION ONLY.

500-8E CCW 190FR PROTECTION CAP - ROOF DAVIT

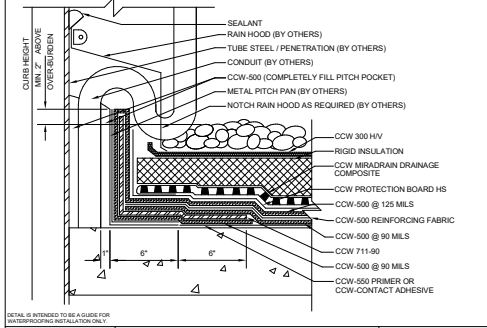
CARLISLE
©2023 CARLISLE CORPORATION



DETAIL IS INTENDED TO BE A GUIDE FOR WATERPROOFING INSTALLATION ONLY.

500-16A FIELD FABRICATED CCW-500 POCKET

CARLISLE
©2023 CARLISLE CORPORATION



DETAIL IS INTENDED TO BE A GUIDE FOR WATERPROOFING INSTALLATION ONLY.

500-16B FIELD FABRICATED PITCH POCKET

CARLISLE
©2023 CARLISLE CORPORATION

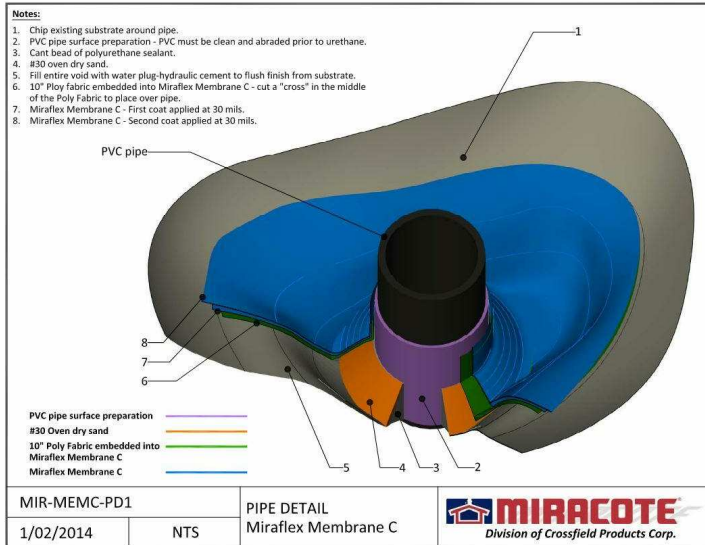
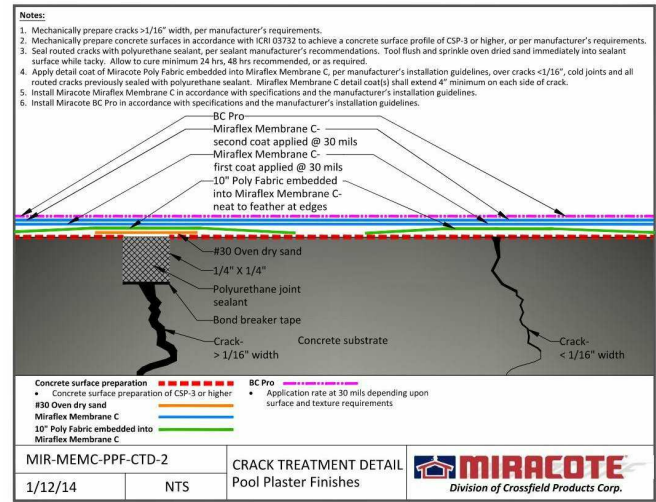
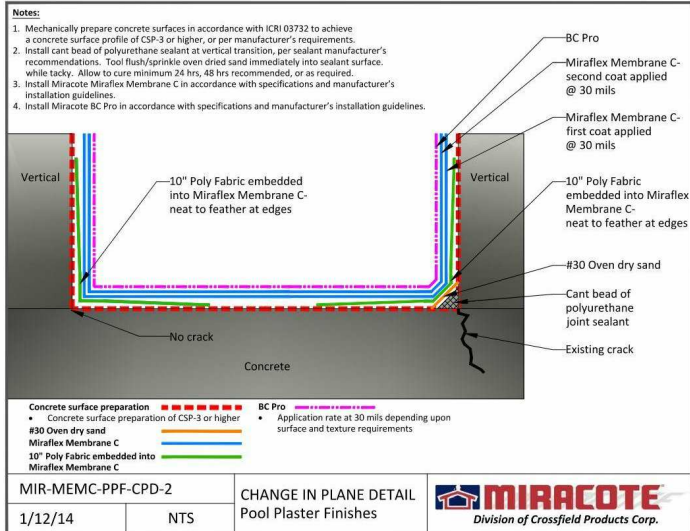
NOTE: IT SHALL BE THE RESPONSIBILITY OF THE CONTRACTOR TO ENGAGE THE MANUFACTURER TO VERIFY THE SUITABILITY OF ALL DETAILS TO BE USED ON THE JOB. THE CONTRACTOR SHALL SUBMIT ALL ADDITIONAL DETAILS THAT THE MANUFACTURER REQUIRES TO COMPLETE THE WORK.

No.	Date	Revisions

DESIGNED: HR/JB/RM
DRAWN: HR/JB/RM
CHECKED: RM
APPROVED: FPM

Project No.: 18217
Date: 04/26/21
Scale: 3" = 1'-0"
Sheet Title: CCW-500 PENETRATIONS

Sheet No.: **WP-7**



CHAMPLAIN TOWERS
SOUTH CONDOMINIUM
8777 COLLINS AVENUE
SURFSIDE, FLORIDA 33164

CHAMPLAIN TOWERS SOUTH 40-YEAR BUILDING
REPAIR & RESTORATION
PHASE IIC: OVERALL BUILDING
REPAIR AND RESTORATION

SEAL License 96025
Expires 08/2019

This seal has been digitally signed and certified. Please refer to the seal data for the date and time and the signature location and other information.

morabito
consultants
Structural Engineers | Remediation & Parking Consultants
200 W. Collins Blvd | Fort Worth, Texas, TX 76104
© Copyright Morabito Consultants, Inc.

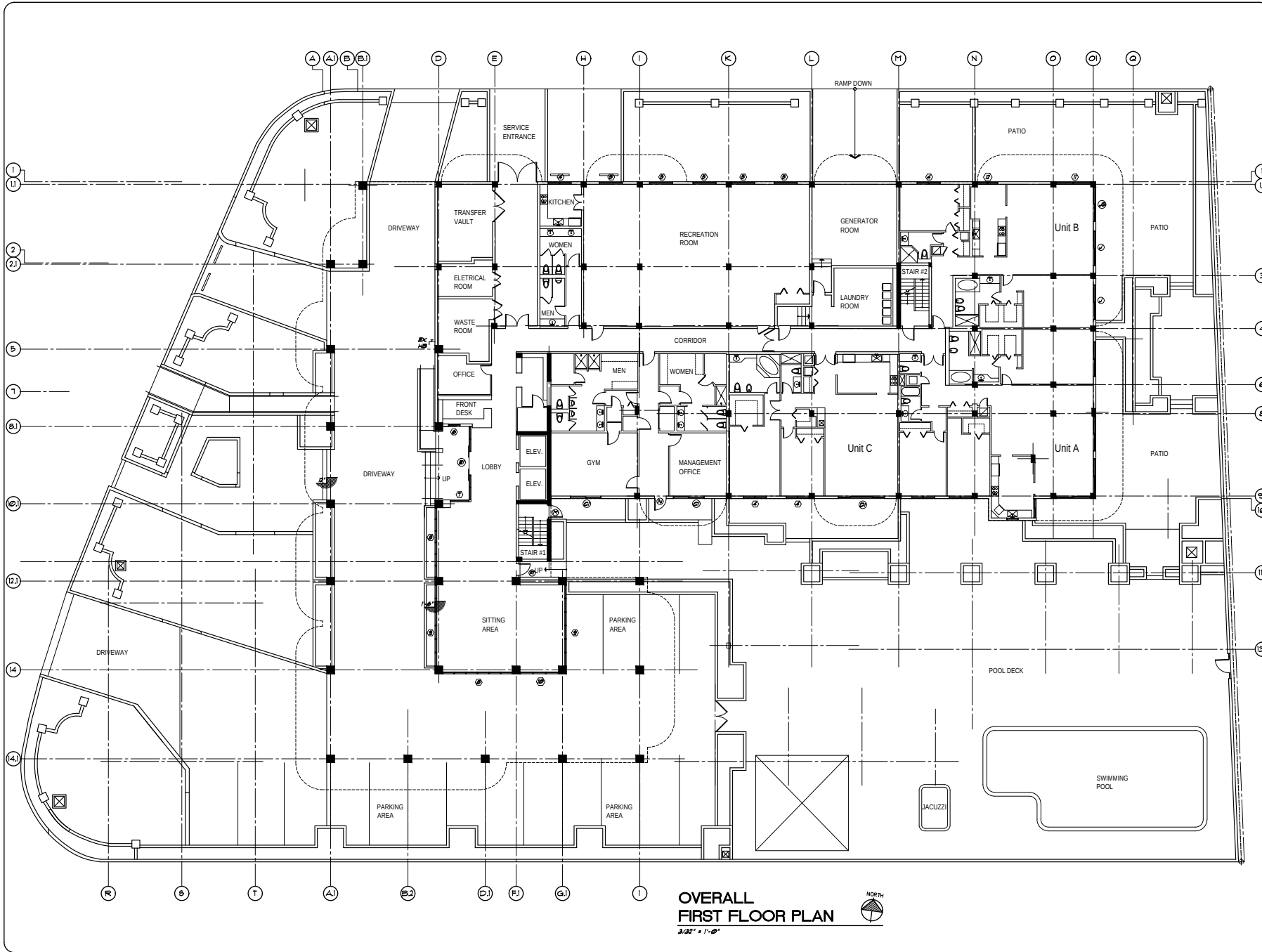
No.	Date	Revisions

DESIGNED: Designer DRAWN: Author
CHECKED: Checker APPROVED: Approver

Project No.: 18217
Date: 04/26/21
Scale:

Sheet Title:
MIRACOTE POOL
MEMBRANE

Sheet No.:
WP-8



OVERALL FIRST FLOOR PLAN
 3/32" = 1'-0"
 NORTH

SCOTT D. DYER ARCHITECT, P.A.
 AA 001929
 AR 001801
 6671 CONCH COURT
 BOYNTON BEACH, FLORIDA
 33437
 (561) 596-7503

THIS DRAWING, AS AN INSTRUMENT OF SERVICE IS THE PROPERTY OF THE ARCHITECT AND IS NOT TO BE USED OR REPRODUCED IN WHOLE OR IN PART, WITHOUT THE ARCHITECT'S EXPRESS WRITTEN CONSENT.

TO THE BEST OF MY KNOWLEDGE, THE DRAWINGS AND SPECIFICATIONS SUBMITTED HEREWITH, COMPLY WITH EXISTING INTERPRETATIONS AND PROVISIONS OF THE APPLICABLE BUILDING CODES IN EFFECT AT THE DATE SHOWN BELOW. NO WARRANTY, EXPRESS OR IMPLIED IS HEREBY GIVEN.

COPYRIGHT © 2018
 SCOTT D. DYER ARCHITECT, P.A.
 ALL RIGHTS RESERVED

SCOTT D. DYER AR-0011801

THIS DOCUMENT HAS BEEN DIGITALLY SIGNED AND SEALED BY SCOTT D. DYER ARCHITECT, P.A. USING A DIGITAL SIGNATURE AND DATE. PRINTED COPIES OF THIS DOCUMENT ARE NOT CONSIDERED SIGNED AND SEALED AND ALL SIGNATURES MUST BE VERIFIED ON ANY ELECTRONIC COPIES.

REVISIONS

COMM. NO.
 19-021

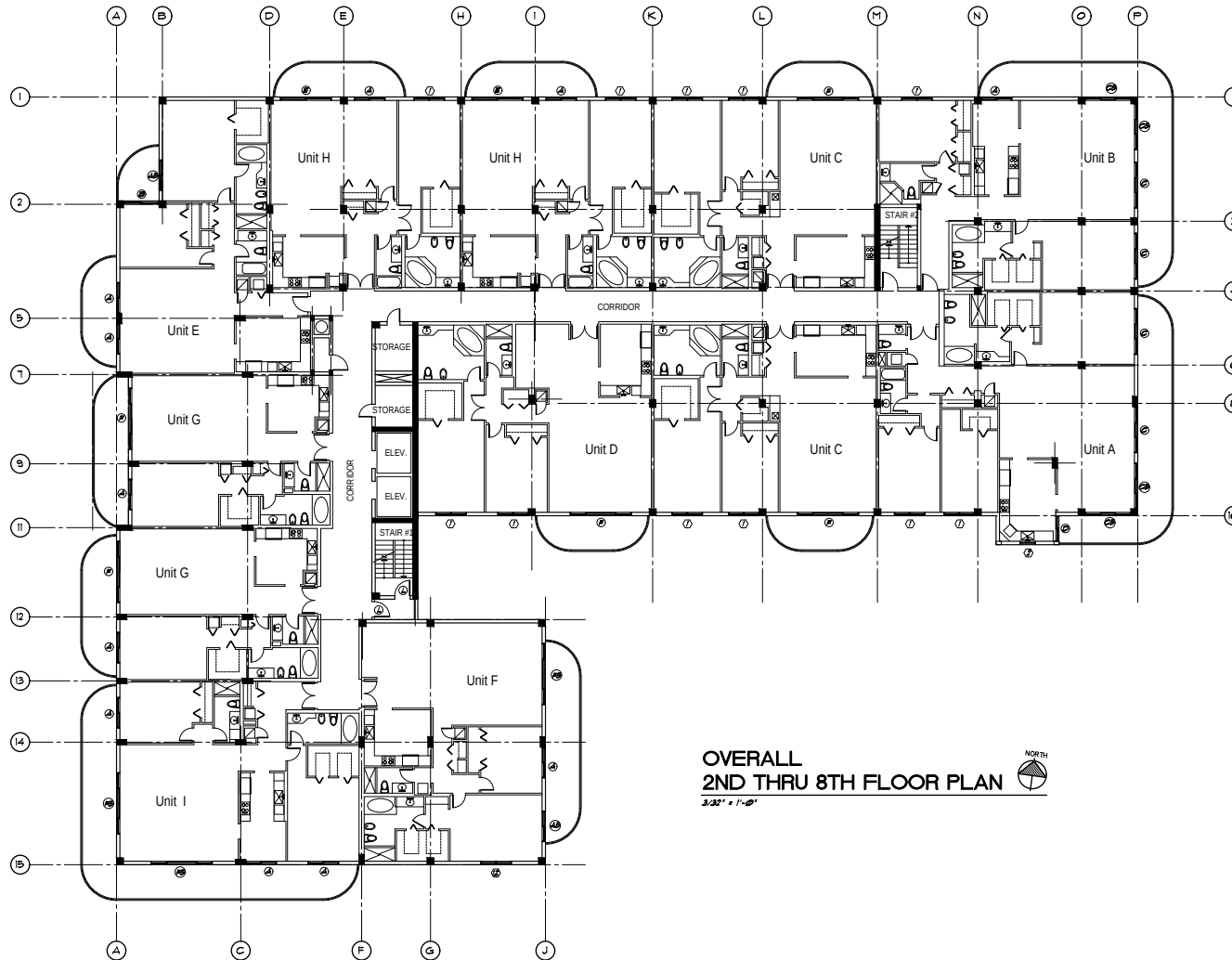
DATE
 5 APRIL 2021

CHAMPLAIN TOWERS SOUTH REPAIR & ALTERATION
 8777 COLLINGS AVE.
 SUDBOR FLORIDA

OVERALL FIRST FLOOR RAMP, WINDOW, 4 DOOR PLAN

SHEET
 A-1
 OF 10

LAST DATE PRINTED: 6-8-20 (RSH/ST) / 4-5-21 (RSD/PAD/SG)



OVERALL
2ND THRU 8TH FLOOR PLAN
3/31' x 1'-0"



SCOTT D. DYER
ARCHITECT, P.A.

AA 001929
AR 001501
6671 CONCH COURT
BOYNTON BEACH, FLORIDA
33437
(561) 596-7503

THIS DRAWING, AS AN INSTRUMENT OF SERVICE IS THE PROPERTY OF THE ARCHITECT AND IS NOT TO BE USED ON OTHER WORK, REPRODUCED IN WHOLE OR IN PART, WITHOUT THE ARCHITECT'S EXPRESS WRITTEN CONSENT.
TO THE BEST OF MY KNOWLEDGE, THE DRAWINGS AND SPECIFICATIONS SUBMITTED HEREWITH, COMPLY WITH EXISTING INTERPRETATIONS AND PROVISIONS OF THE APPLICABLE BUILDING CODES IN EFFECT AT THE DATE SHOWN BELOW. NO WARRANTY, EXPRESS OR IMPLIED IS HEREBY GIVEN.

COPYRIGHT © 2018
SCOTT D. DYER ARCHITECT, P.A.
ALL RIGHTS RESERVED

SCOTT D. DYER AR-001501

THIS DOCUMENT HAS BEEN DIGITALLY SIGNED AND SEALED BY SCOTT D. DYER ARCHITECT, P.A. USING A DIGITAL SIGNATURE AND DATE. PRINTED COPIES OF THIS DOCUMENT ARE NOT CONSIDERED SIGNED AND SEALED AND ALL SIGNATURES MUST BE VERIFIED ON ANY ELECTRONIC COPIES.

REVISIONS

COMM. NO.
19-021

DATE
5 APRIL 2021

CHAMPLAIN
TOWERS SOUTH
REPAIR &
ALTERATION

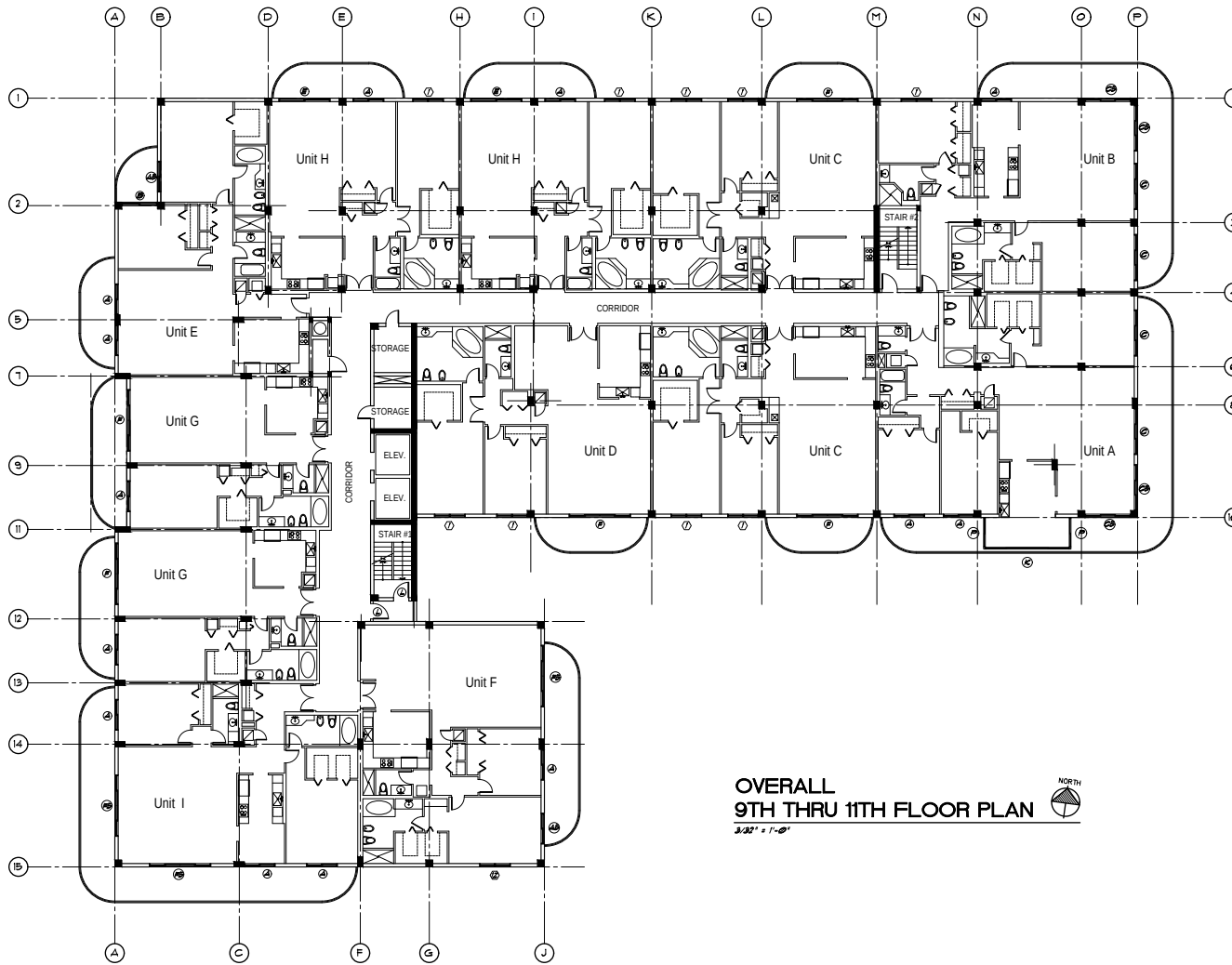
8777 COLLINS AVE.

SUNBORN
FLORIDA

OVERALL 2ND THRU 8TH
FLOOR WINDOW, 4 DOOR
PLAN

SHEET
A-2
OF 10

LAST DATE PRINTED: 6-8-20 (888) / 4-5-21 (888 PACKAGE)



**OVERALL
9TH THRU 11TH FLOOR PLAN**
3/22' = 1'-0"



**SCOTT D. DYER
ARCHITECT, P.A.**

AA 0001929
AR 0011501
6671 CONCH COURT
BOYNTON BEACH, FLORIDA
33437
(561) 596-7503

THIS DRAWING, AS AN INSTRUMENT OF SERVICE, IS THE PROPERTY OF THE ARCHITECT AND IS NOT TO BE USED ON OTHER WORK, REPRODUCED IN WHOLE OR IN PART, WITHOUT THE ARCHITECT'S EXPRESS WRITTEN CONSENT.
TO THE BEST OF MY KNOWLEDGE, THE DRAWING AND SPECIFICATIONS SUBMITTED HEREWITH, COMPLY WITH EXISTING INTERPRETATIONS AND PROVISIONS OF THE APPLICABLE BUILDING CODES IN EFFECT AT THE DATE SHOWN BELOW. NO WARRANTY EXPRESS OR IMPLIED IS HEREBY GIVEN.

COPYRIGHT © 2018
SCOTT D. DYER ARCHITECT, P.A.
ALL RIGHTS RESERVED

SCOTT D. DYER AR-0011501

THIS DOCUMENT HAS BEEN DIGITALLY SIGNED AND SEALED BY SCOTT D. DYER ARCHITECT, P.A. USING A DIGITAL SIGNATURE AND DATE. PRINTED COPIES OF THIS DOCUMENT ARE NOT CONSIDERED SIGNED AND SEALED AND ALL SIGNATURES MUST BE VERIFIED ON ANY ELECTRONIC COPIES.

REVISIONS

COMM. NO.
19-021

DATE
5 APRIL 2021

**CHAMPLAIN
TOWERS SOUTH
REPAIR &
ALTERATION**

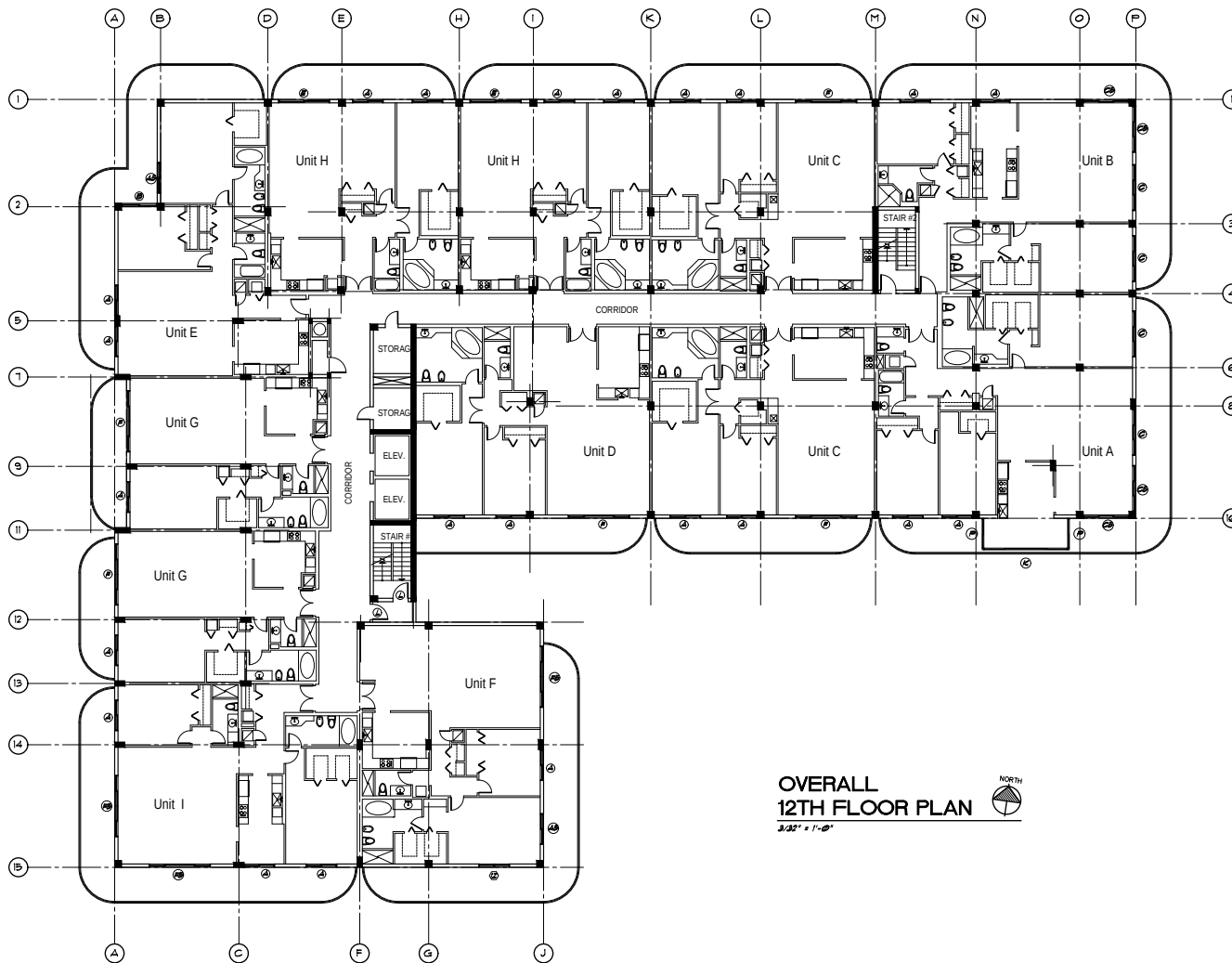
8777 COLLINS AVE.

SUNSHINE
FLORIDA

OVERALL 9TH THRU 11TH
FLOOR WINDOW, & DOOR
PLAN

SHEET
A-3
OF 10

LAST DATE PRINTED: 6-8-20 (888) / 4-5-21 (888 PACKAGE)



**OVERALL
12TH FLOOR PLAN**
3/32" = 1'-0"

SD
SCOTT D. DYER
ARCHITECT, P.A.
AA 0001929
AR 0011501
6671 CONCH COURT
BOYNTON BEACH, FLORIDA
33437
(561) 596-7503

THIS DRAWING, AS AN INSTRUMENT OF SERVICE IS THE PROPERTY OF THE ARCHITECT AND IS NOT TO BE USED ON OTHER WORK, REPRODUCED IN WHOLE OR IN PART, WITHOUT THE ARCHITECT'S EXPRESS WRITTEN CONSENT.
TO THE BEST OF MY KNOWLEDGE, THE DRAWINGS AND SPECIFICATIONS SUBMITTED HEREWITH, COMPLY WITH EXISTING INTERPRETATIONS AND PROVISIONS OF THE APPLICABLE BUILDING CODES IN EFFECT AT THE DATE SHOWN BELOW. NO WARRANTY EXPRESS OR IMPLIED IS HEREBY GIVEN.

COPYRIGHT © 2018
SCOTT D. DYER ARCHITECT, P.A.
ALL RIGHTS RESERVED
SCOTT D. DYER AR-0011501

THIS DOCUMENT HAS BEEN DIGITALLY SIGNED AND SEALED BY SCOTT D. DYER ARCHITECT, P.A. USING A DIGITAL SIGNATURE AND DATE. PRINTED COPIES OF THIS DOCUMENT ARE NOT CONSIDERED SIGNED AND SEALED AND ALL SIGNATURES MUST BE VERIFIED ON ANY ELECTRONIC COPIES.

REVISIONS

COMM. NO.
19-021

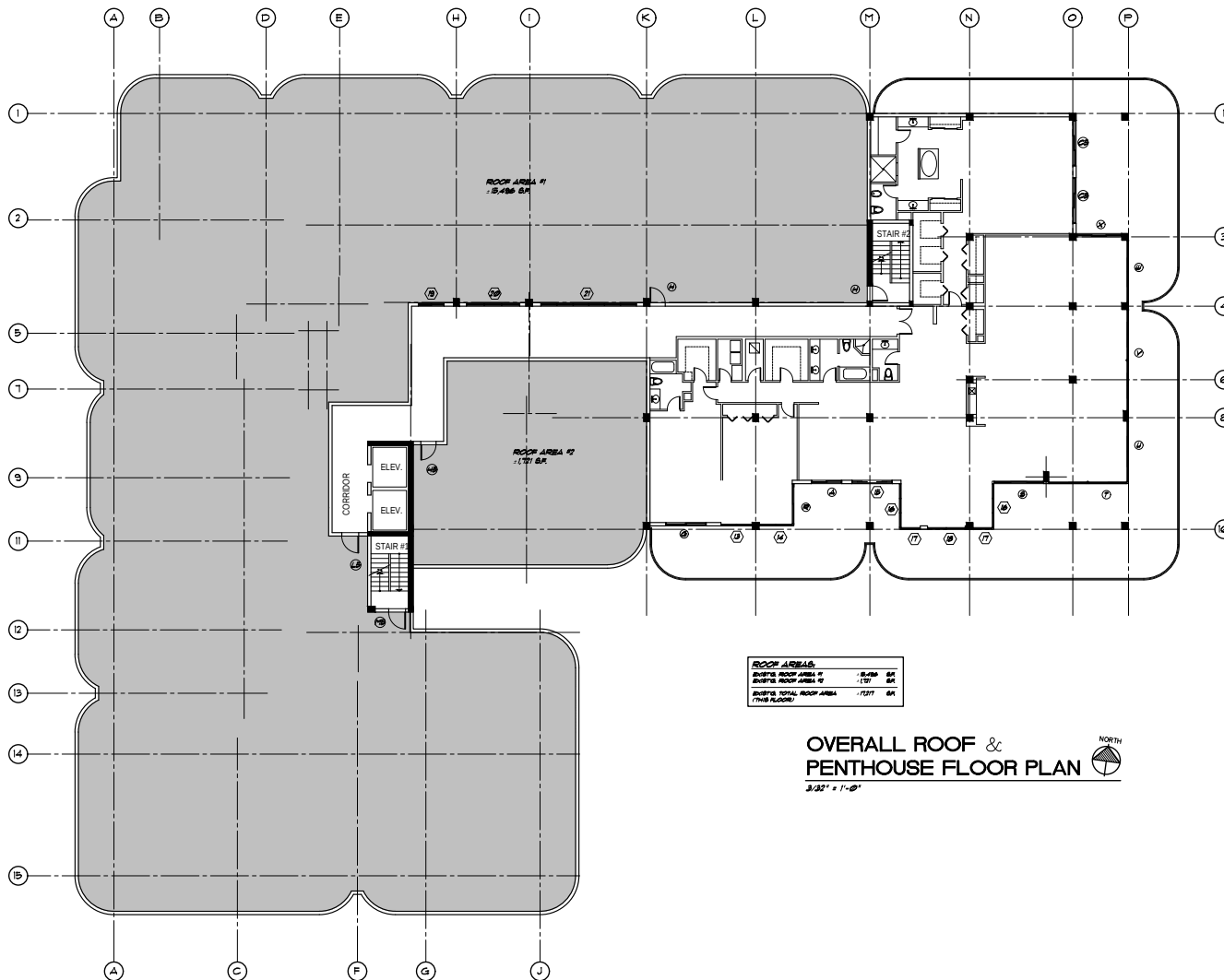
DATE
5 APRIL 2021

**CHAMPLAIN
TOWERS SOUTH
REPAIR &
ALTERATION**
8711 COLLINS AVE.
SUDBORO
FLORIDA

OVERALL 12TH FLOOR
WINDOW, 4 DOOR PLAN

SHEET
A-4
OF 10

LAST DATE PRINTED: 6-8-20 (08:30) / 4-5-21 (08:00)



**OVERALL ROOF &
PENTHOUSE FLOOR PLAN**

3/22" = 1'-0"

NORTH

**SCOTT D. DYER
ARCHITECT, P.A.**

AA 0001929
AR 0011501

6671 CONCH COURT
BOYNTON BEACH, FLORIDA
33437

(561) 596-7503

THIS DRAWING, AS AN INSTRUMENT OF SERVICE IS THE PROPERTY OF THE ARCHITECT AND IS NOT TO BE USED ON OTHER WORK, REPRODUCED IN WHOLE OR IN PART, WITHOUT THE ARCHITECT'S EXPRESS WRITTEN CONSENT.

TO THE BEST OF MY KNOWLEDGE, THE DRAWINGS AND SPECIFICATIONS SUBMITTED HEREWITH, COMPLY WITH EXISTING INTERPRETATIONS AND PROVISIONS OF THE APPLICABLE BUILDING CODES IN EFFECT AT THE DATE SHOWN BELOW. NO WARRANTY EXPRESS OR IMPLIED IS HEREBY GIVEN.

COPYRIGHT © 2018
SCOTT D. DYER ARCHITECT, P.A.
ALL RIGHTS RESERVED

SCOTT D. DYER AR-0011501

THIS DOCUMENT HAS BEEN DIGITALLY SIGNED AND SEALED BY SCOTT D. DYER ARCHITECT, P.A. USING A DIGITAL SIGNATURE AND DATE. PRINTED COPIES OF THIS DOCUMENT ARE NOT CONSIDERED SIGNED AND SEALED AND ALL SIGNATURES MUST BE VERIFIED ON ANY ELECTRONIC COPIES.

REVISIONS

COMM. NO.
19-021

DATE
5 APRIL 2021

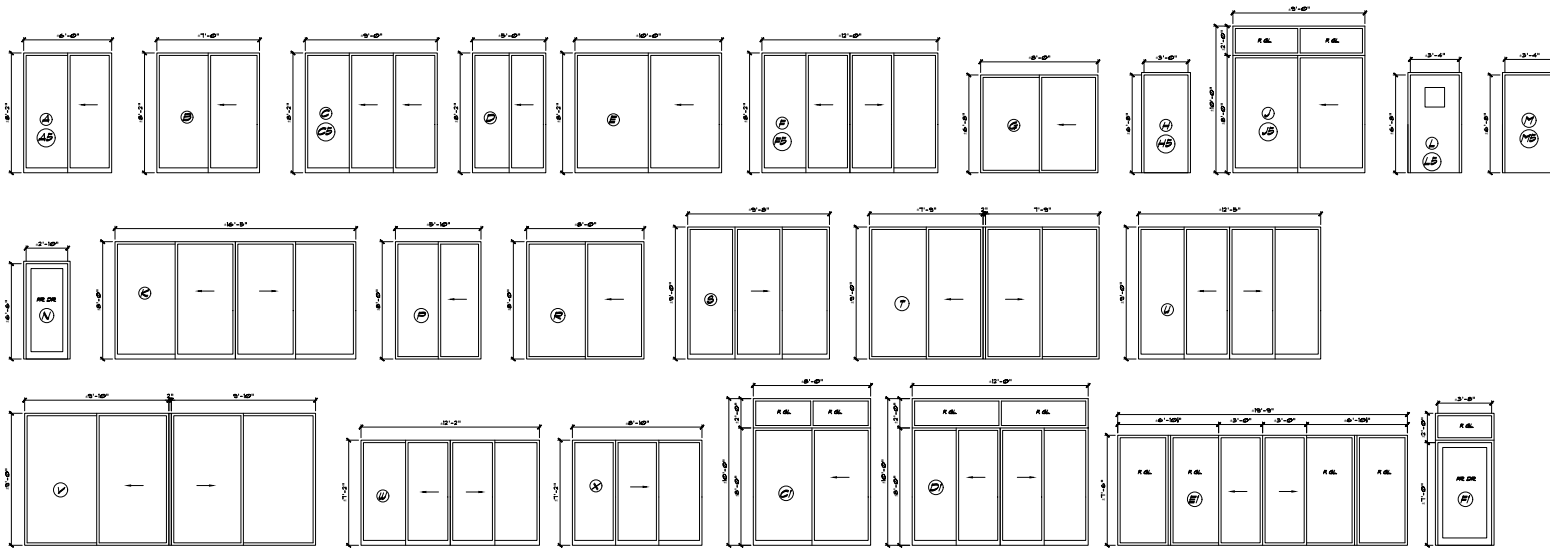
**CHAMPLAIN
TOWERS SOUTH
REPAIR &
ALTERATION**

8711 COLLING AVE.
SUDDER
FLORIDA

**OVERALL ROOF &
PENTHOUSE FLOOR
WINDOW & DOOR PLAN**

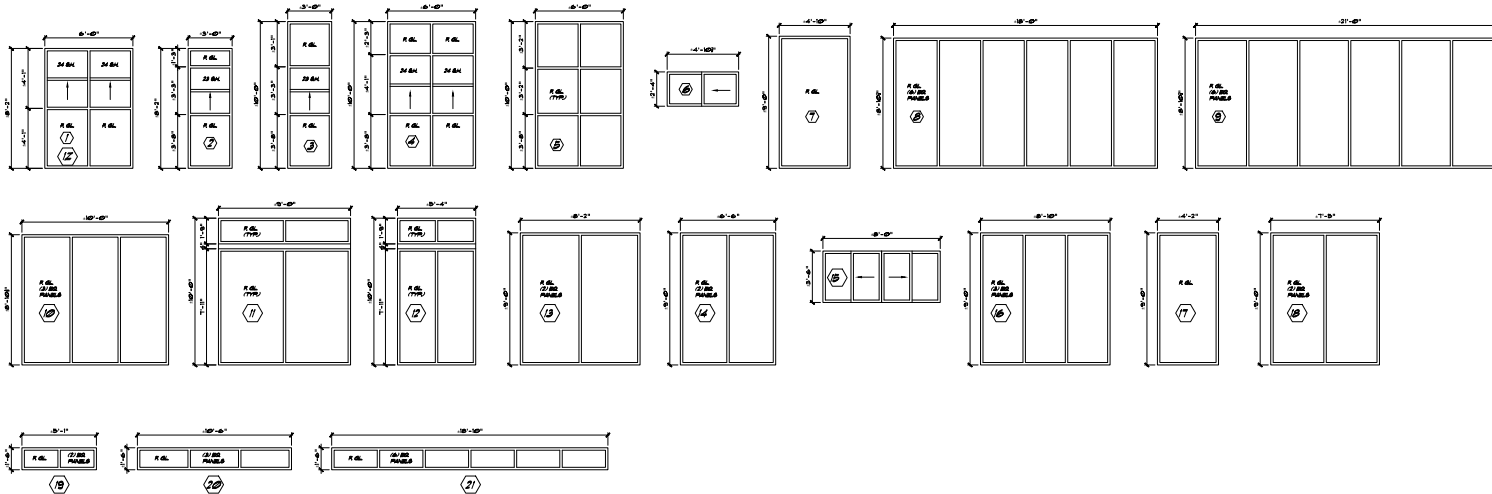
SHEET
A-5
OF 10

LAST DATE PRINTED: 6-8-20 (08:30) / 4-5-21 (08:04:58)



DOOR PROFILES

1/4" = 1'-0"



WINDOW PROFILES

1/4" = 1'-0"

**SCOTT D. DYER
ARCHITECT, P.A.**
AA 0001929
AR 0011001
6671 CONCH COURT
BOYNTON BEACH, FLORIDA
33437
(561) 596-7503

THIS DRAWING, AS AN INSTRUMENT OF SERVICE IS THE PROPERTY OF THE ARCHITECT AND IS NOT TO BE USED ON OTHER WORK, REPRODUCED IN WHOLE OR IN PART, WITHOUT THE ARCHITECT'S EXPRESS WRITTEN CONSENT.
TO THE BEST OF MY KNOWLEDGE, THE DRAWINGS AND SPECIFICATIONS SUBMITTED HEREIN, COMPLY WITH EXISTING INTERPRETATIONS AND PROVISIONS OF THE APPLICABLE BUILDING CODES IN EFFECT AT THE DATE SHOWN BELOW. NO WARRANTY EXPRESS OR IMPLIED IS HEREBY GIVEN.

COPYRIGHT © 2018
SCOTT D. DYER ARCHITECT, P.A.
ALL RIGHTS RESERVED
SCOTT D. DYER AR-0011001

THIS DOCUMENT HAS BEEN DIGITALLY SIGNED AND SEALED BY SCOTT D. DYER ARCHITECT, P.A. USING A DIGITAL SIGNATURE AND DATE. PRINTED COPIES OF THIS DOCUMENT ARE NOT CONSIDERED SIGNED AND SEALED AND ALL SIGNATURES MUST BE VERIFIED ON ANY ELECTRONIC COPIES.

REVISIONS

COMM. NO.
19-021

DATE
5 APRIL 2021

**CHAMPLAIN
TOWERS SOUTH
REPAIR &
ALTERATION**
8777 COLLINS AVE.
SUDBURY
FLORIDA

DOOR & WINDOW
ELEVATION PROFILES

SHEET
A-6
OF 10

LAST DATE PRINTED: 6-8-20 (08:30) / 4-5-21 (09:04:58)



SCOTT D. DYER ARCHITECT, P.A.

AA C001929
AR 0011501
6671 CONCH COURT
BOYNTON BEACH, FLORIDA
33437
(561) 596-7503

THIS DRAWING, AS AN INSTRUMENT OF SERVICE, IS THE PROPERTY OF THE ARCHITECT AND IS NOT TO BE USED ON OTHER WORK, REPRODUCED IN WHOLE OR IN PART, WITHOUT THE ARCHITECT'S EXPRESS WRITTEN CONSENT.

TO THE BEST OF MY KNOWLEDGE, THE DRAWINGS AND SPECIFICATIONS SUBMITTED HEREWITH COMPLY WITH EXISTING INTERPRETATIONS AND PROVISIONS OF THE APPLICABLE BUILDING CODES IN EFFECT AT THE DATE SHOWN BELOW. NO WARRANTY EXPRESS OR IMPLIED IS HEREBY GIVEN.

COPYRIGHT © 2018
SCOTT D. DYER ARCHITECT, P.A.
ALL RIGHTS RESERVED

SCOTT D. DYER AR-0011501

THIS DOCUMENT HAS BEEN DIGITALLY SIGNED AND SEALED BY SCOTT D. DYER ARCHITECT, P.A. USING HIS SIGNATURE AND DATE. PRINTED COPIES OF THIS DOCUMENT ARE NOT CONSIDERED SIGNED AND SEALED AND ALL SIGNATURES MUST BE VERIFIED ON ANY ELECTRONIC COPIES.

REVISIONS

COMM. NO.
19-021

DATE
5 APRIL 2021

CHAMPLAIN TOWERS SOUTH REPAIR & ALTERATION

8777 COLLINS AVE.

SUBURB FLORIDA

DOOR & WINDOW SCHEDULE, DOOR & WINDOW NOTES, DOOR HARDWARE SCHEDULE

SHEET

A-7

OF 10

LAST DATE PRINTED: 6-9-20 (REVISED) / 4-5-21 (REV. PACKAGE)

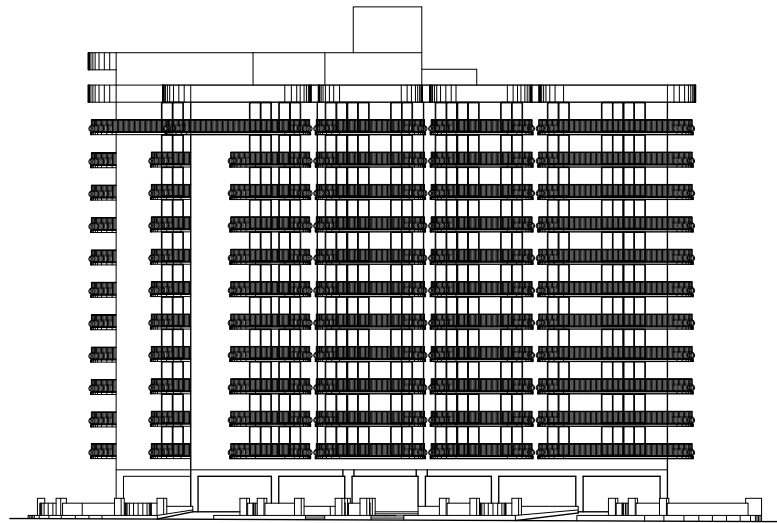
CHAMPLAIN TOWERS SOUTH DOOR & WINDOW SCHEDULE						ULTIMATE (LRF) WIND PRESSURE (PSF)		ALLOWABLE (ASD) WIND PRESSURE (PSF)		WINDOW GROUP
FLOOR (S)	UNIT / ROOM	DOOR	WINDOW	POSITIVE	NEGATIVE	POSITIVE	NEGATIVE			
1	CTM	(C)	(C)	107.8	107.8	64.7	64.7			
1	MANAGEMENT OFFICE	(C)	(C)	107.8	107.8	64.7	64.7			
1	KITCHEN / RECREATION ROOM	(C)	(A)	107.8	107.8	64.7	64.7			
1	FRONT DESK	(C)	(A)	107.8	107.8	64.7	64.7			
1	LOBBY / ENTRY	(H)	(7)	107.8	107.8	64.7	64.7	GROUP 'W'		
1	LOBBY / SITTING AREA	(H)	(7)	107.8	107.8	64.7	64.7	GROUP 'W'		
			(8)	107.8	107.8	64.7	64.7			
			(9)	107.8	107.8	64.7	64.7			
			(10)	107.8	107.8	64.7	64.7			
1	STAIR	(H)	(H)	107.8	107.8	64.7	64.7	GROUP 'C'		
1	CORRIDOR	(H)	(H)	107.8	107.8	64.7	64.7	GROUP 'M'		
1	UNIT 'W'	(U)	(U)	107.8	107.8	64.7	64.7			
		(M)	(M)	107.8	107.8	64.7	64.7			
			(A)	107.8	107.8	64.7	64.7			
			(B)	107.8	107.8	64.7	64.7			
			(C)	107.8	107.8	64.7	64.7			
1	UNIT 'C'	(U)	(U)	107.8	107.8	64.7	64.7			
1	UNIT 'C'	(U)	(A)	107.8	107.8	64.7	64.7			
2 THRU 12	CORRIDORS / STAIRS	(L)	(L)	107.8	107.8	64.7	64.7	GROUP 'D'		
2 THRU 8	UNIT 'A'	(C)	(C)	107.8	107.8	64.7	64.7			
		(B)	(B)	107.8	107.8	64.7	64.7			
		(E)	(E)	107.8	107.8	64.7	64.7			
			(1)	107.8	107.8	64.7	64.7			
			(2)	107.8	107.8	64.7	64.7			
2 THRU 11	UNIT 'W'	(C)	(C)	107.8	107.8	64.7	64.7			
		(A)	(A)	107.8	107.8	64.7	64.7			
		(B)	(B)	107.8	107.8	64.7	64.7			
		(E)	(E)	107.8	107.8	64.7	64.7			
2 THRU 11	UNIT 'C' (TWO UNITS)	(U)	(1)	107.8	107.8	64.7	64.7			
2 THRU 11	UNIT 'C'	(U)	(1)	107.8	107.8	64.7	64.7			
2 THRU 12	UNIT 'W'	(C)	(1)	107.8	107.8	64.7	64.7			
		(A)	(A)	107.8	107.8	64.7	64.7			
		(B)	(B)	107.8	107.8	64.7	64.7			
		(E)	(E)	107.8	107.8	64.7	64.7			
2 THRU 12	UNIT 'C'	(C)	(1)	107.8	107.8	64.7	64.7			
		(A)	(A)	107.8	107.8	64.7	64.7			
		(B)	(B)	107.8	107.8	64.7	64.7			
		(E)	(E)	107.8	107.8	64.7	64.7			
2 THRU 12	UNIT 'W'	(C)	(1)	107.8	107.8	64.7	64.7			
		(A)	(A)	107.8	107.8	64.7	64.7			
		(B)	(B)	107.8	107.8	64.7	64.7			
		(E)	(E)	107.8	107.8	64.7	64.7			
2 THRU 12	UNIT 'C'	(C)	(1)	107.8	107.8	64.7	64.7			
		(A)	(A)	107.8	107.8	64.7	64.7			
		(B)	(B)	107.8	107.8	64.7	64.7			
		(E)	(E)	107.8	107.8	64.7	64.7			
2 THRU 12	UNIT 'W'	(C)	(1)	107.8	107.8	64.7	64.7			
		(A)	(A)	107.8	107.8	64.7	64.7			
		(B)	(B)	107.8	107.8	64.7	64.7			
		(E)	(E)	107.8	107.8	64.7	64.7			
2 THRU 12	UNIT 'C'	(C)	(1)	107.8	107.8	64.7	64.7			
		(A)	(A)	107.8	107.8	64.7	64.7			
		(B)	(B)	107.8	107.8	64.7	64.7			
		(E)	(E)	107.8	107.8	64.7	64.7			
4 THRU 12	UNIT 'A'	(C)	(C)	107.8	107.8	64.7	64.7			
		(B)	(B)	107.8	107.8	64.7	64.7			
		(E)	(E)	107.8	107.8	64.7	64.7			
12	UNIT 'W'	(C)	(C)	107.8	107.8	64.7	64.7			
		(B)	(B)	107.8	107.8	64.7	64.7			
		(E)	(E)	107.8	107.8	64.7	64.7			
12	UNIT 'C'	(C)	(C)	107.8	107.8	64.7	64.7			
		(B)	(B)	107.8	107.8	64.7	64.7			
		(E)	(E)	107.8	107.8	64.7	64.7			
12	UNIT 'C'	(C)	(C)	107.8	107.8	64.7	64.7			
		(B)	(B)	107.8	107.8	64.7	64.7			
		(E)	(E)	107.8	107.8	64.7	64.7			
12	UNIT 'W'	(C)	(C)	107.8	107.8	64.7	64.7			
		(B)	(B)	107.8	107.8	64.7	64.7			
		(E)	(E)	107.8	107.8	64.7	64.7			
		(H)	(H)	107.8	107.8	64.7	64.7	GROUP 'E'		
		(A)	(A)	107.8	107.8	64.7	64.7	GROUP 'C'		
		(B)	(B)	107.8	107.8	64.7	64.7	GROUP 'W'		
		(E)	(E)	107.8	107.8	64.7	64.7	GROUP 'W'		
		(H)	(H)	107.8	107.8	64.7	64.7	GROUP 'W'		
		(B)	(B)	107.8	107.8	64.7	64.7	GROUP 'W'		
		(E)	(E)	107.8	107.8	64.7	64.7	GROUP 'W'		

DOOR NOTES:
1. ALL DOORS SHALL COMPLY WITH SWD CODES, GATES AND TURNBUCKLES, & PERIODS OF CHAPTER 1 SLIP RESISTANCE, LATCHES AND ALARM DEVICES AND ADA MANEUVERABLE ACCESSIBILITY CODES.
2. DOORS WITH AN ACCESS TO AN EXIT AND EXIT DOORS SHALL BE OPENED FROM THE INSIDE WITHOUT THE USE OF A KEY OR ANY SPECIAL KNOWLEDGE OR EFFORT AT ALL TIMES WHEN THE PORTION OF THE BUILDING AREA IS OCCUPIED.
3. A NOTICE REQUIRING TO FULLY OPEN ANY DOOR MANUALLY IS A MEANS OF EGRESS SHALL NOT BE USED IF LBS (25 LBS) TO REVERSE THE LATCH OR LBS (25 LBS) TO SET THE DOOR IN MOTION, AND 5 LBS (47 LBS) TO OPEN THE DOOR TO THE FULL BRICK POINT.
4. A DOOR DESIGNED TO NORMALLY BE KEPT CLOSED IN A MEANS OF EGRESS SHALL BE A FREE-SWINGING DOOR AND SHALL NOT BE SECURED IN THE OPEN POSITION AT ANY TIME.
5. CLOSURES TO BE LCA (60-90) PER NFPA (NFPA) RELATED.
6. GENERAL CONTRACTOR TO COORDINATE ALL LOCKERS WITH OWNER.

NOTE:
SIC TO PROVIDE SPINNS SCALE & THIS OF FIRE DEPT. REVIEW IN FIELD.

WINDOW NOTES:
1. GLASS & GLAZING SHALL COMPLY WITH 2016 IBC CHAPTER 24
2. ALL ALUMINUM FINISHES TO BE ANODIZED AND BRUSHED PAINT.
3. GLASS COLOUR TO BE INSULATED.
4. ALL GLASS TO BE IMPACT RESISTANT.

HARDWARE GROUP:			
GROUP 'A' STOREFRONT (IMPACT) HOLLOW METAL FRAME ADA THRESHOLD CLOSER HINGES (PER NOA)	GROUP 'E' HOLLOW METAL (IMPACT) HOLLOW METAL FRAME 'B' LABEL (1-1/2 HOUR RATED) VOID WIRE GLASS VISION PANEL Panic HARDWARE ADA THRESHOLD HINGES (PER NOA)	GROUP 'G' HOLLOW METAL (IMPACT) HOLLOW METAL FRAME VOID WIRE GLASS VISION PANEL PASS-THRU LOCKSET ADA THRESHOLD CLOSER HINGES (PER NOA)	GROUP 'I' HOLLOW METAL (IMPACT) HOLLOW METAL FRAME 'B' LABEL (1-1/2 HOUR RATED) VOID WIRE GLASS VISION PANEL PASS-THRU LOCKSET ADA THRESHOLD CLOSER HINGES (PER NOA)
GROUP 'K' STOREFRONT (IMPACT) AUTOMATIC SLIDING DOOR ADA THRESHOLD	GROUP 'M' HOLLOW METAL (IMPACT) HOLLOW METAL FRAME 'B' LABEL (1-1/2 HOUR RATED) Panic HARDWARE ADA THRESHOLD HINGES (PER NOA)	GROUP 'N' HOLLOW METAL (IMPACT) HOLLOW METAL FRAME VOID WIRE GLASS VISION PANEL PASS-THRU LOCKSET ADA THRESHOLD HINGES (PER NOA)	GROUP 'O' HOLLOW METAL (IMPACT) HOLLOW METAL FRAME 'B' LABEL (1-1/2 HOUR RATED) VOID WIRE GLASS VISION PANEL PASS-THRU LOCKSET ADA THRESHOLD HINGES (PER NOA)



WEST ELEVATION

1/8" = 1'-0"


- -01'-0" ELEVATE BLEV. ROOF
- -02'-0" ELEVATE ROOF HALL
- -03'-0" ELEVATE PARADEY HALL
- -04'-0" ELEVATE ROOF
- -05'-0" ELEVATE 8TH FLOOR
- -06'-0" ELEVATE 8TH FLOOR
- -07'-0" ELEVATE 8TH FLOOR
- -08'-0" ELEVATE 8TH FLOOR
- -09'-0" ELEVATE 8TH FLOOR
- -10'-0" ELEVATE 8TH FLOOR
- -11'-0" ELEVATE 8TH FLOOR
- -12'-0" ELEVATE 8TH FLOOR
- -13'-0" ELEVATE 8TH FLOOR
- -14'-0" ELEVATE 8TH FLOOR
- -15'-0" ELEVATE 8TH FLOOR
- -16'-0" ELEVATE 8TH FLOOR
- -17'-0" ELEVATE 8TH FLOOR
- -18'-0" ELEVATE 8TH FLOOR
- -19'-0" ELEVATE 8TH FLOOR
- -20'-0" ELEVATE 8TH FLOOR
- -21'-0" ELEVATE 8TH FLOOR
- -22'-0" ELEVATE 8TH FLOOR
- -23'-0" ELEVATE 8TH FLOOR
- -24'-0" ELEVATE 8TH FLOOR
- -25'-0" ELEVATE 8TH FLOOR
- -26'-0" ELEVATE 8TH FLOOR
- -27'-0" ELEVATE 8TH FLOOR
- -28'-0" ELEVATE 8TH FLOOR
- -29'-0" ELEVATE 8TH FLOOR
- -30'-0" ELEVATE 8TH FLOOR
- -31'-0" ELEVATE 8TH FLOOR
- -32'-0" ELEVATE 8TH FLOOR
- -33'-0" ELEVATE 8TH FLOOR
- -34'-0" ELEVATE 8TH FLOOR
- -35'-0" ELEVATE 8TH FLOOR
- -36'-0" ELEVATE 8TH FLOOR
- -37'-0" ELEVATE 8TH FLOOR
- -38'-0" ELEVATE 8TH FLOOR
- -39'-0" ELEVATE 8TH FLOOR
- -40'-0" ELEVATE 8TH FLOOR
- -41'-0" ELEVATE 8TH FLOOR
- -42'-0" ELEVATE 8TH FLOOR
- -43'-0" ELEVATE 8TH FLOOR
- -44'-0" ELEVATE 8TH FLOOR
- -45'-0" ELEVATE 8TH FLOOR
- -46'-0" ELEVATE 8TH FLOOR
- -47'-0" ELEVATE 8TH FLOOR
- -48'-0" ELEVATE 8TH FLOOR
- -49'-0" ELEVATE 8TH FLOOR
- -50'-0" ELEVATE 8TH FLOOR
- -51'-0" ELEVATE 8TH FLOOR
- -52'-0" ELEVATE 8TH FLOOR
- -53'-0" ELEVATE 8TH FLOOR
- -54'-0" ELEVATE 8TH FLOOR
- -55'-0" ELEVATE 8TH FLOOR
- -56'-0" ELEVATE 8TH FLOOR
- -57'-0" ELEVATE 8TH FLOOR
- -58'-0" ELEVATE 8TH FLOOR
- -59'-0" ELEVATE 8TH FLOOR
- -60'-0" ELEVATE 8TH FLOOR
- -61'-0" ELEVATE 8TH FLOOR
- -62'-0" ELEVATE 8TH FLOOR
- -63'-0" ELEVATE 8TH FLOOR
- -64'-0" ELEVATE 8TH FLOOR
- -65'-0" ELEVATE 8TH FLOOR
- -66'-0" ELEVATE 8TH FLOOR
- -67'-0" ELEVATE 8TH FLOOR
- -68'-0" ELEVATE 8TH FLOOR
- -69'-0" ELEVATE 8TH FLOOR
- -70'-0" ELEVATE 8TH FLOOR
- -71'-0" ELEVATE 8TH FLOOR
- -72'-0" ELEVATE 8TH FLOOR
- -73'-0" ELEVATE 8TH FLOOR
- -74'-0" ELEVATE 8TH FLOOR
- -75'-0" ELEVATE 8TH FLOOR
- -76'-0" ELEVATE 8TH FLOOR
- -77'-0" ELEVATE 8TH FLOOR
- -78'-0" ELEVATE 8TH FLOOR
- -79'-0" ELEVATE 8TH FLOOR
- -80'-0" ELEVATE 8TH FLOOR
- -81'-0" ELEVATE 8TH FLOOR
- -82'-0" ELEVATE 8TH FLOOR
- -83'-0" ELEVATE 8TH FLOOR
- -84'-0" ELEVATE 8TH FLOOR
- -85'-0" ELEVATE 8TH FLOOR
- -86'-0" ELEVATE 8TH FLOOR
- -87'-0" ELEVATE 8TH FLOOR
- -88'-0" ELEVATE 8TH FLOOR
- -89'-0" ELEVATE 8TH FLOOR
- -90'-0" ELEVATE 8TH FLOOR
- -91'-0" ELEVATE 8TH FLOOR
- -92'-0" ELEVATE 8TH FLOOR
- -93'-0" ELEVATE 8TH FLOOR
- -94'-0" ELEVATE 8TH FLOOR
- -95'-0" ELEVATE 8TH FLOOR
- -96'-0" ELEVATE 8TH FLOOR
- -97'-0" ELEVATE 8TH FLOOR
- -98'-0" ELEVATE 8TH FLOOR
- -99'-0" ELEVATE 8TH FLOOR
- -100'-0" ELEVATE 8TH FLOOR



NORTH ELEVATION

1/8" = 1'-0"

- -01'-0" ELEVATE BLEV. ROOF
- -02'-0" ELEVATE ROOF HALL
- -03'-0" ELEVATE PARADEY HALL
- -04'-0" ELEVATE ROOF
- -05'-0" ELEVATE 8TH FLOOR
- -06'-0" ELEVATE 8TH FLOOR
- -07'-0" ELEVATE 8TH FLOOR
- -08'-0" ELEVATE 8TH FLOOR
- -09'-0" ELEVATE 8TH FLOOR
- -10'-0" ELEVATE 8TH FLOOR
- -11'-0" ELEVATE 8TH FLOOR
- -12'-0" ELEVATE 8TH FLOOR
- -13'-0" ELEVATE 8TH FLOOR
- -14'-0" ELEVATE 8TH FLOOR
- -15'-0" ELEVATE 8TH FLOOR
- -16'-0" ELEVATE 8TH FLOOR
- -17'-0" ELEVATE 8TH FLOOR
- -18'-0" ELEVATE 8TH FLOOR
- -19'-0" ELEVATE 8TH FLOOR
- -20'-0" ELEVATE 8TH FLOOR
- -21'-0" ELEVATE 8TH FLOOR
- -22'-0" ELEVATE 8TH FLOOR
- -23'-0" ELEVATE 8TH FLOOR
- -24'-0" ELEVATE 8TH FLOOR
- -25'-0" ELEVATE 8TH FLOOR
- -26'-0" ELEVATE 8TH FLOOR
- -27'-0" ELEVATE 8TH FLOOR
- -28'-0" ELEVATE 8TH FLOOR
- -29'-0" ELEVATE 8TH FLOOR
- -30'-0" ELEVATE 8TH FLOOR
- -31'-0" ELEVATE 8TH FLOOR
- -32'-0" ELEVATE 8TH FLOOR
- -33'-0" ELEVATE 8TH FLOOR
- -34'-0" ELEVATE 8TH FLOOR
- -35'-0" ELEVATE 8TH FLOOR
- -36'-0" ELEVATE 8TH FLOOR
- -37'-0" ELEVATE 8TH FLOOR
- -38'-0" ELEVATE 8TH FLOOR
- -39'-0" ELEVATE 8TH FLOOR
- -40'-0" ELEVATE 8TH FLOOR
- -41'-0" ELEVATE 8TH FLOOR
- -42'-0" ELEVATE 8TH FLOOR
- -43'-0" ELEVATE 8TH FLOOR
- -44'-0" ELEVATE 8TH FLOOR
- -45'-0" ELEVATE 8TH FLOOR
- -46'-0" ELEVATE 8TH FLOOR
- -47'-0" ELEVATE 8TH FLOOR
- -48'-0" ELEVATE 8TH FLOOR
- -49'-0" ELEVATE 8TH FLOOR
- -50'-0" ELEVATE 8TH FLOOR
- -51'-0" ELEVATE 8TH FLOOR
- -52'-0" ELEVATE 8TH FLOOR
- -53'-0" ELEVATE 8TH FLOOR
- -54'-0" ELEVATE 8TH FLOOR
- -55'-0" ELEVATE 8TH FLOOR
- -56'-0" ELEVATE 8TH FLOOR
- -57'-0" ELEVATE 8TH FLOOR
- -58'-0" ELEVATE 8TH FLOOR
- -59'-0" ELEVATE 8TH FLOOR
- -60'-0" ELEVATE 8TH FLOOR
- -61'-0" ELEVATE 8TH FLOOR
- -62'-0" ELEVATE 8TH FLOOR
- -63'-0" ELEVATE 8TH FLOOR
- -64'-0" ELEVATE 8TH FLOOR
- -65'-0" ELEVATE 8TH FLOOR
- -66'-0" ELEVATE 8TH FLOOR
- -67'-0" ELEVATE 8TH FLOOR
- -68'-0" ELEVATE 8TH FLOOR
- -69'-0" ELEVATE 8TH FLOOR
- -70'-0" ELEVATE 8TH FLOOR
- -71'-0" ELEVATE 8TH FLOOR
- -72'-0" ELEVATE 8TH FLOOR
- -73'-0" ELEVATE 8TH FLOOR
- -74'-0" ELEVATE 8TH FLOOR
- -75'-0" ELEVATE 8TH FLOOR
- -76'-0" ELEVATE 8TH FLOOR
- -77'-0" ELEVATE 8TH FLOOR
- -78'-0" ELEVATE 8TH FLOOR
- -79'-0" ELEVATE 8TH FLOOR
- -80'-0" ELEVATE 8TH FLOOR
- -81'-0" ELEVATE 8TH FLOOR
- -82'-0" ELEVATE 8TH FLOOR
- -83'-0" ELEVATE 8TH FLOOR
- -84'-0" ELEVATE 8TH FLOOR
- -85'-0" ELEVATE 8TH FLOOR
- -86'-0" ELEVATE 8TH FLOOR
- -87'-0" ELEVATE 8TH FLOOR
- -88'-0" ELEVATE 8TH FLOOR
- -89'-0" ELEVATE 8TH FLOOR
- -90'-0" ELEVATE 8TH FLOOR
- -91'-0" ELEVATE 8TH FLOOR
- -92'-0" ELEVATE 8TH FLOOR
- -93'-0" ELEVATE 8TH FLOOR
- -94'-0" ELEVATE 8TH FLOOR
- -95'-0" ELEVATE 8TH FLOOR
- -96'-0" ELEVATE 8TH FLOOR
- -97'-0" ELEVATE 8TH FLOOR
- -98'-0" ELEVATE 8TH FLOOR
- -99'-0" ELEVATE 8TH FLOOR
- -100'-0" ELEVATE 8TH FLOOR



SCOTT D. DYER ARCHITECT, P.A.
 AA 0001929
 AR 0011501
 6671 CONCH COURT
 BOYNTON BEACH, FLORIDA
 33437
 (561) 596-7503

THIS DRAWING, AS AN INSTRUMENT OF SERVICE IS THE PROPERTY OF THE ARCHITECT AND IS NOT TO BE USED ON OTHER WORK, REPRODUCED IN WHOLE OR IN PART, WITHOUT THE ARCHITECT'S EXPRESS WRITTEN CONSENT.

TO THE BEST OF MY KNOWLEDGE, THE DRAWINGS AND SPECIFICATIONS SUBMITTED HEREWITH COMPLY WITH EXISTING INTERPRETATIONS AND PROVISIONS OF THE APPLICABLE BUILDING CODES IN EFFECT AT THE DATE SHOWN BELOW. NO WARRANTY EXPRESS OR IMPLIED IS HEREBY GIVEN.

© COPYRIGHT © 2018
 SCOTT D. DYER ARCHITECT, P.A.
 ALL RIGHTS RESERVED

SCOTT D. DYER AR-0011501

THIS DOCUMENT HAS BEEN DIGITALLY SIGNED AND SEALED BY SCOTT D. DYER ARCHITECT, P.A. USING A DIGITAL SIGNATURE AND DATE. PRINTED COPIES OF THIS DOCUMENT ARE NOT CONSIDERED SIGNED AND SEALED AND ALL SIGNATURES MUST BE VERIFIED ON ANY ELECTRONIC COPIES.

REVISIONS

COMM. NO.
 19-021

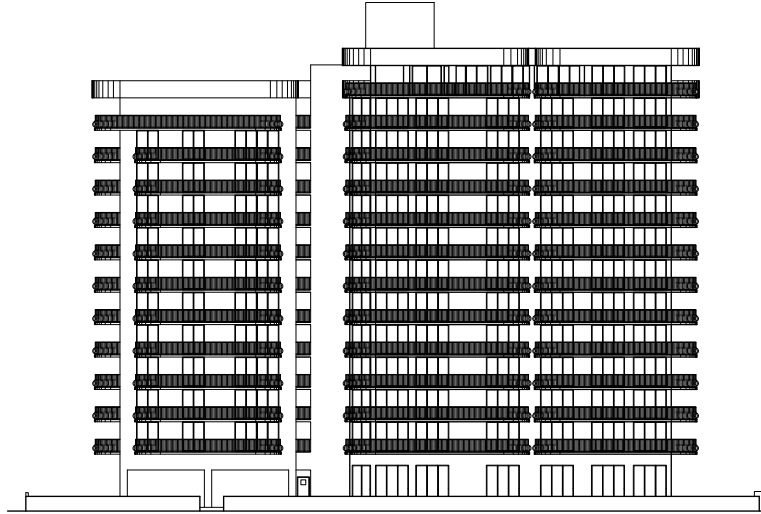
DATE
 5 APRIL 2021

CHAMPLAIN TOWERS SOUTH REPAIR & ALTERATION
 8777 COLLING AVE.
 SUDBURY FLORIDA

WEST 4 NORTH BUILDING ELEVATIONS

SHEET
A-8
 OF 10

LAST DATE PRINTED: 6-8-20 (08:30) / 4-5-21 (09:40:00)



- 128'-0" ELEVATION BLEVEE ROOF
- 127'-0" ELEVATION ROOF WALL
- 126'-2" ELEVATION PARAPET WALL
- 124'-2" ELEVATION ROOF
- 118'-0" ELEVATION 8TH FLOOR
- 108'-0" ELEVATION 7TH FLOOR
- 97'-0" ELEVATION 6TH FLOOR
- 86'-0" ELEVATION 5TH FLOOR
- 75'-0" ELEVATION 4TH FLOOR
- 64'-0" ELEVATION 3RD FLOOR
- 53'-0" ELEVATION 2ND FLOOR
- 42'-0" ELEVATION 1ST FLOOR
- 31'-0" ELEVATION DRIVE GRAD
- 20'-0" ELEVATION GARAGE
- 9'-2" ELEVATION BALCONY SL
- 0'-0" ELEVATION AREA LT.

EAST ELEVATION
1/16" = 1'-0"



- 128'-0" ELEVATION BLEVEE ROOF
- 127'-0" ELEVATION ROOF WALL
- 126'-2" ELEVATION PARAPET WALL
- 124'-2" ELEVATION ROOF
- 118'-0" ELEVATION 8TH FLOOR
- 108'-0" ELEVATION 7TH FLOOR
- 97'-0" ELEVATION 6TH FLOOR
- 86'-0" ELEVATION 5TH FLOOR
- 75'-0" ELEVATION 4TH FLOOR
- 64'-0" ELEVATION 3RD FLOOR
- 53'-0" ELEVATION 2ND FLOOR
- 42'-0" ELEVATION 1ST FLOOR
- 31'-0" ELEVATION DRIVE GRAD
- 20'-0" ELEVATION GARAGE
- 9'-2" ELEVATION BALCONY SL
- 0'-0" ELEVATION AREA LT.

SOUTH ELEVATION
1/16" = 1'-0"

SD

SCOTT D. DYER
ARCHITECT, P.A.

AA 0001929
AR 0011501

6671 CONCH COURT
BOYNTON BEACH, FLORIDA
33437

(561) 596-7503

THIS DRAWING, AS AN INSTRUMENT OF SERVICE IS THE PROPERTY OF THE ARCHITECT AND IS NOT TO BE USED OR OTHER WORK, REPRODUCED IN WHOLE OR IN PART, WITHOUT THE ARCHITECT'S EXPRESS WRITTEN CONSENT.

TO THE BEST OF MY KNOWLEDGE, THE DRAWINGS AND SPECIFICATIONS SUBMITTED HEREWITH COMPLY WITH EXISTING INTERPRETATIONS AND PROVISIONS OF THE APPLICABLE BUILDING CODES IN EFFECT AT THE DATE SHOWN BELOW. NO WARRANTY EXPRESS OR IMPLIED IS HEREBY GIVEN.

COPYRIGHT © 2018
SCOTT D. DYER ARCHITECT, P.A.
ALL RIGHTS RESERVED

SCOTT D. DYER AR-0011501

THIS DOCUMENT HAS BEEN DIGITALLY SIGNED AND SEALED BY SCOTT D. DYER ARCHITECT, P.A. USING A DIGITAL SIGNATURE AND DATE. PRINTED COPIES OF THIS DOCUMENT ARE NOT CONSIDERED SIGNED AND SEALED AND ALL SIGNATURES MUST BE VERIFIED ON ANY ELECTRONIC COPIES.

REVISIONS

COMM. NO.
19-021

DATE
5 APRIL 2021

CHAMPLAIN TOWERS SOUTH REPAIR & ALTERATION

8717 COLLING AVE
SURFSIDE FLORIDA

EAST & SOUTH BUILDING ELEVATIONS

SHEET
A-9
OF 10

LAST DATE PRINTED: 6-8-20 (R831) / 4-5-21 (R83 PACKAGE)



EAST ELEVATION



WEST ELEVATION



SOUTH ELEVATION

Champlain Towers South

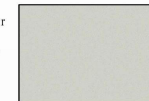
8777 Collins Ave. SURFSIDE , FL.

Preliminary COLOR CHART

BENJAMIN MOORE
Classic Colors
Color Preview

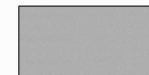
Color -- A -Main Bldg. Tower Color

BM --- OC-28 Collingwood Color Preview



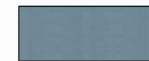
Color -- B -Secondary, Accent Bldg Color
-Partial Accent Tower Base

BM --- 1467 Baltic Gray Classic Colors



Color -- C -Inner Covers Accent Color
-Partial South Side Tower Color

BM -1649 Polaris Blue Classic Colors



SD
ARCHITECT, P.A.

LSYD
ARTS

10-20-2020

SD

SCOTT D. DYER
ARCHITECT, P.A.

AA 0001929
AR 0011501
6671 CONCH COURT
BOYNTON BEACH, FLORIDA
33437
(561) 596-7503

THIS DRAWING, AS AN INSTRUMENT OF SERVICE IS THE PROPERTY OF THE ARCHITECT AND IS NOT TO BE USED ON OTHER WORK, REPRODUCED IN WHOLE OR IN PART, WITHOUT THE ARCHITECT'S EXPRESS WRITTEN CONSENT.

TO THE BEST OF MY KNOWLEDGE, THE DRAWING AND SPECIFICATIONS SUBMITTED HEREWITH, COMPLY WITH EXISTING INTERPRETATIONS AND PROVISIONS OF THE APPLICABLE BUILDING CODES IN EFFECT AT THE DATE SHOWN BELOW. NO WARRANTY EXPRESS OR IMPLIED IS HEREBY GIVEN.

COPYRIGHT © 2018
SCOTT D. DYER ARCHITECT, P.A.
ALL RIGHTS RESERVED

SCOTT D. DYER AR-0011501

THIS DOCUMENT HAS BEEN DIGITALLY SIGNED AND SEALED BY SCOTT D. DYER ARCHITECT, P.A. USING A DIGITAL SIGNATURE AND DATE. PRINTED COPIES OF THIS DOCUMENT ARE NOT CONSIDERED SIGNED AND SEALED AND ALL SIGNATURES MUST BE VERIFIED ON ANY ELECTRONIC COPIES.

REVISIONS

COMM. NO.
19-021

DATE
5 APRIL 2021

**CHAMPLAIN
TOWERS SOUTH
REPAIR &
ALTERATION**

8777 COLLINS AVE.

SURFSIDE
FLORIDA

PRELIMINARY COLOR
CHART & NEW BUILDING
ELEVATIONS

SHEET

A-10

OF 10

LAST DATE PRINTED: 6-8-20 (08:30) / 4-5-21 (08:04:58)

ELECTRICAL NOTES:

1. MATERIALS AND INSTALLATION AS A MINIMUM ARE TO CONFORM WITH THE LATEST EDITION OF THE NATIONAL ELECTRICAL CODE 2017 EDITION (N.E.C.), LOCAL CODES, ORDINANCES, INCLUDING ALL AMENDMENTS TO THE N.E.C. EQUIPMENT WHERE APPLICABLE, WILL BE LISTED WITH THE UNDERWRITER'S LABORATORIES, INC. QUALITY AND WORKMANSHIP ESTABLISHED BY DRAWINGS AND SPECIFICATIONS ARE NOT TO BE REDUCED BY THE ABOVE MENTIONED CODES.
2. BIDDERS ARE TO VISIT THE SITE AND FAMILIARIZE THEMSELVES WITH EXISTING CONDITIONS AND SATISFY THEMSELVES AS TO THE NATURE AND SCOPE OF WORK. THE SUBMISSION OF A BID WILL BE EVIDENCE THAT SUCH AN EXAMINATION HAS BEEN MADE. LATER CLAIMS FOR LABOR, EQUIPMENT OR MATERIALS ENCOUNTERED WHICH COULD HAVE BEEN FORESEEN FROM AN EXAMINATION BEEN MADE, WILL NOT BE ALLOWED.
3. ALL WORK SHALL BE PERFORMED BY A LICENSED ELECTRICAL CONTRACTOR IN A FIRST-CLASS WORKMANLIKE MANNER. THE COMPLETED SYSTEM IS TO BE FULLY OPERABLE AND ACCEPTANCE OF THIS SYSTEM BY THE ENGINEER MUST BE A CONDITION OF THE JOB CONTRACT.
4. ALL WORK TO BE COORDINATED WITH OTHER TRADES TO AVOID INTERFERENCE WITH THE PROGRESS OF CONSTRUCTION.
5. CONTRACTOR TO GUARANTEE ALL MATERIALS AND WORKMANSHIP FREE FROM DEFECTS FOR PERIOD OF NOT LESS THAN ONE (1) YEAR FROM DATE OF ACCEPTANCE.
6. CORRECTION OF ANY DEFECTS TO BE COMPLETED WITHOUT ADDITIONAL CHARGE AND TO INCLUDE RETRACEMENT OR REPAIR OF ANY OTHER PART OF THE INSTALLATION WHICH MAY HAVE BEEN DAMAGED THEREBY.
7. ALL REQUIRED INSURANCE TO BE PROVIDED FOR PROTECTION AGAINST PUBLIC LIABILITY OF PROPERTY DAMAGE FOR THE DURATION OF THE WORK.
8. CONTRACTOR TO PAY FOR ALL PERMITS, FEES INSPECTIONS AND TESTINGS.
9. ELECTRICAL INSTALLATION TO MEET ALL STANDARD REQUIREMENTS OF LOCAL POWER AND TELEPHONE COMPANIES. ELECTRICAL CONTRACTOR SHALL CONTACT LOCAL POWER AND TELEPHONE COMPANIES PRIOR TO START OF CONSTRUCTION.
10. ALL WIRING SHALL BE IN CONDUIT UNLESS OTHERWISE NOTED. MINIMUM WIRE SIZE SHALL BE #14 AWG. EXCLUDING CONTROL WIRING. ALL CONDUCTORS SHALL BE COPPER WITH THIRTY-MINUTE INSULATION. CONDUCTORS #10 AND SMALLER MAY BE SOLID. ALL THOSE #8 AND LARGER TO BE STRANDED.
11. ALL UNDERGROUND RACEWAYS SHALL BE MINIMUM 3/4" SCHEDULE 40 PVC. ALL OTHER RACEWAYS TO COMPLY WITH GOVERNING CODES. WHERE RIGID STEEL IS USED, IT SHALL BE COMPLETELY COATED WITH AN ALUMINUM FLUORIDE-RESISTANT BITUMASTIC PAINT, COPPER NO. 50, AND THREADS SHALL BE COATED WITH ZINC CHROMATE. RIGID STEEL SHALL ALSO BE USED WHEN CONCEALED IS EXPOSED TO EXTERIOR ENVIRONMENT SUCH AS EXTERIOR OF BUILDING OR WHERE IT IS EXPOSED AND SUBJECT TO DAMAGE, INSIDE OF BUILDING.
12. OUTLET BOXES SHALL BE PRESSURIZED STEEL IN DRY LOCATIONS, CAST ALLOY WITH THREADED HUBS IN WET OR DAMP LOCATIONS, AND HE OF SPECIAL CONSTRUCTION FOR OTHER CLASSIFIED AREAS. ALL BOXES SHALL BE RECESSED (FLUSH) IN WALLS OR CEILINGS WHOMEVER POSSIBLE.
13. DISCONNECT SWITCHES SHALL BE N.P., RATED, GENERAL DUTY, QUART-WAVE, SHOCK-BREAK TYPE, ENCLOSURES SHALL BE AS REQUIRED BY N.E.C. AND LOCATION (WEATHERPROOF, EXPLOSION PROOF, ETC.). ENGRAVED LAMINATED PLASTIC IDENTIFICATION PLATES SHALL BE FURNISHED AND INSTALLED ON ALL DISCONNECT SWITCHES, CONDUCTORS AND STARTERS.
14. ALL FUSES FOR SAFETY SWITCHES SHALL BE DUAL ELEMENT, CARTRIDGE TYPE. FUSES SHALL BE THOSE MANUFACTURED BY EITHER RUSSELL OR ILLUMINESE. THE CONTRACTOR SHALL FURNISH TO THE OWNER ONE SPARE FUSE FOR EACH SIZE AND TYPE OF FUSE INSTALLED. FUSES 600 AMPS OR LESS SHALL BE CLASS "K1", OTHER UNLESS OTHERWISE NOTED. FUSES OVER 600 AMPS SHALL BE CLASS "L".
15. ALL GENERAL PURPOSE SWITCHES AND RECEPTACLES SHALL BE THE PRODUCT OF A SINGLE MANUFACTURER.
16. IT IS NOT THE INTENT OF THESE PLANS TO SHOW EVERY MINOR DETAIL OF CONSTRUCTION. THE CONTRACTOR IS EXPECTED TO FURNISH AND INSTALL ALL ITEMS FOR A COMPLETE ELECTRICAL SYSTEM, AND PROVIDE ALL NECESSARY DEVICES AND COMPONENTS TO BE PLACED IN PROPER WORKING ORDER.
17. EQUIPMENT GROUNDING AND EQUIPMENT GROUNDING CONDUCTORS SHALL BE PER NEC CODE SECTION 250. GROUNDING AND BONDING SIZE OF EQUIPMENT GROUNDING CONDUCTORS SHALL BE PER NEC CODE SECTION 250.122.
 - A SEPARATE GROUND CONDUCTOR SHALL BE INSTALLED IN EVERY CONDUIT AND RACEWAY AND SECURELY BONDED IN AN APPROVED GROUNDING TERMINAL AT BOTH ENDS OF THE RUN. THE GROUNDING CONDUCTOR SHALL BE SIZED IN ACCORDANCE WITH TABLE 250-93 OF THE N.E.C. CONTRACTOR SHALL SIZE CONDUIT TO ACCOMMODATE ADDITIONAL CONDUCTOR.

18. LOAD DATA IS BASED ON INFORMATION GIVEN TO THE ENGINEER AT THE TIME OF DESIGN. VERIFY ALL EQUIPMENT NAMEPLATE RATINGS BEFORE ORDERING.
19. CIRCUITS SHOWN ON PLANS ARE TO DETERMINE LOAD DATA AND PANEL SIZES. THE CONTRACTOR IS TO PROVIDE CIRCUITS AND ROUTING OF CONDUITS TO SUIT JOB CONDITIONS.
20. FURNISH AND INSTALL DISCONNECT SWITCHES, WIRING, AND CONNECTIONS ON AIR CONDITIONING SYSTEM AS SHOWN ON PLANS. ELECTRICAL CONTRACTOR SHALL VERIFY AND COORDINATE WITH MECHANICAL CONTRACTOR REGARDING SUPPLY AND INSTALLATION OF ALL REQUIRED CONDUITS.
21. ALL FLUORESCENT LIGHT FIXTURES SHALL HAVE IN LINE FUSING AND ENERGY SAVING BALLASTS. (ONLY REQUIRED IN DADE COUNTY)
22. ALL SWITCHGEAR, PANELS, STARTERS, CONDUCTORS ETC., SHALL BE THE PRODUCT OF A SINGLE MANUFACTURER. THE SYSTEM DESIGN IS BASED ON SQUARE D®. HOWEVER, COMPARABLE EQUIPMENT OF THE SAME TYPE WILL BE ACCEPTABLE. PULLBOX AND PULL-SPACE CIRCUIT BREAKERS SHALL NOT BE USED.
23. TYPEWRITTEN CIRCUIT INDEX SHALL BE AFFIXED TO INSIDE SURFACE OF EACH PANELBOARD DOOR, CLEARLY INDICATING AREA AND TYPE OF LOAD SERVED BY EACH BRANCH CIRCUIT PROTECTIVE DEVICE, INCLUDING SPARES. HAND PRINTED WILL NOT BE ACCEPTED.
 - ON ALL PANELS AND SWITCHGEAR, PLATES SHALL BE AFFIXED TO FRONT OF PANELS, INDICATING PANEL NAME, VOLTAGE AND AMPERAGE.
24. ENGRAVED, LAMINATED PLASTIC IDENTIFICATION PLATES SHALL BE FURNISHED AND INSTALLED ON ALL PANELS AND SWITCHGEAR. PLATES SHALL BE AFFIXED TO FRONT OF PANELS, INDICATING PANEL NAME, VOLTAGE AND AMPERAGE.
25. ALL UNDERGROUND PVC CONDUIT RUNS SHALL HAVE RIGID STEEL ELBOWS AND RIGID STEEL SECTIONS AT SLAB PENETRATIONS WHERE SUBJECT TO POSSIBLE DAMAGE. WHERE RIGID STEEL IS USED, IT SHALL BE COMPLETELY COATED WITH AN ALUMINUM FLUORIDE-RESISTANT BITUMASTIC PAINT, COPPER NO. 50, AND THREADS SHALL BE COATED WITH ZINC CHROMATE.
26. THE ELECTRICAL CONTRACTOR SHALL MEET AND COORDINATE WITH THE LOCAL POWER COMPANY AT THE SITE PRIOR TO CONSTRUCTION. AT THAT TIME, THE CONTRACTOR SHALL COORDINATE ALL RELATED WORK WITH THE UTILITY COMPANY'S RESPONSIBILITIES TO MEET THE OWNER'S SCHEDULE.
27. ALL ELECTRICAL CONDUCTORS SHALL BE INSTALLED IN AN APPROVED RACEWAY, EMT, MC, RIGID GALVANIZED CONDUIT OR SCHEDULE 40 PVC. MAXIMUM NUMBER OF 120V CIRCUITS ALLOWED IN A COMMON CONDUIT SHALL BE SIX (6). THE CONTRACTOR SHALL STRICTLY CONFORM TO THE N.E.C. REQUIREMENTS OF DENSIFYING FOR CONDUCTOR AMPACITY AND CONDUIT FILL.
 - 28. CONDUCTORS SHALL BE COLOR CODED AS FOLLOWS:
 - 300V SYSTEM
 - NEUTRAL - WHITE
 - PHASE A - BLACK
 - PHASE B - RED
 - PHASE C - BLUE
 - GROUND - GREEN
29. CONTRACTOR SHALL BE RESPONSIBLE FOR SEALING ALL CONDUIT PENETRATIONS MADE THROUGH FIRE RATED WALLS, CEILINGS, SLABS, ETC. PENETRATION SEALS SHALL BE PER ALL ASSEMBLY STANDARDS.
30. CONTRACTOR SHALL MAINTAIN A COMPLETE SET OF CONTRACT DRAWINGS AT JOB SITE WITH COLORED MARKINGS INDICATING PROGRESS OF WORK. THIS SET OF CONTRACT DRAWINGS IS TO BE SEPARATE FROM AND IN ADDITION TO CONTRACTOR'S CONSTRUCTION SET. EVERY UNIT OF EQUIPMENT, DEVICE, CONDUIT AND WIRE IS TO BE MARKED WHEN INSTALLED. USE GREEN TO INDICATE INSTALLATION AS SHOWN ON DRAWINGS AND USE RED TO INDICATE FIELD CHANGES. UPON COMPLETION OF WORK, THIS SET OF CONTRACT DRAWINGS IS TO BE TURNED OVER TO, AND BECOME PROPERTY OF THE ELECTRICAL ENGINEER.
31. IF ELECTRICAL CONTRACTOR HAS QUESTIONS, OR IN THEIR OPINION FINDS OMISSIONS OR ERRORS ON ELECTRICAL DOCUMENTS, IT IS THEIR RESPONSIBILITY TO BRING THIS TO THE ATTENTION OF THE ELECTRICAL ENGINEER IMMEDIATELY. IF ELECTRICAL CONTRACTOR PROCEEDS WITH ANY CHANGES TO THE CONTRACT DOCUMENTS, WITHOUT WRITTEN PRIOR APPROVAL FROM THE ELECTRICAL ENGINEER, CONTRACTOR WILL NOT BE COMPENSATED.
32. IN ALL AREAS SPECIFIED IN 210.52, ALL 125 VOLT, 15 AND 20 AMP. RECEPTACLES SHALL BE LISTED TAMPER-RESISTANT AS PER NEC CODE SECTION 406.11.
33. COMPLY AS REQUIRED AS STATED IN NEC ART. 210.6.
34. ALL ELECTRICAL EQUIPMENT SHALL COMPLY WITH NEC ART. 110.26.
35. COMPLY AS REQUIRED AS STATED IN NEC ART. 308.12.

ELECTRICAL SYMBOL LEGEND

BOXES & FITTINGS

- CEILING MOUNTED JUNCTION BOX
- WALL MOUNTED JUNCTION BOX, 18" A.F.F. OR AS OTHERWISE NOTED.
- CEILING MOUNTED JUNCTION BOX, 12"x12"x4" DEEP UNLESS OTHERWISE INDICATED.
- PULLBOX, SIZED AS INDICATED OR AS REQUIRED BY N.E.C.

SYMBOL SUFFIXES

- A.F.F. ABOVE FINISHED FLOOR
- C.B. CIRCUIT BREAKER
- C.C. CIRCUIT
- COND. OR C. CONDUIT
- E. EXISTING
- E.C. EMPTY CONDUIT
- E.M.C. ELECTRIC WATER COOLER
- E.M.H. ELECTRIC WATER HEATER
- ENC. ENCLOSURE
- FA. FIRE ALARM
- GF. GROUND FAULT INTERRUPTER
- GRD. GROUND
- HND. HIGH INTENSITY DISCHARGE
- PNL. PANEL
- SW. SWITCH
- UNP. UNLESS OTHERWISE NOTED
- INDICATES WEATHERPROOF RIMA SR EQUIPMENT
- MOUNTED
- FUSE AS PER MANUFACTURER'S RECOMMENDATION
- MANUAL VOLUME DAMPER
- ARC FAULT INTERRUPTER

PANELBOARDS

- POWER LIGHTING OR DISTRIBUTION PANELBOARD (NIB)
- TRANSFORMER WALL OR FLOOR MOUNTED, SIZE AND MOUNTING AS INDICATED ON DWGS.

RECEPTACLES

- 120V, 1 PHASE, 60 HZ., 20 AMP. DUPLEX RECEPTACLE W/ID. 18" A.F.F.
- SAME AS ABOVE EXCEPT W/ID. AT 6" ABOVE COUNTER MOUNT RECEPTACLE HORIZONTAL
- 120V, 1 PHASE, 60 HZ., 20 amp. DUAL DUPLEX RECEPTACLE W/ID. 18" a.f.f.
- SPECIAL PURPOSE RECEPTACLE
 - 2P. DENOTES POLES, 30 DENOTES AMPERAGE RATING
- 120V, 1 PHASE, 60 HZ., 20 AMP. DUPLEX RECEPTACLE FLOOR MTD. BOX COVER TO BE DETERMINED BY ARCHITECT
- 120V, 1 PHASE, 60 HZ., 20 AMP. SWITCH DUPLEX RECEPTACLE

MOTORS & CONTROLS

- MOTOR, 5 = 5 H.P. OR AS OTHERWISE INDICATED.
- MOTOR MAGNETIC STARTER.
- MOTOR COMPACT STARTER AND DISCONNECT.
- THERMOSTAT
- EXHAUST FAN

WIRING

- HOMERUN TO PANEL "A" 1-3-5 ARE CIRCUIT NOS. 1000 ARE NO. OF CONDUCTORS (✓) INDICATES GROUND WIRE SIZED AS PER N.E.C. ART. 250.
- INDICATES A EXISTING CONDUIT RUN CONCEALED IN A CEILING OR WALL.
- INDICATES A EXISTING CONDUIT RUN CONCEALED IN FLOOR, EMBEDDED IN CONCRETE OR UNDERGROUND.
- INDICATES AN EXISTING CONDUIT RUN.
- INDICATES A CAPPED CONDUIT.
- INDICATES A FLEXIBLE METAL CONDUIT CONNECTION, USE LIQUID TIGHT CONDUIT IN WET, DAMP OR OILY LOCATIONS.
- FLEXIBLE EQUIPMENT CONNECTION.
- GROUNDING SYSTEM CONDUCTOR, BARE COPPER CONDUCTOR OR INSULATED CONDUCTOR IN CONDUIT AS INDICATED.
- CONDUIT RUN TURNED DOWN.
- CONDUIT RUN TURNED UP.
- CONDUIT EXPANSION JOINT

CHAMPLAIN TOWERS SOUTH CONDOMINIUM
8777 COLLINS AVENUE
SURFSIDE, FLORIDA 33154

CHAMPLAIN TOWERS SOUTH 40-YEAR BUILDING REPAIR & RESTORATION
PHASE 1C: OVERALL BUILDING REPAIR AND RESTORATION

SEALED
Hector A. Vidal, P.E.
10/20/2024



Structural Engineers | Remediation & Parking Consultants
100 N.W. 23rd Street, Suite 100, Fort Lauderdale, FL 33304-1001
Tel: 305-460-1800 | www.morabitoconsultants.com
© Copyright Morabito Consultants, Inc.

No.	Date	Revisions

DESIGNED G.V./H.O. DRAWN G.V./H.O.
CHECKED H.V. APPROVED H.V.

Project No.: 18217
Date: 04-01-2021
Scale: AS SHOWN

Sheet Title: ELECTRICAL SYMBOL LEGEND AND NOTES

Sheet No.: E-0



CONSULTING ENGINEERS
241 N.W. SOUTH RIVER DRIVE
MIAMI, FL 33128
CERTIFICATION OF AUTHORIZATION #0036
HECTOR VIDAL, P.E. 0E-46504
PHONE: (305) 571-1880 FAX: (305) 571-1881
INFO@HVIDALENGINEERING.COM
VIDALENGINEERING.COM

SEA License: 0000000
Expiry: 000000

PRELIMINARY
NOT FOR
CONSTRUCTION



No.	Date	Revisions

DESIGNED	EC	DRAWN	EC
CHECKED	RJM	APPROVED	FPM

Project No.: 18217
Date: 11/03/2020
Scale: 3/32" = 1'-0"

Sheet Title:
FIRST FLOOR PARKING PLAN - LIGHTING

Sheet No.:
E-2



FIRST FLOOR PARKING PLAN - LIGHTING
SCALE: 3/32"=1'-0"

Symbol	No.	Label	Description	Quantity	Unit	Total
●	1	●	40" x 40" x 12" BOLLARD LIGHT	10	EA	10
○	2	○	18" x 18" x 18" SIGN LIGHT	1	EA	1
□	3	□	4" x 4" x 4" SIGN LIGHT	1	EA	1

Symbol	No.	Label	Description	Quantity	Unit	Total
○	1	○	40" x 40" x 12" BOLLARD LIGHT	10	EA	10
○	2	○	18" x 18" x 18" SIGN LIGHT	1	EA	1
○	3	○	4" x 4" x 4" SIGN LIGHT	1	EA	1

Symbol	No.	Label	Arrangement	Manufacturer	Description	Luminaires Lumens	LLP	Luminaires Watts	Assembly Watts
●	1	A	SINGLE	Luminix Canada Inc.	MB120-1200000-1200-1200-1200 (Series of Future)	12000	0.168	24	24
○	2	B	SINGLE	Luminix Canada Inc.	MB120-1200000-1200-1200-1200 (Series of Future)	12000	0.168	24	24
□	3	C	SINGLE	Luminix Lighting	DRAPY LED P2 30K WFL WOLFL 10 000 WFL BROWN MOUNT A.F.S.	4700	0.055	40	40

Label	LightType	Units	Avg	Max	Min	AvgWts	MaxWts
POOL DECK	Recessed	14	0.00	0.0	0.0	0.0	0.0
TOP LEFT AREA	Recessed	14	0.78	1.0	0.5	7.00	10.00



CONSULTING ENGINEERS
241 N.W. SOUTH RIVER DRIVE
HOUSTON, TEXAS 77058
CERTIFICATION OF AUTHORIZATION #00595
PHONE: (281) 571-1880 FAX: (281) 571-1881
INFO@HVIDALENGINEERING.COM
HVIDALENGINEERING.COM

CHAMPLAIN TOWERS
SOUTH CONDOMINIUM
8777 COLLINS AVENUE
SUITE 3154
SURFSIDE, FLORIDA 33154

CHAMPLAIN TOWERS SOUTH 40-YEAR BUILDING
REPAIR & RESTORATION
PHASE IIC: OVERALL BUILDING
REPAIR AND RESTORATION

SCALE: 1/8" = 1'-0"
Issued: 04/01/2021



No.	Date	Revisions

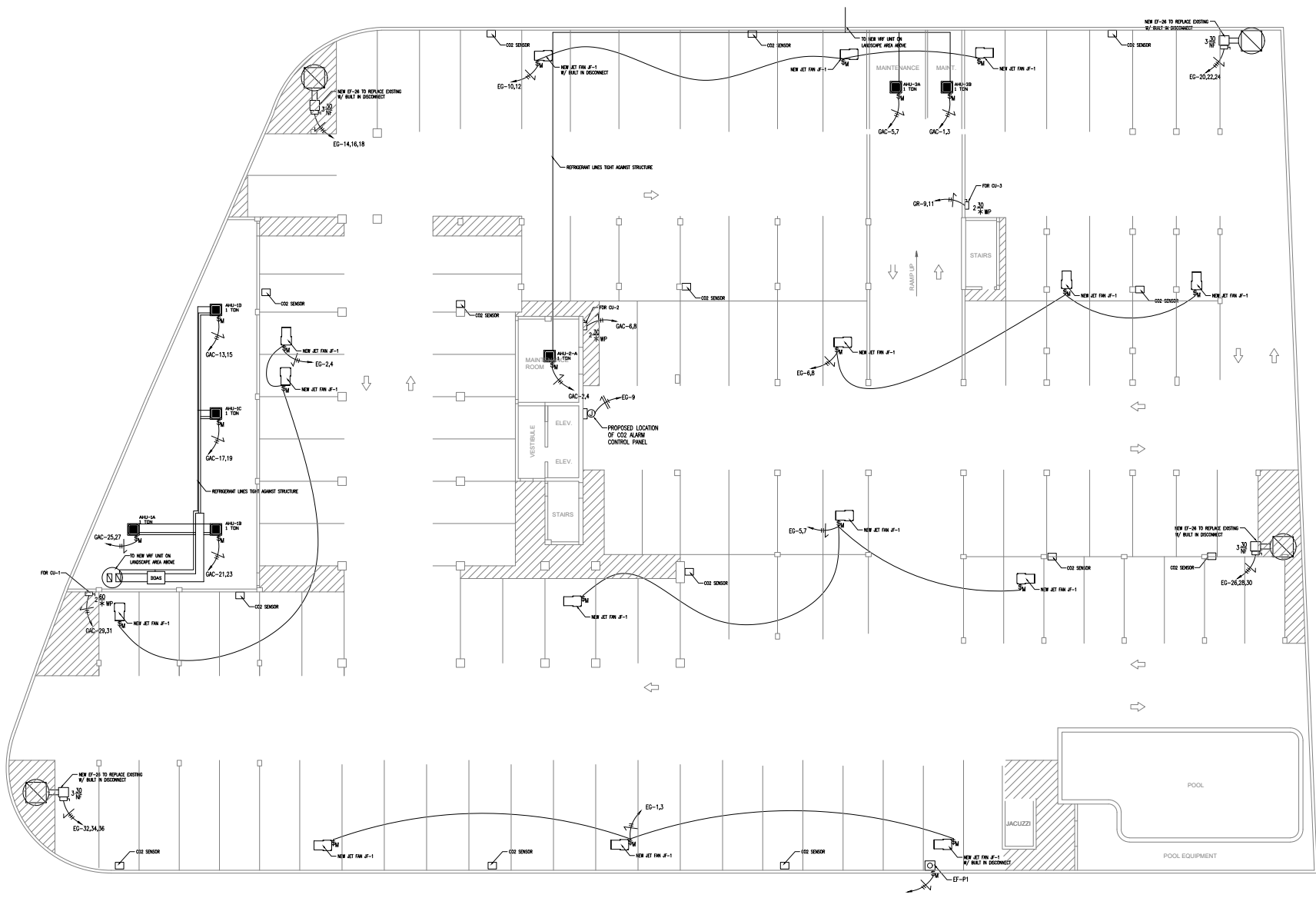
DESIGNED	G.V./H.O.	DRAWN	G.V./H.O.
CHECKED	H.V.	APPROVED	H.V.

Project No.: 18217
Date: 04-01-2021
Scale: AS SHOWN

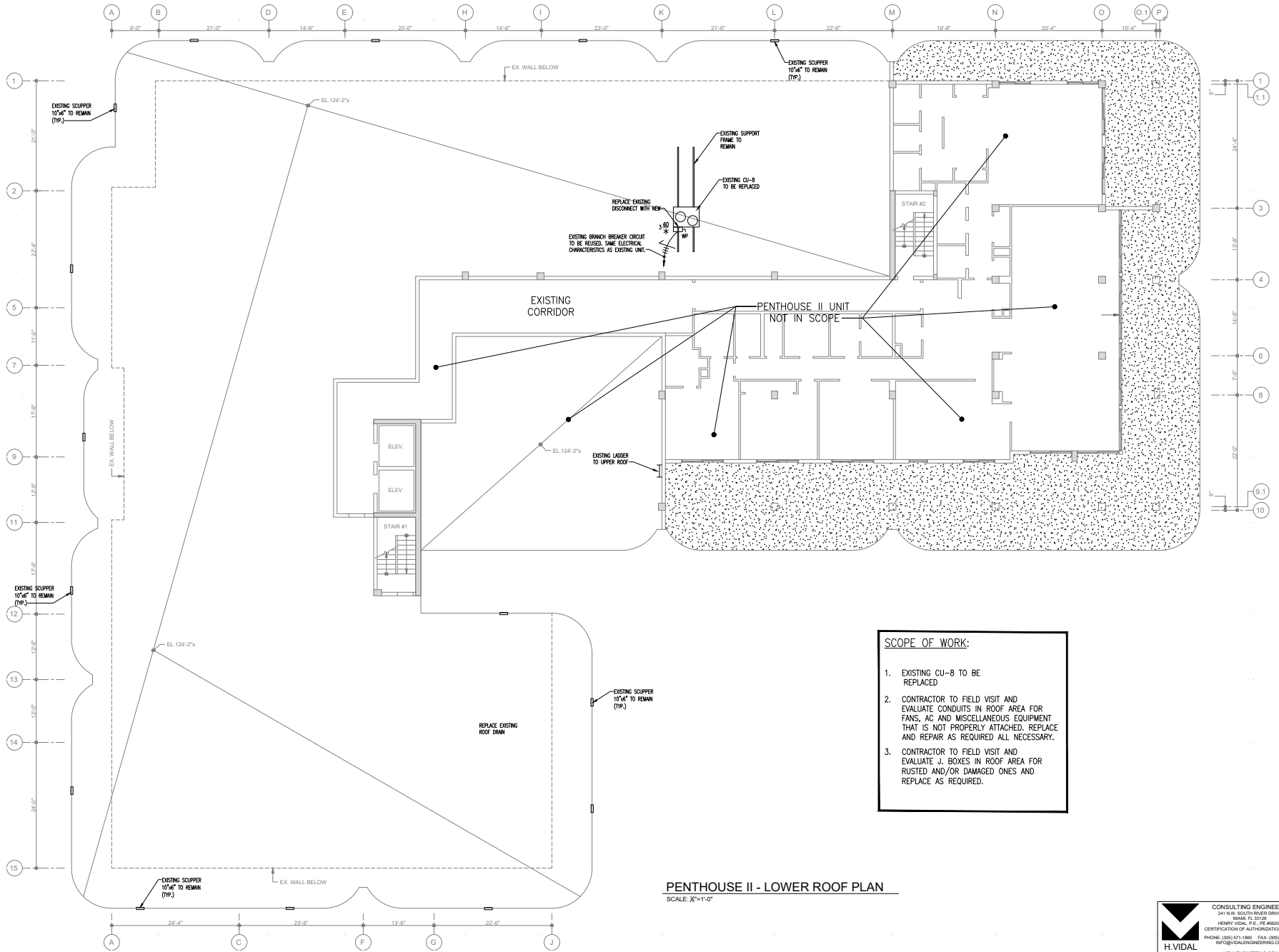
Sheet Title:
BASEMENT PARKING
PLAN - POWER

Sheet No.:
E-3

H. VIDAL & ASSOCIATES
CONSULTING ENGINEERS
241 N.W. SOUTH RIVER DRIVE
MIAMI, FL 33129
CERTIFICATION OF AUTHORIZATION #0696
PHONE (305) 571-1880 FAX (305) 571-1881
INFO@HVIDAL-ENGINEERING.COM
VIDALENGINEERING.COM



BASEMENT PARKING PLAN - POWER
SCALE: 3/32"=1'-0"



PENTHOUSE II - LOWER ROOF PLAN

SCALE: 1/8"=1'-0"

SCOPE OF WORK:

1. EXISTING CU-8 TO BE REPLACED
2. CONTRACTOR TO FIELD VISIT AND EVALUATE CONDUITS IN ROOF AREA FOR FANS, AC AND MISCELLANEOUS EQUIPMENT THAT IS NOT PROPERLY ATTACHED. REPLACE AND REPAIR AS REQUIRED ALL NECESSARY.
3. CONTRACTOR TO FIELD VISIT AND EVALUATE J. BOXES IN ROOF AREA FOR RUSTED AND/OR DAMAGED ONES AND REPLACE AS REQUIRED.

**CHAMPLAIN TOWERS
SOUTH CONDOMINIUM**
8777 COLLINS AVENUE
SURFSIDE, FLORIDA 33154

**CHAMPLAIN TOWERS SOUTH 40-YEAR BUILDING
REPAIR & RESTORATION**
**PHASE IC: OVERALL BUILDING
REPAIR AND RESTORATION**

SCALE: 1/8"=1'-0"

morabito consultants
Structural Engineers / Remediation & Parking Consultants
200 N. Gordon Hwy / Palm Beach Gardens, FL 33418-1101
Tel.: 561.966.1100 www.morabitoconsultants.com
© Copyright Morabito Consultants, Inc.

No.	Date	Revisions

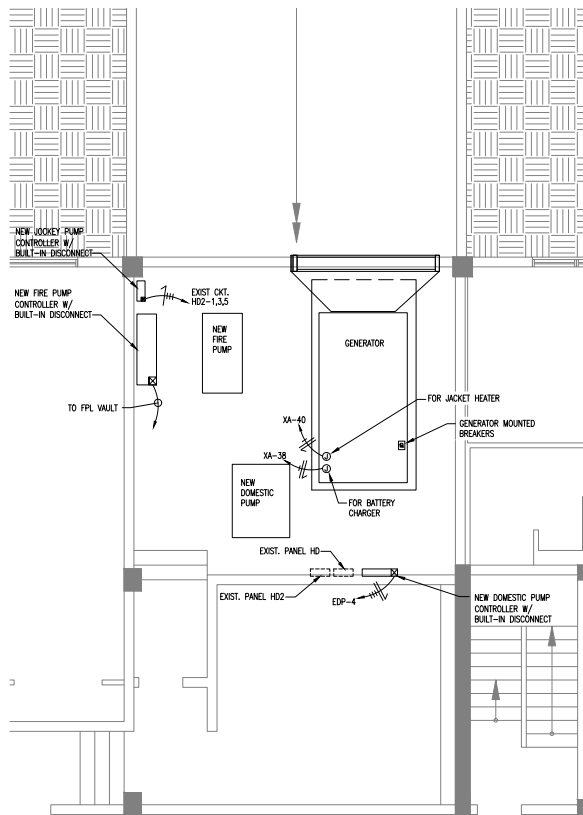
DESIGNED	G.V./H.O.	DRAWN	G.V./H.O.
CHECKED	H.V.	APPROVED	H.V.

Project No.: 18217
Date: 04-01-2021
Scale: AS SHOWN

Sheet Title:
PENTHOUSE II FLOOR PLAN / LOWER FLOOR

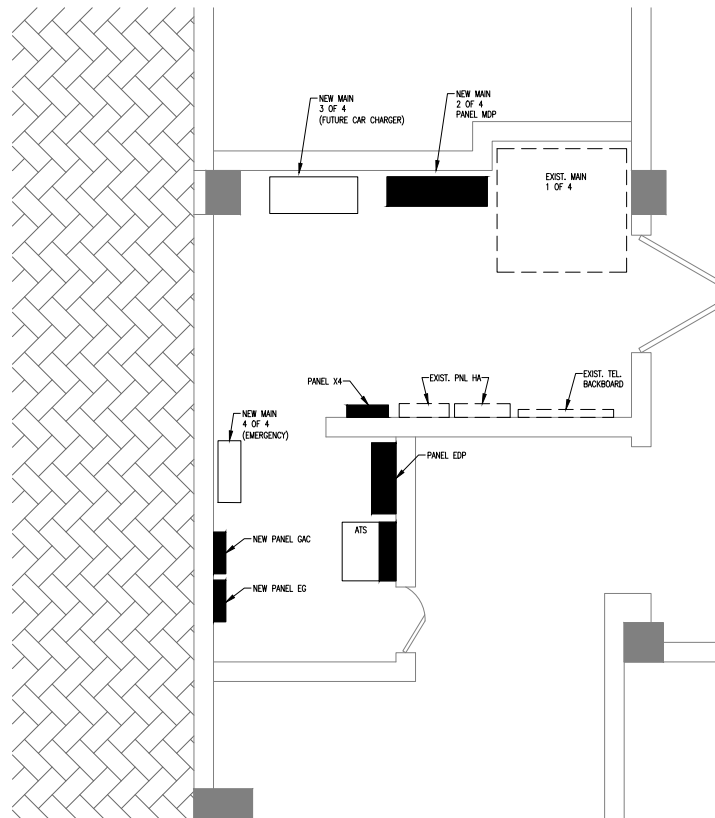
Sheet No.: E-4

H. VIDAL & ASSOCIATES
CONSULTING ENGINEERS
241 N.W. SOUTH RIVER DRIVE
MIAMI, FL 33129
REBECCY VIDAL, P.E. #E-49504
CERTIFICATION OF AUTHORIZATION #9266
PHONE: (305) 571-1880 FAX: (305) 571-1881
INFO@HVIDALENGINEERING.COM
HVIDALENGINEERING.COM



GENERATOR ROOM PLAN

SCALE: 1/4" = 1'-0"



MAIN ELECTRICAL ROOM PLAN

SCALE: 1/2" = 1'-0"

ADDITIONAL MAIN ELECTRIC WORK NOTES:

1. PROVIDE FIRE PROOFING TO ALL PENETRATIONS. USE APPROVED 2-HOUR FIRE PROOF CAULK.
2. CLOSE ALL OPEN PENETRATIONS WITH APPROVED 2-HOUR FIRE PROOF CAULK

CHAMPLAIN TOWERS SOUTH CONDOMINIUM
8777 COLLINS AVENUE
SURFSDIE, FLORIDA 33154

CHAMPLAIN TOWERS SOUTH 40-YEAR BUILDING REPAIR & RESTORATION
PHASE IIC: OVERALL BUILDING REPAIR AND RESTORATION

SEAL: Henry A. Vidal, P.E.
PE 40430



No.	Date	Revisions

DESIGNED	G.V./H.O.	DRAWN	G.V./H.O.
CHECKED	H.V.	APPROVED	H.V.

Project No.: 18217
Date: 04-01-2021
Scale: AS SHOWN
Sheet Title:
GENERATOR ROOM PLAN

Sheet No.:
E-5



No.	Date	Revisions

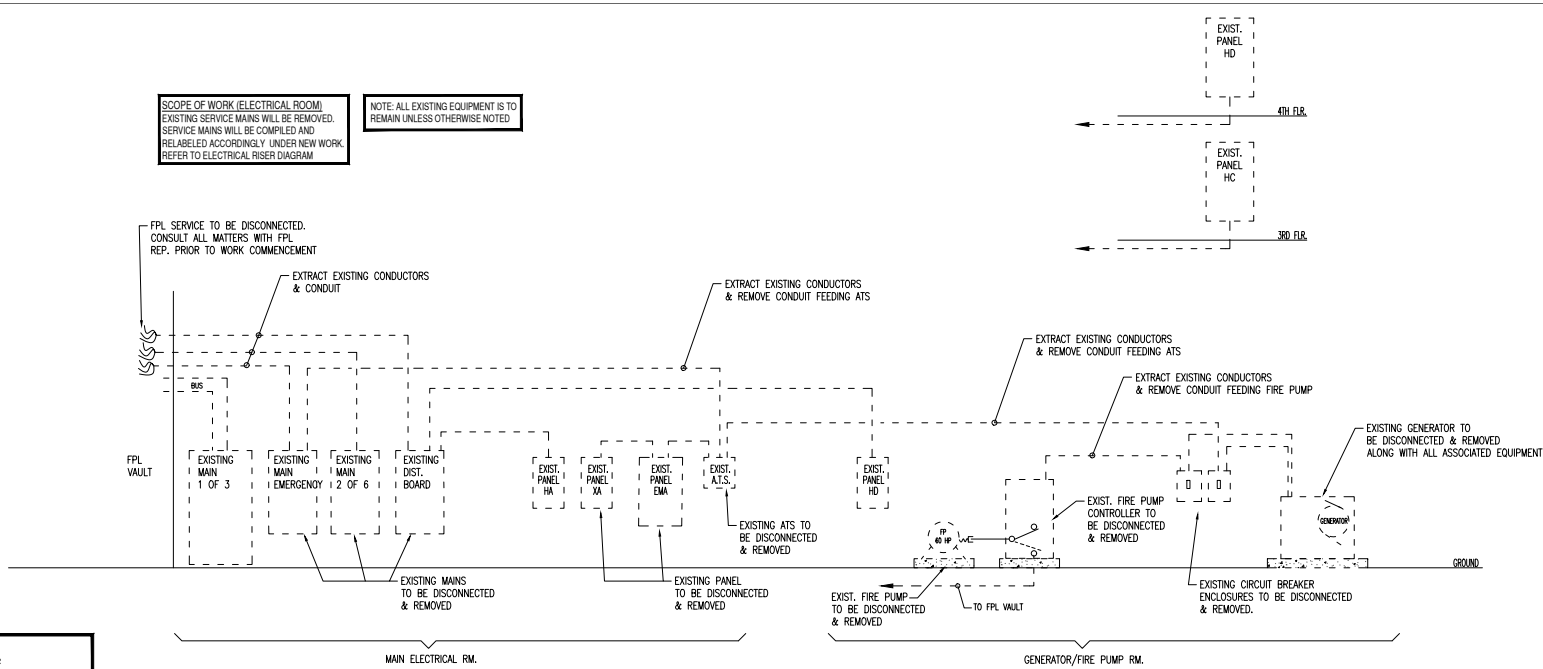
DESIGNED	G.V./H.O.	DRAWN	G.V./H.O.
CHECKED	H.V.	APPROVED	H.V.

Project No.: 18217
Date: 04-01-2021
Scale: AS SHOWN
Sheet Title: ELECTRICAL NOTES

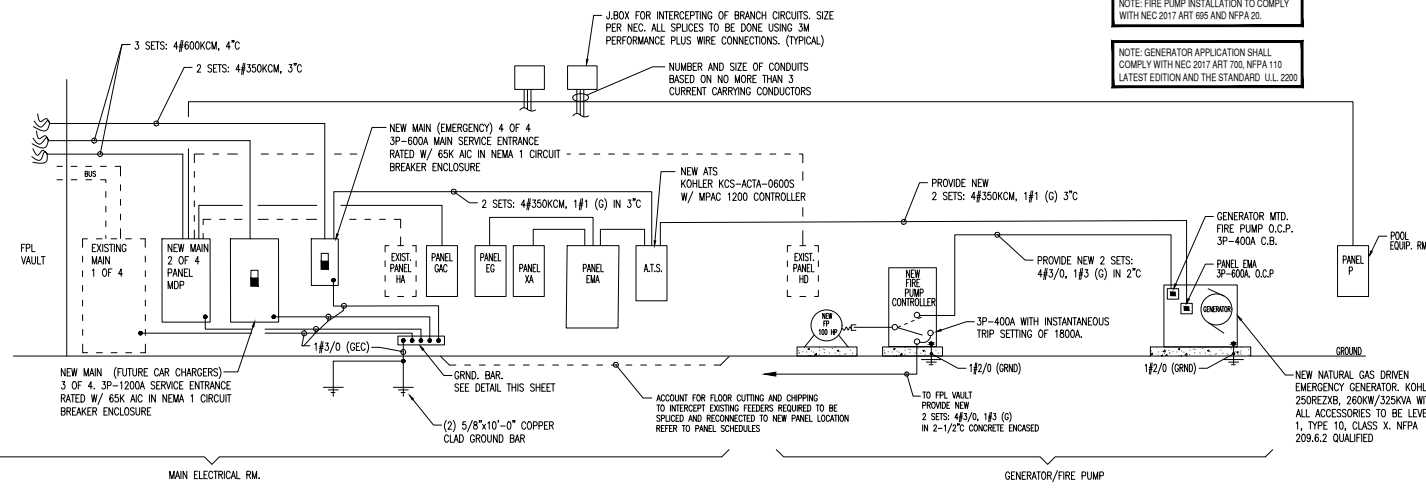
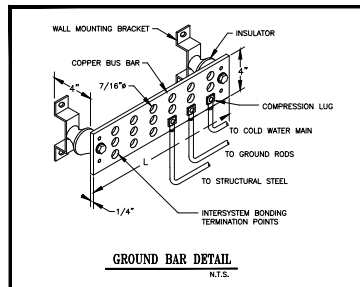
H. VIDAL & ASSOCIATES
CONSULTING ENGINEERS
241 N.W. SOUTH RIVER DRIVE
MIAMI, FL 33136
CERTIFICATION OF AUTHORIZATION #0296
PHONE (305) 571-1880 FAX (305) 571-1881
INFO@HVIDAL-ENGINEERING.COM
VIDALENGINEERING.COM

SCOPE OF WORK (ELECTRICAL ROOM)
EXISTING SERVICE MAINS WILL BE REMOVED.
SERVICE MAINS WILL BE COMPILED AND
RELABELED ACCORDINGLY UNDER NEW WORK.
REFER TO ELECTRICAL RISER DIAGRAM

NOTE: ALL EXISTING EQUIPMENT IS TO
REMAIN UNLESS OTHERWISE NOTED.



ELECTRICAL RISER DIAGRAM (DEMO)
N.T.S.



ELECTRICAL RISER DIAGRAM (NEW WORK)
N.T.S.

NOTE: FIRE PUMP INSTALLATION TO COMPLY
WITH NEC 2017 ART 695 AND NFPA 20.

NOTE: GENERATOR APPLICATION SHALL
COMPLY WITH NEC 2017 ART 700, NFPA 110
LATEST EDITION AND THE STANDARD U.L.L. 2200.

KOHLER

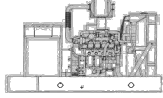
Model: 250REZXB

208-600 V Gas

9001 EPA-Certified for Stationary and Mobile Emergency and Non-Emergency Applications

Standard Features
• Kohler Co. provides one source responsibility for the generating system and accessories.

Ratings Range
Standby kW: 170-220
Prime kW: 135-180
Net kW: 120-165



Generator Set Ratings

Table with columns for Alternator, Voltage, kW, kVA, RPM, Hz, and Gas (Propane/LP). Includes a small diagram of a fuel filter and a note about a fuel filter canister.

Alternator Specifications

Table with columns for Specification and Detail. Includes information on IEEE, NEMA, and ANSI standards compliance, insulation class, and cooling methods.

Application Data

Table with columns for Engine, Electrical, Fuel, and Exhaust. Includes details on engine specifications, electrical systems, fuel requirements, and exhaust options.

Application Data

Lubrication

Oil: SAE 15W-40, 15W-50
Filter: Full-flow, pleated

Cooling

Method: Air-cooled
Fan: Full-flow, pleated

Controllers

Options: Parallel, load sharing, remote monitoring

Operation Requirements

Altitude: Up to 5000 ft
Ambient Temperature: -20 to 50°C

Dimensional Data

Table with columns for Model, Weight, and Dimensions (Height, Depth, Width). Includes a small diagram of the generator set.

KOHLER

Model KCS/KCP/KCC Automatic Transfer Switch Standard Any Breaker Rated

9001 EPA-Certified for Stationary and Mobile Emergency and Non-Emergency Applications



Transfer Switch Standard Features
• UL 1008 listed
• CSA certification available

Available Controllers
• Decision-Maker MPAC 1200
• Decision-Maker MPAC 1500

Ratings
Model: KCC, KCP, KCC
Current: 30-4000 amps
Voltage: 208-600V
Frequency: 50/60 Hz

Standard-Transition Models (KCS)

Programmed-Transition Models (KCP)

Closed-Transition Models (KCC)

Available Automatic Transfer Switch Controllers

Decision-Maker MPAC 1500 Controller



- LCD display, 4 lines x 20 characters, backlit
• Complete programming and viewing capability at the door using the keypad and LCD display
• LED indicators: Source available, transfer switch position, service required, fault, and 'Test' button

For more information about Decision-Maker MPAC 1200 features and functions, see specification sheet D11-121.

For more information about Decision-Maker MPAC 1500 features and functions, see specification sheet D11-122.

Weights and Dimensions

Note: Always use the transfer switch dimension drawing for planning and installation.

Weights and dimensions are shown for NEMA Type 1 enclosures, NEMA Type 3R enclosures and open units.

Large table with columns for Model, Voltage, Rating, Height, Depth, and Width. Provides detailed dimensional and weight data for various generator and transfer switch models.

D11-121 (Rev. 05/04) MPAC1500 Transfer Switch 1500V Page 1

D11-122 (Rev. 05/04) MPAC1200 Transfer Switch 1200V Page 1

D11-123 (Rev. 05/04) MPAC1500 Transfer Switch 1500V Page 1

CHAMPLAIN TOWERS SOUTH CONDOMINIUM
8777 COLLINS AVENUE
SUNRISE, FLORIDA 33154

CHAMPLAIN TOWERS SOUTH 40-YEAR BUILDING
REPAIR & RESTORATION
PHASE 1C: OVERALL BUILDING
REPAIR AND RESTORATION

ISA

Henry A. Vidal, P.E.



Structural Engineers | Remediation & Paving Contractors

200 N. Central Ave. | Palm Beach Gardens, FL 33410-1700

TEL: 561.955.1100 | WWW.MORABITOCONSULTANTS.COM

© Copyright Morabito Consultants, Inc.

Table with columns: No., Date, Revisions. Contains a grid for tracking design revisions.

DESIGNED: G.V./H.O.
CHECKED: H.V.
PROJECT NO.: 18217
DATE: 04-01-2021
SHEET: AS SHOWN

ELECTRICAL GEAR SPECIFICATIONS

Sheet No.: E-7



CONSULTING ENGINEERS
241 N.W. South River Drive
MARIETTA, GA 30067
CERTIFICATION OF AUTHORIZATION #0696
PHONE (770) 571-1860 FAX (770) 571-1881
WWW.HVIDALANDASSOCIATES.COM

VIDALENGINEERING.COM

DIST. PANEL-MDP			120/208 VOLTS, 3 φ 4 WIRE - S/N			95K A/C		
SERVICE ENTRANCE RATED			225 AMP BUS			208 VOLTS		
			GND. FAULT PROT. SHUNT-TRIP			TOP OR BOTTOM FED		
CKT NO.	DESCRIPTION OF LOAD	BRANCH SIZE (AMPS)		FEEDER SIZE		KVA		
		FRAME	TRIP	WIRE	CONDUIT			
1	PANEL HA	3	200	424/0 1/8 (5)	2"	48.6		
2	PANEL HB	200	424/0 1/8 (5)	2"	43.9			
3	PANEL HC	100	424 1/8 (5)	2"	51.8			
4	PANEL HD	200	424/0 1/8 (5)	2"	44.6			
5	WATER HEATER	125	3/4 1/8 (5)	1-1/2"	36.0			
6	PANEL P	300	424/0 1/8 (5)	2-1/2"	15.0			
7	AC	400	2 SERIS 3/4/0 1/8 (5)	2"	67.6			
8	PANEL GAC	150	424/0 1/8 (5)	2"	16.2			
9	SPACE		200					
10	SPACE		200					
11								
12								
13								
14								
15								
16								
17								
18								
19								
20								

TOTAL LOAD: (KVA) 323.2

TOTAL CONNECTED LOAD: (A) 898

DIST. PANEL-EDP			120/208 VOLTS, 3 φ 4 WIRE - S/N			95K A/C		
			600 AMP BUS			208 VOLTS		
			GND. FAULT PROT. SHUNT-TRIP			TOP OR BOTTOM FED		
CKT NO.	DESCRIPTION OF LOAD	BRANCH SIZE (AMPS)		FEEDER SIZE		KVA		
		FRAME	TRIP	WIRE	CONDUIT			
1	ELEVATOR	3	200	3/4/0 1/8 (5)	2"	26.0		
2	PANEL EG	200	424 1/8 (5)	2"	15.2			
3	PANEL YA	150	424/0 1/8 (5)	2"	26.3			
4	DOMESTIC WATER PUMP	150	424 1/8 (5)	1-1/2"	16.7			
5	EXISTING	80	3/4 1/8 (5)	1-1/4"	14.4			
6								
7								
8								
9								
10								
11								
12								
13								
14								
15								
16								
17								
18								
19								
20								

TOTAL LOAD: (KVA) 105.6

TOTAL CONNECTED LOAD: (A) 293

PANEL-YA			120/208 VOLTS, 3 φ 4 WIRE			95K A/C		
LOCATION: -			225 AMP BUS			208 VOLTS		
			GND. BUS			NEUTRAL		
LOAD DESCRIPTION	WIRE & CONDUIT	WIRE	LOAD (KVA)		CIRCUIT	LOAD (KVA)	WIRE & CONDUIT	LOAD DESCRIPTION
			NO.	TRIP				
EXIST			1	20	0.4	1.4		
			2	0.8	1.1	0.4		
			3	0.5	0.8	1.1		
			4	0.4	0.9	1.1		
			5	0.8	1.1	1.4		
			6	0.7	1.3	1.4		
			7	0.6	1.5	1.2		
			8	0.6	1.5	1.2		
			9	0.5	1.7	2.4		
			10	1.0	1.9	2.4		
			11	1.0	2.1	1.3		
			12	1.0	2.3	1.4		
			13	2.1	2.5	2.6		
			14	2.1	2.7	2.8		
			15	2.1	2.9	2.7		
			16	2.1	2.9	2.7		
			17	3.1	0.5	3.2		
			18	3.3	0.7	3.4		
			19	3.5	0.4	3.6		
			20	3.7	1.0	3.8		
			21	3.9	1.0	4.0		
			22	4.1		4.2		

TOTAL CONNECTED LOAD: 29.3 KVA, 81 AMPS

PANEL-EG			120/208 VOLTS, 3 φ 4 WIRE			10K A/C		
LOCATION: -			225 AMP BUS			208 VOLTS		
			GND. BUS			NEUTRAL		
LOAD DESCRIPTION	WIRE & CONDUIT	WIRE	LOAD (KVA)		CIRCUIT	LOAD (KVA)	WIRE & CONDUIT	LOAD DESCRIPTION
			NO.	TRIP				
JF-1A	#2 3/4"	2	20	0.8	1.1	1.4		JF-1A
			1	0.8	1.1	1.4		
JF-1B	#2 3/4"	2	20	0.8	1.1	1.4		JF-1B
			1	0.8	1.1	1.4		
CO2 ALARM	#2 1/2"	1	20	0.4	0.8	1.0		JF-1A
SPACE			11	0.8	1.2	0.8		
			12	0.8	1.2	0.8		
			13	0.8	1.4	0.8		
			14	0.8	1.4	0.8		
			15	0.8	1.6	0.8		
			16	0.8	1.6	0.8		
			17	0.8	1.6	0.8		
			18	0.8	1.6	0.8		
			19	0.8	2.0	0.8		
			20	0.8	2.0	0.8		
			21	0.8	2.2	0.8		
			22	0.8	2.4	0.8		
			23	0.8	2.4	0.8		
			24	0.8	2.4	0.8		
			25	0.8	2.8	0.8		
			26	0.8	2.8	0.8		
			27	0.8	2.8	0.8		
			28	0.8	3.0	0.8		
			29	0.8	3.0	0.8		
			30	0.8	3.0	0.8		
			31	0.8	3.2	0.8		
			32	0.8	3.4	0.8		
			33	0.8	3.4	0.8		
			34	0.8	3.6	0.8		
			35	0.8	3.6	0.8		
			36	0.8	3.6	0.8		
			37	0.8	3.8	0.8		
			38	0.8	3.8	0.8		
			39	0.8	4.0	0.8		
			40	0.8	4.0	0.8		
			41	0.8	4.2	0.8		

TOTAL CONNECTED LOAD: 16.2 KVA, 42 AMPS

PANEL-GAC			120/208 VOLTS, 3 φ 4 WIRE			42K A/C		
LOCATION: -			225 AMP BUS			208 VOLTS		
			GND. BUS			NEUTRAL		
LOAD DESCRIPTION	WIRE & CONDUIT	WIRE	LOAD (KVA)		CIRCUIT	LOAD (KVA)	WIRE & CONDUIT	LOAD DESCRIPTION
			NO.	TRIP				
AMU-2B	#2 3/4"	2	15	0.2	1.1	0.4		AMU-2A
			1	0.2	1.1	0.4		
AMU-2A	#2 3/4"	2	15	0.2	1.1	0.4		AMU-2
			1	0.2	1.1	0.4		
CU-3	#2 3/4"	2	25	2.0	3.0	3.0		AMU-2B
			1	2.0	3.0	3.0		
AMU-10	#2 3/4"	2	15	0.2	1.3	0.2		SPACE
			1	0.2	1.3	0.2		
AMU-1C	#2 3/4"	2	15	0.2	1.3	0.2		SPACE
			1	0.2	1.3	0.2		
AMU-8B	#2 3/4"	2	15	0.2	1.3	0.2		SPACE
			1	0.2	1.3	0.2		
AMU-1A	#2 3/4"	2	15	0.2	1.3	0.2		SPACE
			1	0.2	1.3	0.2		
CU-1	#2 3/4"	2	40	3.2	2.9	3.2		SPACE
			1	3.2	3.1	3.2		
SPACE			33	0.2	3.3	0.2		SPACE
			34	0.2	3.3	0.2		
SPACE			35	0.2	3.3	0.2		SPACE
			36	0.2	3.3	0.2		
SPACE			37	0.2	3.3	0.2		SPACE
			38	0.2	3.3	0.2		
SPACE			39	0.2	3.3	0.2		SPACE
			40	0.2	3.3	0.2		
SPACE			41	0.2	3.3	0.2		SPACE

TOTAL CONNECTED LOAD: 16.2 KVA, 42 AMPS

PANEL-P			120/208 VOLTS, 3 φ 4 WIRE			10K A/C		
LOCATION: -			225 AMP BUS			208 VOLTS		
			GND. BUS			NEUTRAL		
LOAD DESCRIPTION	WIRE & CONDUIT	WIRE	LOAD (KVA)		CIRCUIT	LOAD (KVA)	WIRE & CONDUIT	LOAD DESCRIPTION
			NO.	TRIP				
SPACE	#2 1/2"	1	20	0.4	1.1	1.4		SPACE
			1	0.4	1.1	1.4		
			2	0.4	1.1	1.4		
			3	0.4	1.1	1.4		
			4	0.4	1.1	1.4		
			5	0.4	1.1	1.4		
			6	0.4	1.1	1.4		
			7	0.4	1.1	1.4		
			8	0.4	1.1	1.4		
			9	0.4	1.1	1.4		
			10	0.4	1.1	1.4		
			11	0.4	1.1	1.4		
			12	0.4	1.1	1.4		
			13	0.4	1.1	1.4		
			14	0.4	1.1	1.4		
			15	0.4	1.1	1.4		
			16	0.4	1.1	1.4		
			17	0.4	1.1	1.4		
			18	0.4	1.1	1.4		
			19	0.4	1.1	1.4		
			20	0.4	1.1	1.4		
			21	0.4	1.1	1.4		
			22	0.4	1.1	1.4		
			23	0.4	1.1	1.4		
			24	0.4	1.1	1.4		
			25	0.4	1.1	1.4		
			26	0.4	1.1	1.4		
			27	0.4	1.1	1.4		
			28	0.4	1.1	1.4		
			29	0.4	1.1	1.4		
			30	0.4	1.1	1.4		
			31	0.4	1.1	1.4		
			32	0.4	1.1	1.4		
			33	0.4	1.1	1.4		
		</						

2 Hour Fire Rated Through Penetration Firestop for Multiple Metal Pipe through Concrete floors or walls using Fyre-SHIELD.

TREMCO
3735 Green Rd.
Beachwood, OH, 44122
Drawing not to scale

UL
Classified
System
CAJ1047
(326)

F-rating = 2 Hr.
T-rating = 0 Hr.

NOTE: SIMILAR PRODUCTS OF OTHER MANUFACTURERS MAY BE USED IF ACCEPTED EQUAL.

1 Floor or Wall assembly = 4" thick concrete, Max. area of opening is 288 sq. in.
 2 • Nom. 8" diam. (or smaller) Sch. 40 (or heavier) steel pipe
 • Nom. 4" diam. (or smaller) copper pipe.
 • Max. number of pipes with opening is three (3).
 3 A) Forming Material - (Not shown) - Nom. 1" thick polyurethane backer rod friction fitted into opening.
 B) Nom. 3/8" Fyre-SHIELD thickness installed within opening.

NOTE: For wall apply Fyre-SHIELD to both surfaces of wall.

The products used in the above assembly have been tested in accordance with the following:
 • ASTM D2954 (UL1709) Standard Test Method for Through Penetration Firestopping.
 • ASTM E119 (UL 263) Standard for fire tests of Building Construction and Materials.

The above described assembly and products have been tested and are listed in both past and anticipated performance criteria. Tremco shall not be liable for any damages, direct or consequential, resulting from use of this material or design. Tremco shall only be responsible for replacing material found to be defective.

Project: _____
 Location: _____
 Installer: _____
 Signature: _____
 Date: 2/26/94 | Drawing: TR-1047
 Approved By: C. Tuzzo

SECTION A-A

NOTES

1A. METAL STUDS MIN. 2X4 IN. NOMINAL AT A MAX. 16 IN. ON CENTER OR STEEL STUDS MIN. 2X3 IN. NOMINAL AT A MAX. 24 IN. ON CENTER.

1B. ONE LAYER OF GYPSUM WALLBOARD CAPABLE OF PROVIDING A 1 HR. F RATING OR TWO LAYERS OF GYPSUM WALLBOARD CAPABLE OF PROVIDING A 2 HR. F RATING. MAX. DIAMETER OF PENETRANT OPENING FOR STEEL FRAMING IS 24-5/8 IN. AND A MAX. DIAMETER OF PENETRANT OPENING FOR WOOD FRAMING IS 14-1/2 IN.

2A. ONE OF THE FOLLOWING MAY BE USED:
 1. MAX. 24 IN. STEEL PIPE.
 2. MAX. 24 IN. IRON PIPE.
 3. MAX. 6 IN. STEEL CONDUIT OR MAX. 4 IN. E.T.M.
 4. MAX. 6 IN. COPPER PIPE OR TUBING.

3A. MINERAL WOOD BACKING (4 PCF) FILLED TO DEPTH OF WALL SPACE.

3B. APPLY FS 1900 INTO ANNULAR SPACE TO A DEPTH OF 1/4 IN. FOR A 1 HOUR ASSEMBLY ADD A 1/2 IN. CROWN AND OVERLAP THE WALLBOARD 1/4 IN. FOR A 2 HR. ASSEMBLY ADD A 1/4 IN. CROWN AND OVERLAP THE WALLBOARD 1/4 IN.

FLAMESAFE FS 1900 SERIES SEALANT
 1 OR 2 HOUR (U.L. LISTED F & T RATING EQUAL)
 WL1089

**CHAMPLAIN TOWERS
SOUTH CONDOMINIUM**
8777 COLLINS AVENUE
SURFSIDE, FLORIDA 33154

**CHAMPLAIN TOWERS SOUTH 40-YEAR BUILDING
REPAIR & RESTORATION**
**PHASE IIC: OVERALL BUILDING
REPAIR AND RESTORATION**

SEA: _____
 Henry A. Vidal, P.E.
 P.E. #65048



No.	Date	Revisions

DESIGNED	G.V./H.O.	DRAWN	G.V./H.O.
CHECKED	H.V.	APPROVED	H.V.

Project No.: 18217
 Date: 04-01-2021
 Scale: AS SHOWN
 Sheet Title: ELECTRICAL DETAILS

H. VIDAL & ASSOCIATES

CONSULTING ENGINEERS
 241 N.W. SOUTH RIVER DRIVE
 MIAMI, FL 33129
 HENRY VIDAL, P.E. #E-49504
 CERTIFICATION OF AUTHORIZATION #9696
 PHONE: (305) 571-1880 FAX: (305) 571-1881
 INFO@HVALENGINEERING.COM
 VIDALENGINEERING.COM

Sheet No.: **E-9**

GENERAL NOTES

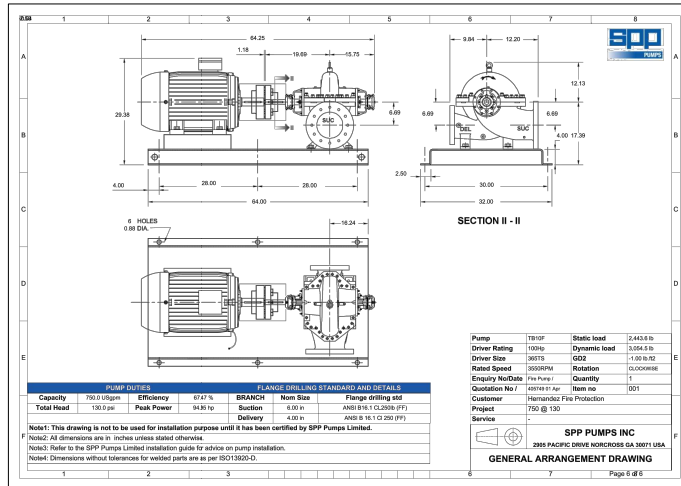
- FIRE PROTECTION MATERIALS, DESIGNS & HYDRAULIC CALCULATIONS SHALL COMPLY WITH APPLICABLE CODES AND STANDARDS. ALL DRAWINGS ILLUSTRATING FIRE PROTECTION SHALL COMPLY TO NFPA 13, 14, 20, 24, THE FLORIDA STATE FIRE PREVENTION CODE, AND THE AUTHORITY HAVING JURISDICTION'S (AHJ) MINIMUM REQUIREMENTS FOR INSTALLING FIRE SPRINKLER SYSTEMS REFER TO APPLICABLE CODES (THIS SHEET FOR ANY SPECIAL CONDITIONS AND/OR ADDITIONAL REQUIREMENTS THAT SHALL BE CONSIDERED).
- CONTRACTOR SUBMITTAL PACKAGE SHALL BE SUBMITTED, COORDINATED AND APPROVED BY THE ARCHITECT/ENGINEER OF RECORD, PRIOR TO SUBMITTING SHOP DRAWINGS, HYDRAULIC CALCULATIONS, & EQUIPMENT DATA SHEETS TO THE AHJ FOR FINAL APPROVAL PERMITTING PURPOSES.
- AFTER AS BUILTS ARE APPROVED BY THE ENGINEER OF RECORD, THE CONTRACTOR SHALL RECEIVE CONTRACT CONFIRMATION COMPLIANCE DOCUMENTATION. THE CONTRACTOR SHALL ASSUME FULL RESPONSIBILITY BY PROVIDING THE ENGINEER/ARCHITECT OF RECORD AN ADDITIONAL COMPLETE SET OF SHOP DRAWINGS MODIFIED SHOP DRAWINGS OR AS BUILTS AND HYDRAULIC CALCULATIONS INCLUDING ANY AND ALL ADDITIONAL FITTINGS THAT MAY BE ADDED DUE TO COORDINATION ISSUES.
- PIPE ROUTING SHOWN IS FOR INFORMATION ONLY. IT IS THE RESPONSIBILITY OF THIS CONTRACTOR TO PROVIDE ANY ADDITIONAL MODIFICATIONS TO THE EXISTING FIRE SPRINKLER SYSTEM AND HYDRAULIC CALCULATIONS, AS REQUIRED FOR COMPLIANT MATERIAL INSTALLATION AND COORDINATION WITH OTHER TRADES.
- PIPING IN AREAS WITH EXPOSED STRUCTURE SHALL BE INSTALLED AS HIGH AS POSSIBLE TO ALLOW THE OWNER MAXIMUM USE OF THE SPACE.
- CONTRACTOR SHALL SLEEVE AND/OR FIRESTOP ALL PENETRATIONS THROUGH RATED WALLS, CEILING AND FLOORS WITH UL LISTED ASSEMBLIES. FIRESTOP ASSEMBLIES SHALL BE EQUAL OR EXCEED THE RATING OF THE WALL, CEILING OR FLOOR.

APPLICABLE CODES AND STANDARDS

FLORIDA ADMINISTRATIVE CODE 61015-32.003 A-M (LATEST REVISION)
 FLORIDA BUILDING CODE
 NFPA 1
 NFPA 13 (2013 EDITION)
 NFPA 14 (2013 EDITION)
 NFPA 24 (2013 EDITION)

SCOPE OF WORK

PROJECT CONSIST IN REPLACING THE EXISTING FIRE PUMP WITH A NEW ELECTRIC FIRE PUMP THAT MEETS NEW CODE REQUIREMENTS. NEW PUMP SHALL BE 750 GPM @ 130 PSI WITH TRANSFER SWITCH. VOLTAGE SHALL BE PHASE. CONTRACTOR SHALL SUBMIT FIRE PUMP AND CONTROLS SPECS PRIOR CITY PERMIT SUBMITTAL. INSTALL NEW PRESSURE REDUCING VALVES WHERE PRESSURE EXCEEDS 175 PSI. INSTALL NEW BACKFLOW PREVENTER TO MEET NEW CODE REQUIREMENTS.



SPP Pumps Inc

Pump Performance Datasheet

Customer	Hernandez Fire Protection	Quote number	400749
Customer enquiry	Fire Pump	Pump Size	1T810P
Item number	.001	Item Number	-
Shape - Tailor	-	Based on curve number	1T810P Row 1
Quantity	1	Date last saved	01 Apr 2021 11:26

Operating conditions

Flow, rated 750.0 USGpm Liquid Type Application Water
 Differential Head (requested) 130.0 psi Additional liquid description -
 Suction pressure, rated / max 100.00 / 60.00 psi.g Temperature, max -
 NPSH available, rated 4.00 ft Fluid density, rated / max 1.000 / 1.000 SG
 NPSH available, max 4.00 ft Viscosity, rated 1.00 cP
 Site Supply Frequency 60 Hz

NFPA 13 Data

Flow, rated 750.0 USGpm Speed, rated 3600 rpm
 Head, rated 150.2 psi Impeller diameter, rated (approx.) 19.29 in.
 Power, rated 84.44 hp Impeller diameter, maximum 10.00 in.
 NPSH3 req'd - Impeller diameter, minimum 7.87 in.
 Efficiency, rated 67.47 % Efficiency 67.47 %
 Flow at 100% 11,025.0 USGpm NPSH3 required / margin required - / 10.00 ft
 Head at 100% 109.5 psi Head, maximum, rated diameter 155.4 psi
 Efficiency at 100% - (approx.) - 92.91 %
 Diameter ratio (rated / max) - - - - -

Power & Power (SH) (1/HP)

Power required at 100% flow 92.48 hp Power, Hydraulic 26.97 hp
 Peak power 98.60 hp Power, rated 84.44 hp
 Closed valve pressure 181.4 psi.g Power, maximum, rated diameter 84.95 hp
 140% Head at 100% flow 182.3 psi.g
 65% Head at 150% flow 84.65 psi.g
 Cooling flow (none) 0.00 USGpm

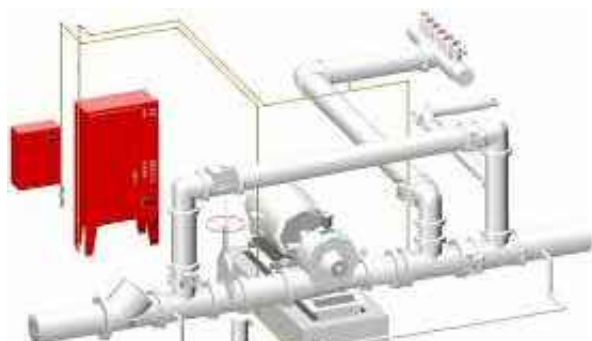
Pressure Data

Maximum working pressure 191.4 psi.g FMUL/UL approved - FMUL
 Maximum allowable working pressure 282.0 psi.g Near max reasons -
 Maximum allowable suction pressure 78.00 psi.g
 Hydraulic test pressure 287.1 psi.g

Material selected - CI / E / CS (Standard)

Flow vs. Head and Power vs. Flow Graphs

SPP Pumps Inc - 2908 Pacific Drive - Norcross - Georgia 30071
 Phone: +1(770) 439-3226 - Website: http://www.spppumps.com Page 4 of 6
 Version: 21.0.0

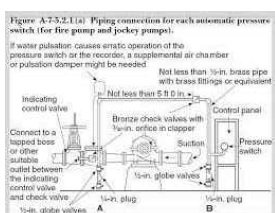
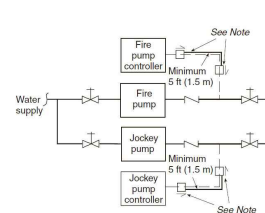


HANGER SCHEDULE

NON-INSULATED PIPE CODE

STEEL PIPE EXCEPT THREADED	1/4"	1/2"	3/4"	1"	1 1/2"	2"	3"	4"	6"	8"
IMPERMEABLE	N/A	N/A	N/A	N/A	N/A	N/A	N/A	N/A	N/A	N/A
PERMEABLE	N/A	N/A	N/A	N/A	N/A	N/A	N/A	N/A	N/A	N/A
COPPER PIPE	2-4	3-4	3-4	3-4	3-4	3-4	3-4	3-4	3-4	3-4
CPVC	N/A	N/A	N/A	N/A	N/A	N/A	N/A	N/A	N/A	N/A
POLYBUTYLENE (PBT)	N/A	N/A	N/A	N/A	N/A	N/A	N/A	N/A	N/A	N/A
POLYBUTYLENE (PBT)	2-3	3-4	3-4	3-4	3-4	3-4	3-4	3-4	3-4	3-4
DUCTILE IRON PIPE	N/A	N/A	N/A	N/A	N/A	N/A	N/A	N/A	N/A	N/A

FIGURE A.7.5.2.1 (a)



WATER SUPPLY INFORMATION

STATIC	56
RESIDUAL	45
FLOW	1500
LOCATION	
TEST BY	
TIME	10:00 AM
DATE	

SPRINKLER CONTRACTOR TO REQUEST NEW FLOW TEST

CONSULTING ENGINEERS
 241 N.W. SOUTH RIVER DRIVE
 MIAMI, FL 33128
 CERTIFICATION OF AUTHORIZATION #9086
 PHONE: (305) 571-1880 FAX: (305) 571-1881
 INFO@HVIDALENGINEERING.COM
H.VIDAL
 A ASSOCIATES
 VIDALEENGINEERING.COM

CHAMPLAIN TOWERS SOUTH CONDOMINIUM
 8777 COLLINS AVENUE
 SURFSIDE, FLORIDA 33154

CHAMPLAIN TOWERS SOUTH 40-YEAR BUILDING
 REPAIR & RESTORATION
 PHASE 1C: OVERALL BUILDING
 REPAIR AND RESTORATION

DESIGNED: G.V./H.O.
 CHECKED: H.V.
 DRAWN: G.V./H.O.
 APPROVED: H.V.

Project No.: 18217
 Date: 04-01-2021
 Scale: AS SHOWN
 Sheet Title: FIRE PROTECTION NOTES, SCHEDULES AND DETAILS

Sheet No.: FP-1

FIRE SPRINKLER CONTRACTOR SHALL
 SUBMIT SHOP DRAWINGS FOR APPROVAL AND PERMITTING



**CHAMPLAIN TOWERS
SOUTH CONDOMINIUM**
8777 COLLINS AVENUE
SURFSIDE, FLORIDA 33154

**CHAMPLAIN TOWERS SOUTH 40-YEAR BUILDING
REPAIR & RESTORATION**
**PHASE IIC: OVERALL BUILDING
REPAIR AND RESTORATION**

SEA License 090000
Expire 09/09/26

**PRELIMINARY
NOT FOR
CONSTRUCTION**

**morabito
consultants**
Structural Engineers | Remediation & Parking Consultants
200 N. Gordon Way, Palm Beach Gardens, FL 33418
Tel: 561-960-1100 | www.morabitoconsultants.com
© Copyright Morabito Consultants, Inc.

No.	Date	Revisions

DESIGNED	EC	DRAWN	EC
CHECKED	RJM	APPROVED	FPM

Project No.: 18217

Date: 11/03/2020

Scale: 3/32" = 1'-0"

Sheet Title:
FIRST FLOOR PLAN - FIRE PROTECTION

Sheet No.:
FP-2

FIRST FLOOR PARKING PLAN - FIRE PROTECTION
SCALE: 3/32"=1'-0"

**H. VIDAL
& ASSOCIATES**
CONSULTING ENGINEERS
241 N.W. SOUTH RIVER DRIVE
WEST PALM BEACH, FL 33411
CERTIFICATION OF AUTHORIZATION #9266
PHONE (561) 571-1880 FAX (561) 571-1881
INFO@HVIDALENGINEERING.COM
VIDALENGINEERING.COM