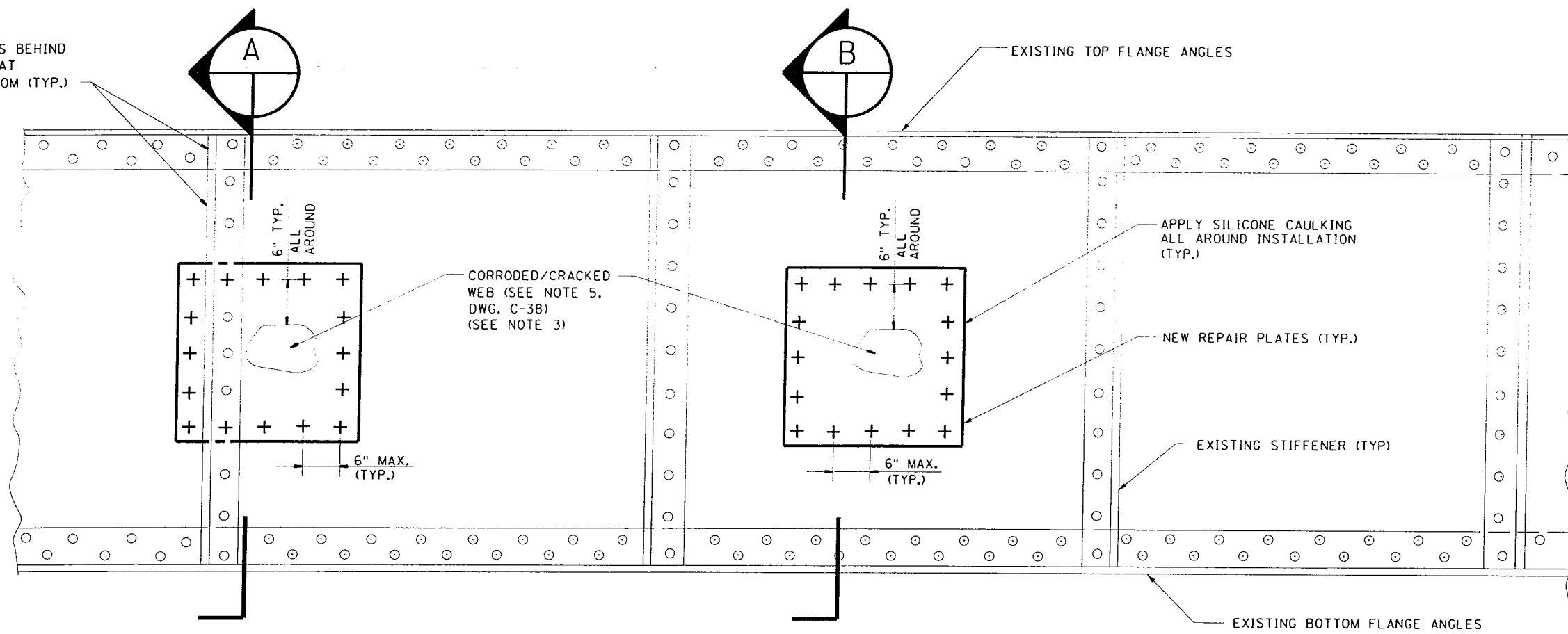
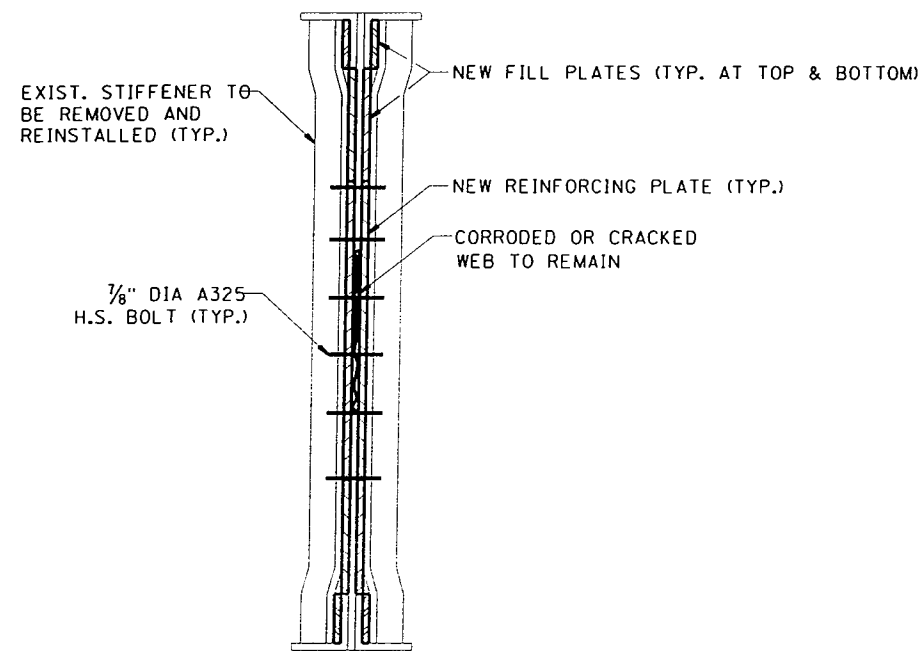


FILL PLATES BEHIND STIFFENER AT TOP & BOTTOM (TYP.)



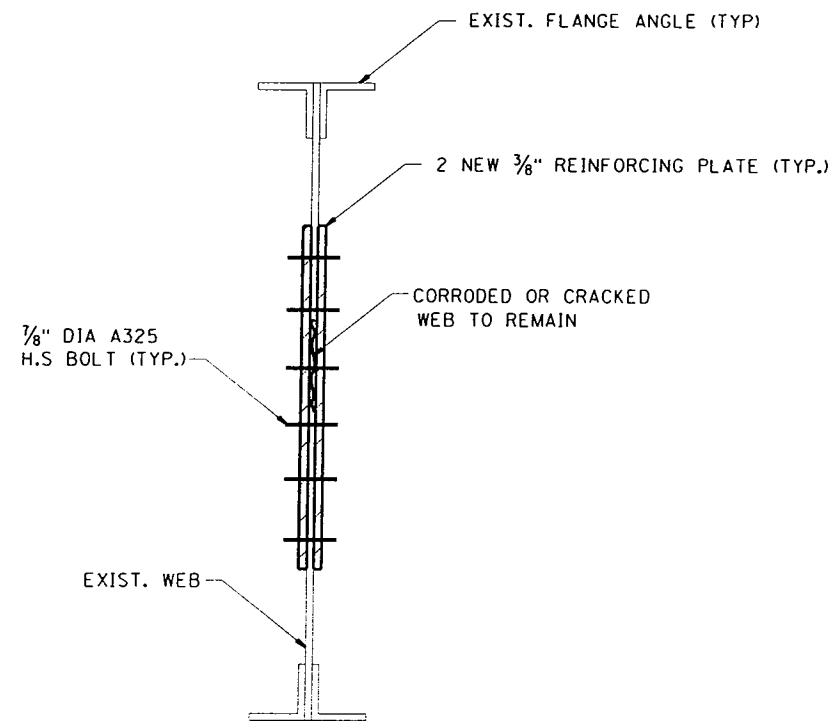
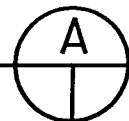
TYPICAL WEB REPAIR DETAIL (WEB)

N.T.S



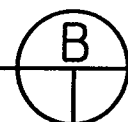
SECTION A

N.T.S




SECTION B

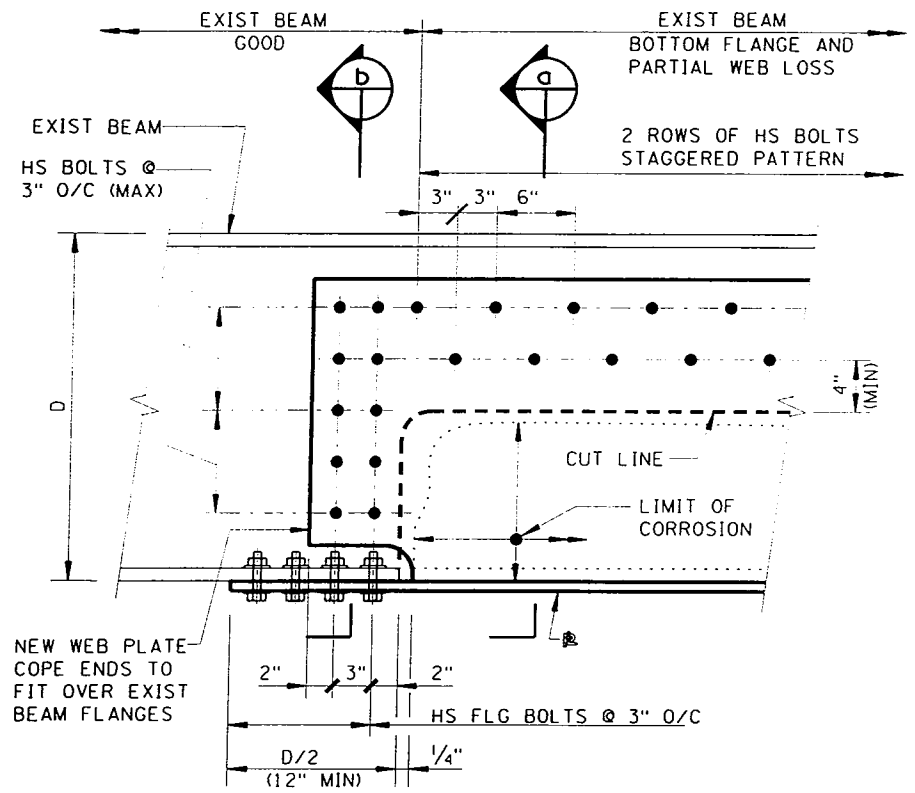
N.T.S



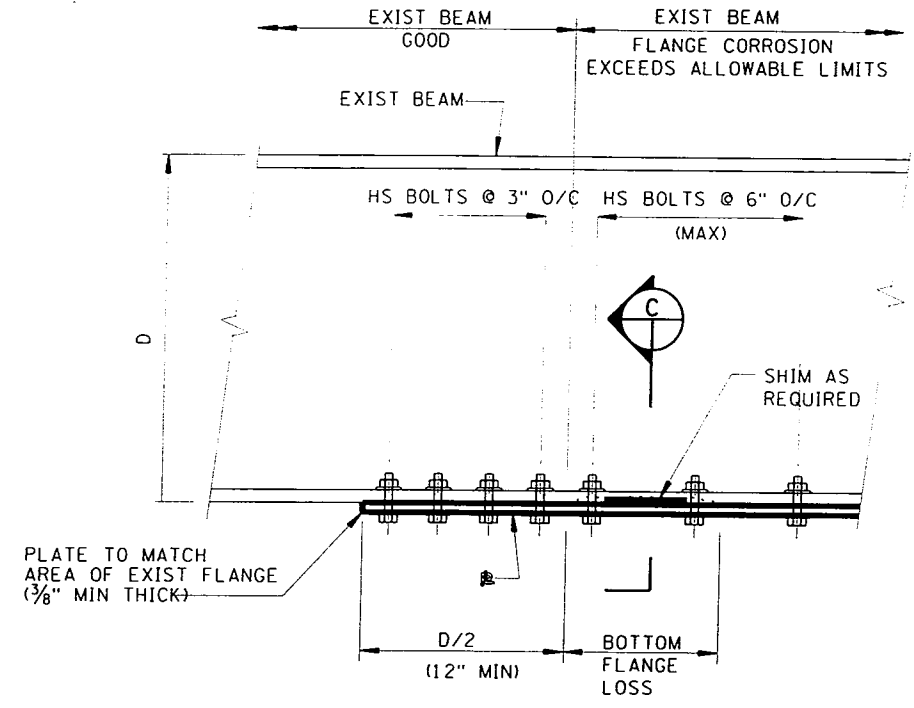
NOTES:

1. IF REQUIRED, REMOVE EXISTING STIFFENERS AND REINSTALL AFTER WEB REPAIR WORK IS COMPLETED. PROVIDE FILL PLATES AS NECESSARY.
2. FOR THE CRACKED WEB, WELD THE CRACK AND GRIND SMOOTH BEFORE INSTALLATION OF NEW REINFORCING PLATES.
3. PROVIDE STITCH BOLTS AT 9" O.C., E.W. WITHIN CORRODED AREA.

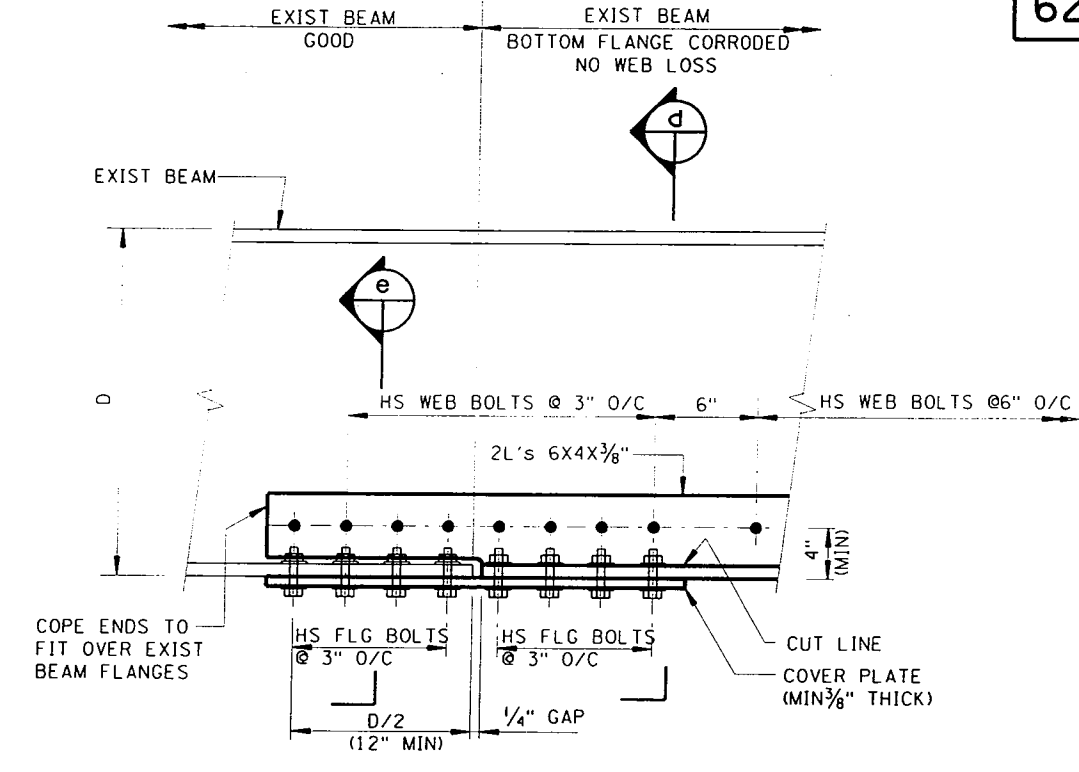
REVISION	DESCRIPTION	DATE	APPROVED
 New York City Transit Authority DEPARTMENT OF CAPITAL PROGRAM MANAGEMENT CIVIL/STRUCTURAL ENGINEERING			
REFERENCE DRAWING			
TRACK, PLATFORM AND CROSS GIRDERS			
WEB REPAIR DETAILS			
DRAWN BY		DATE :	
DESIGNED BY		DRAWING NO. RC-1015	
CHECKED BY		RC-2516	
APPROVED BY		REVISION	



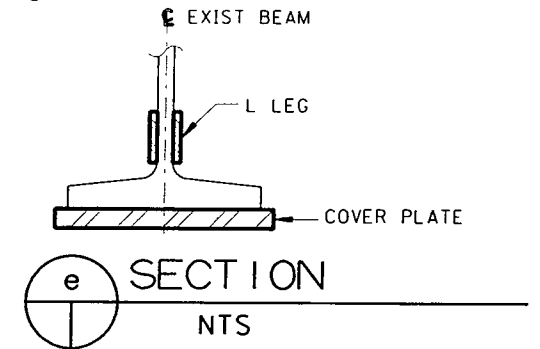
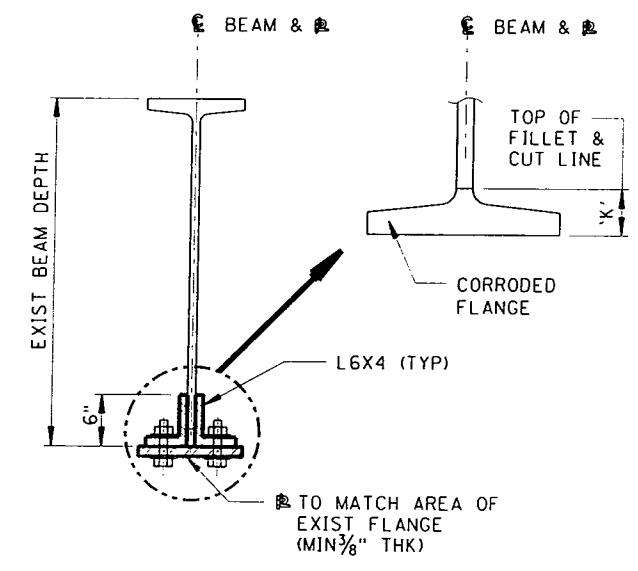
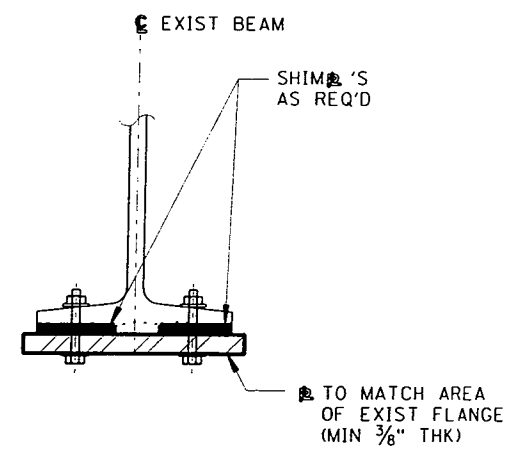
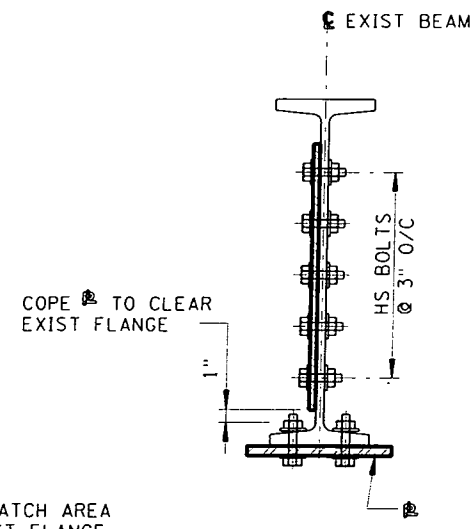
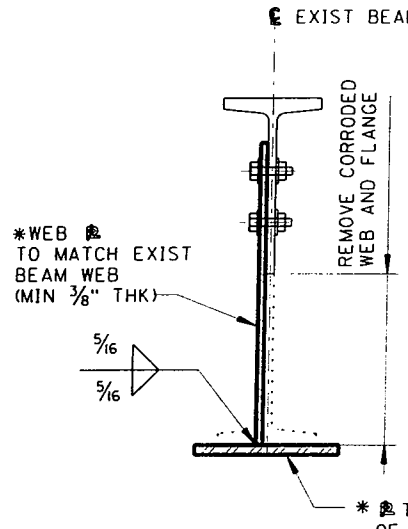
LOSS OF BEAM FLANGE AND PORTION OF WEB (ROLLED SECTION)
DETAIL S1
 NTS



LOSS OF FLANGE THICKNESS (ROLLED SECTION)
 (DETAIL SIMILAR FOR CHANNELS)
DETAIL S2
 NTS



FLANGE REPLACEMENT WEB INTACT (ROLLED SECTION)
DETAIL S3
 NTS



NOTES:
 * CAN REPLACE WITH TEE SECTION CUT FROM W SECTION

NOTES:
 1. FOR NOTES SEE DWG C-1017 & C-1018
 2. DETAILS SHOWN ARE SIMILAR FOR REPAIRS TO TOP FLANGES.

a SECTION
 NTS

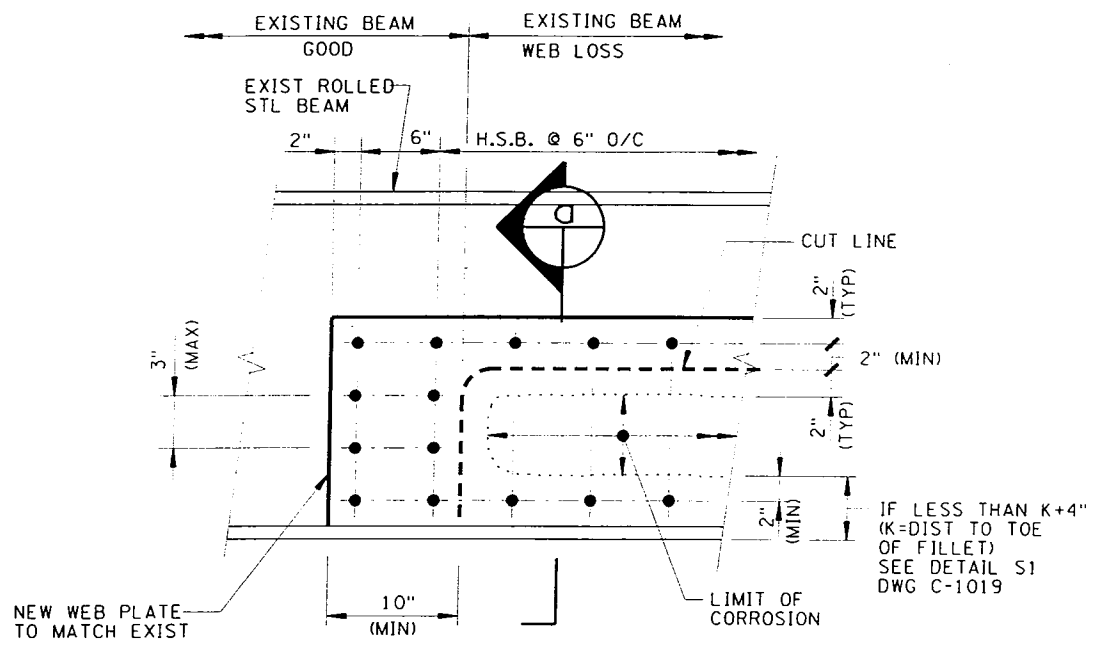
b SECTION
 NTS

c SECTION
 NTS

d SECTION
 NTS

e SECTION
 NTS

0	CONFORMED DRAWING	12/12/08	
REVISION	DESCRIPTION	DATE	APPROVED
New York City Transit Authority DEPARTMENT OF CAPITAL PROGRAM MANAGEMENT STRUCTURAL ENGINEERING		COMMON DETAILS CONTRACTS A-36018, A-36019, A-36020, A-36021, A-36022 REHABILITATION OF 5 STATIONS ON THE FAR ROCKAWAY LINE (IND), BOROUGH OF QUEENS TYPICAL BEAM REPAIR DETAILS SHEET 1 OF 3	
DRAWN BY	G. ESTROPIA	SIGNED	DATE: APRIL 25, 2008
DESIGNED BY	G. ESTROPIA	SIGNED	DRAWING NO.
CHECKED BY	P. ZHU P.E.	SIGNED	RC-2518
APPROVED BY	H. LAKHANI P.E.	SIGNED	REVISION 0

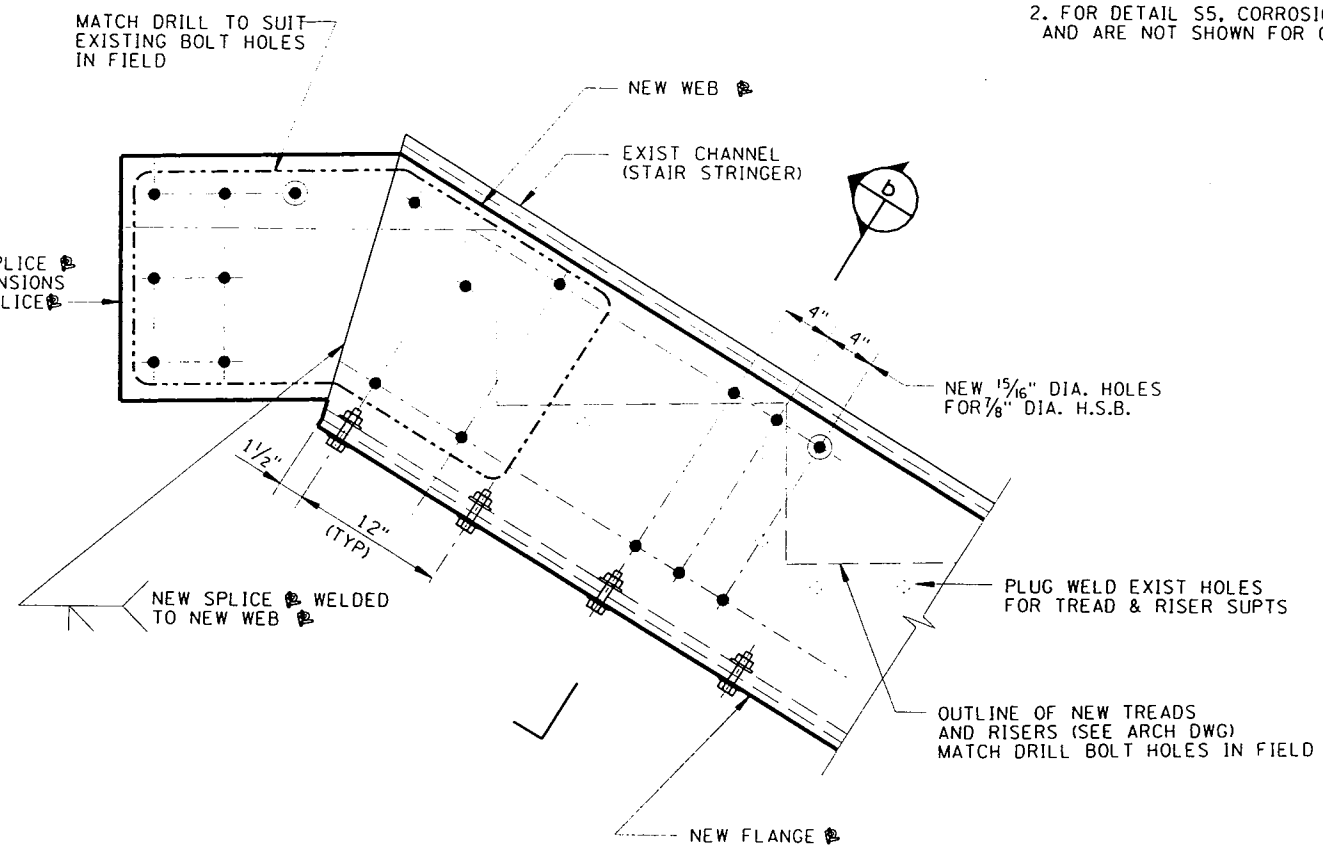


LOSS OF MIDDLE OF WEB, FLANGE INTACT (ROLLED SECTION)

(DETAIL SIMILAR FOR CHANNELS)

DETAIL S4

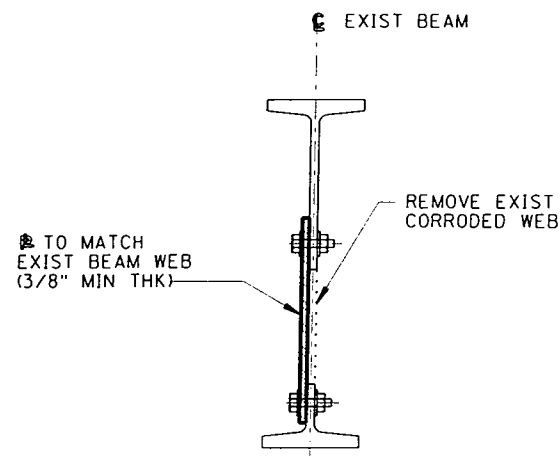
NTS



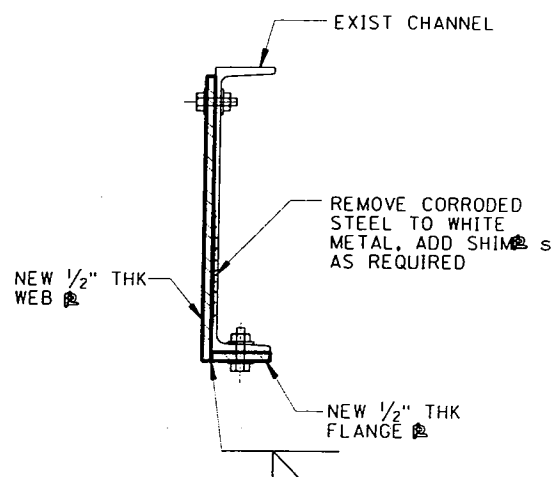
PARTIAL LOSS OF CHANNEL FLANGE & PORTION OF WEB (DETAIL TO ADDRESS THE REPAIR OF STAIR STRINGER)

DETAIL S5

NTS



SECTION a
NTS



SECTION b
NTS

NOTES

1. FOR NOTES SEE DWG C-1017 & C1018.
2. FOR DETAIL S5, CORROSION LIMITS OF EXISTING STRINGER VARY AND ARE NOT SHOWN FOR CLARITY.

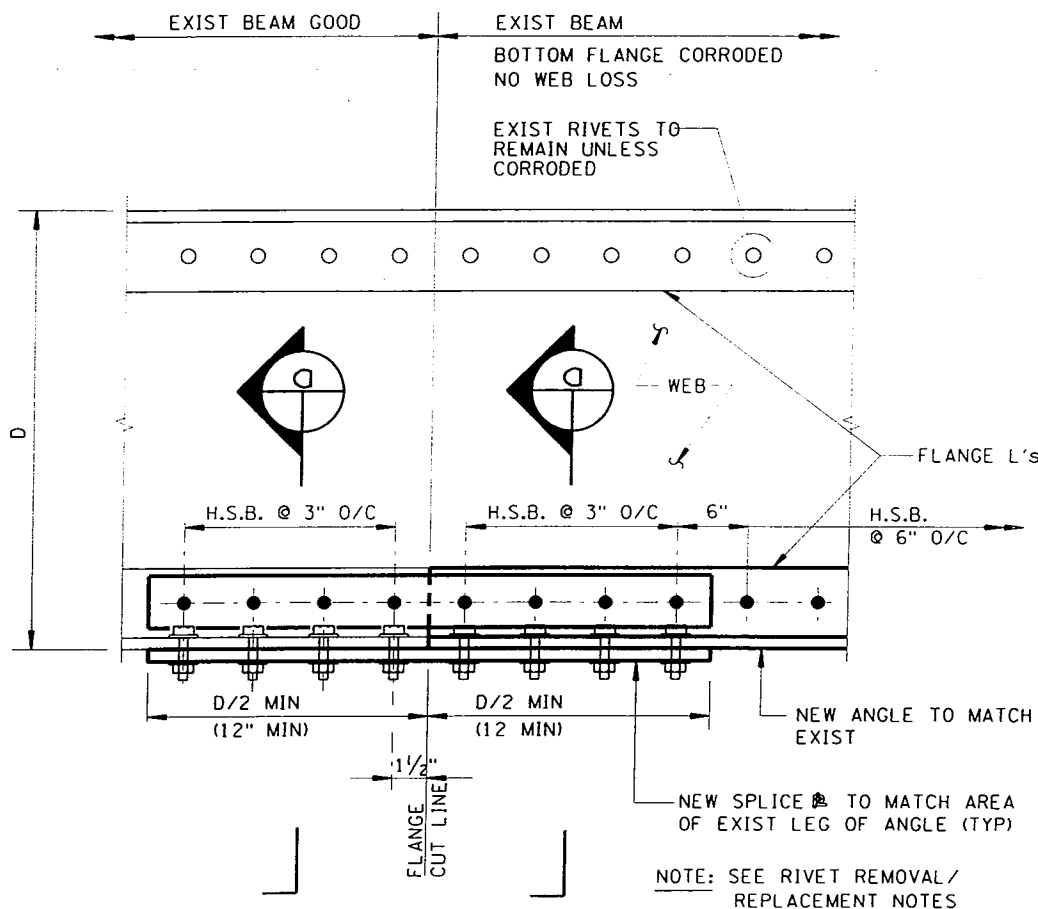
REVISION	DESCRIPTION	DATE	APPROVED
0	CONFORMED DRAWING	12/12/08	

New York City Transit Authority
DEPARTMENT OF CAPITAL PROGRAM MANAGEMENT
STRUCTURAL ENGINEERING

COMMON DETAILS
CONTRACTS A-36018, A-36019, A-36020, A-36021, A-36022
REHABILITATION OF 5 STATIONS ON THE FAR ROCKAWAY LINE (IND), BOROUGH OF QUEENS

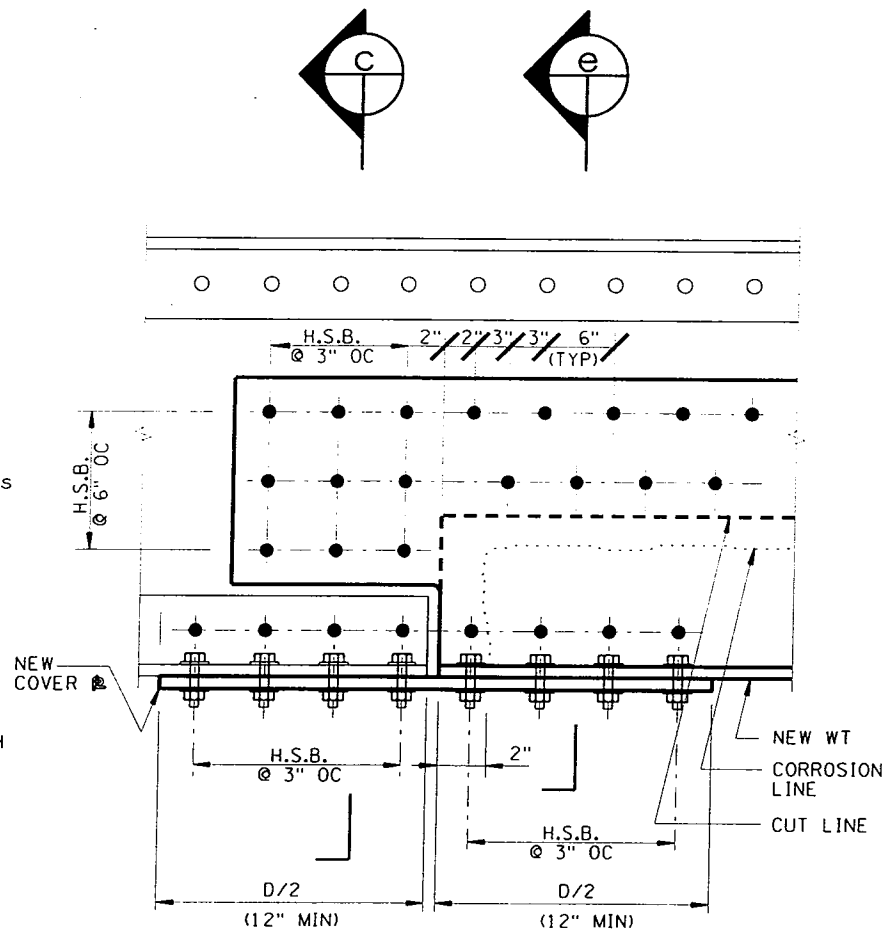
TYPICAL BEAM REPAIR DETAILS
SHEET 2 OF 3

DRAWN BY	G. ESTROPIA	SIGNED	DATE: APRIL 25, 2001
DESIGNED BY	G. ESTROPIA	SIGNED	DRAWING NO.
CHECKED BY	P. ZHU P.E.	SIGNED	RC-2519
APPROVED BY	H. LAKHANI P.E.	SIGNED	
			REVISION 0



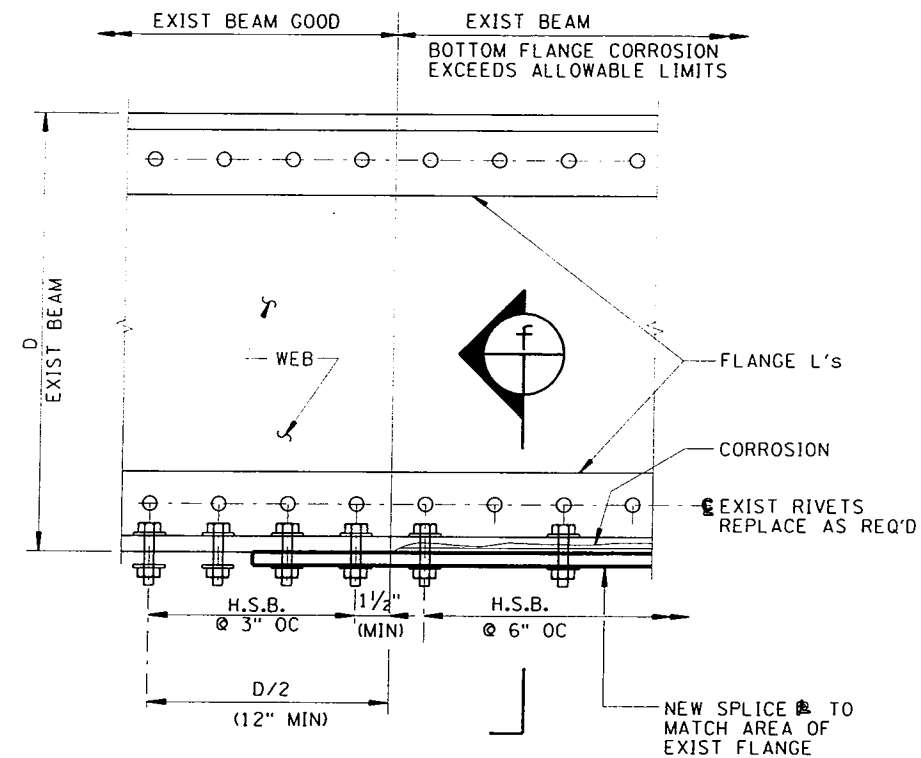
LOSS OF BUILT-UP BEAM FLANGE, WEB INTACT
(BUILT-UP SECTION)

DETAIL S6
NTS



LOSS OF BEAM FLANGE & PARTIAL WEB LOSS
(BUILT-UP SECTION)

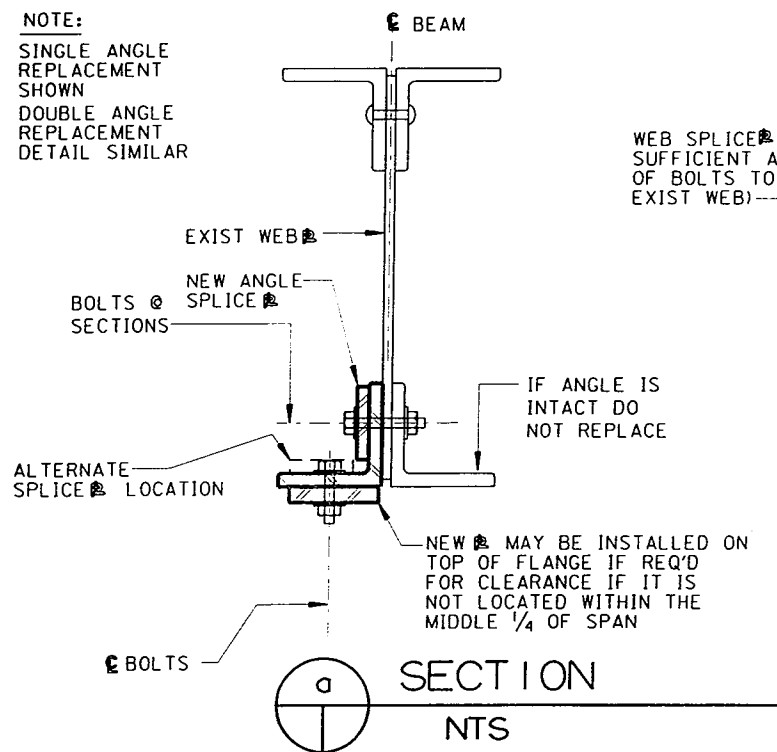
DETAIL S7
NTS



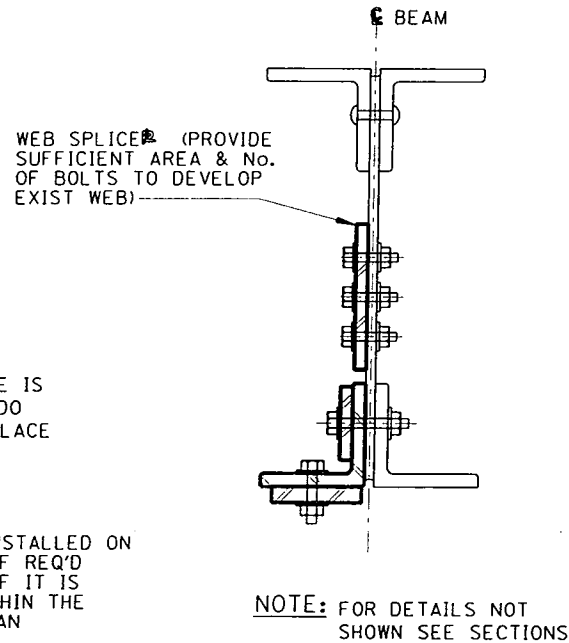
LOSS OF BUILT-UP BEAM FLANGE THICKNESS
(BUILT-UP SECTION)

DETAIL S8
NTS

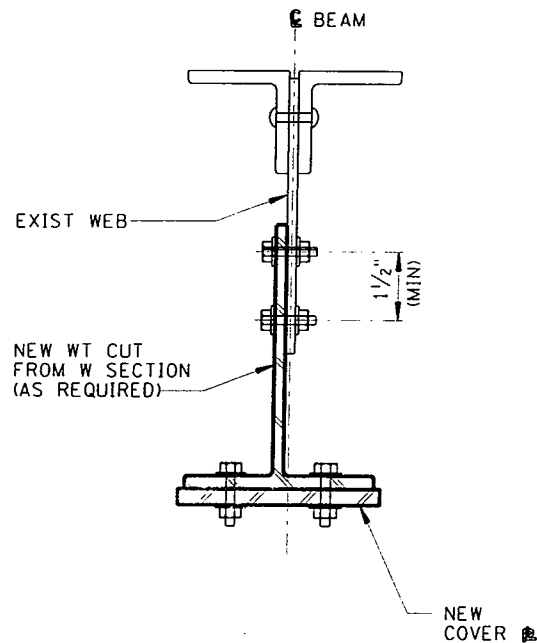
NOTE:
SINGLE ANGLE REPLACEMENT SHOWN
DOUBLE ANGLE REPLACEMENT DETAIL SIMILAR



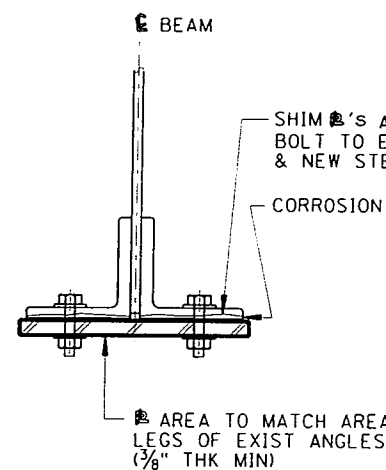
SECTION
NTS



SECTION
NTS



SECTION
NTS



SECTION
NTS

NOTES

1. FOR NOTES SEE C-1017 & C-1018

0	CONFORMED DRAWING	12/12/08
REVISION	DESCRIPTION	DATE APPROVED
New York City Transit Authority DEPARTMENT OF CAPITAL PROGRAM MANAGEMENT STRUCTURAL ENGINEERING		COMMON DETAILS CONTRACTS A-36018, A-36019, A-36020, A-36021, A-36022 REHABILITATION OF 5 STATIONS ON THE FAR ROCKAWAY LINE (IND), BOROUGH OF QUEENS TYPICAL BEAM REPAIR DETAILS SHEET 3 OF 3
DRAWN BY	G. ESTROPIA	SIGNED
DESIGNED BY	G. ESTROPIA	SIGNED
CHECKED BY	P. ZHU P.E.	SIGNED
APPROVED BY	H. LAKHANI P.E.	SIGNED
		DATE: APRIL 25, 2001
		DRAWING NO. RC-2520
		REVISION