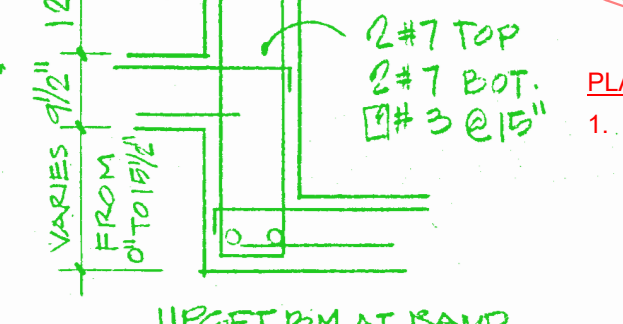
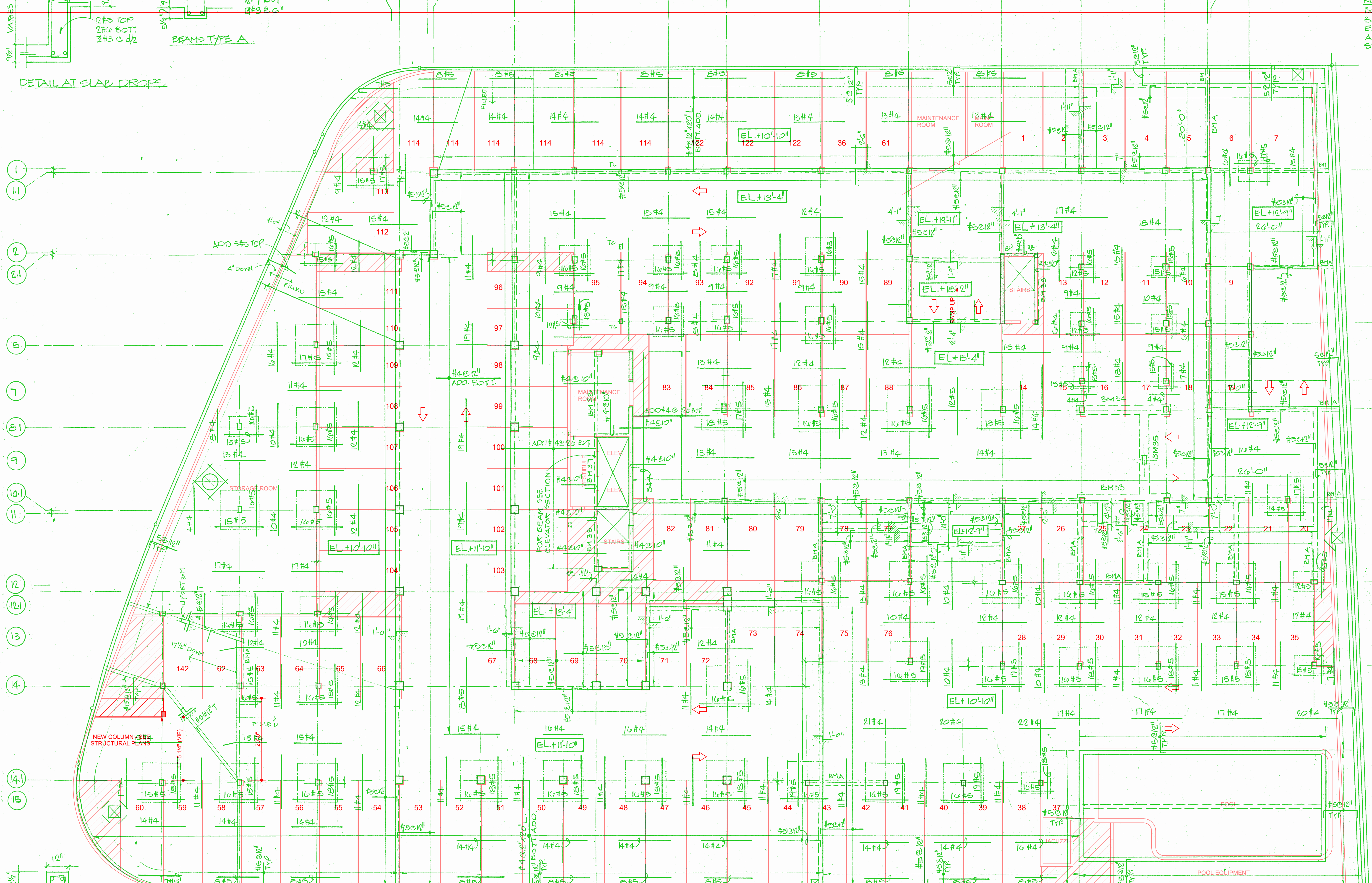


NOTE: BOTTOM REIN. SHALL BE #4@12" BOTTOM EACH WAY IN ADDITION TO ANY INDICATED BOTTOM STEEL.

DETAIL AT SLAB DROPS



PLAN NOTES

- EXISTING BUILDING FRAMING AND CONDITIONS INDICATED ON PLAN ARE BASED ON EXISTING DRAWINGS PREPARED BY WILLIAM M. FRIEDMAN & ASSOCIATES ARCHITECTS, INC AND BREITERMAN JUARDO & ASSOCIATES, DATED 08-22-1979 AND A LIMITED FIELD INVESTIGATION CONDUCTED BY MORABITO CONSULTANTS. CONTRACTOR SHALL VERIFY ALL EXISTING CONDITIONS AND CONTACT MORABITO CONSULTANTS PRIOR TO CONSTRUCTION IF CONDITIONS VARY FROM WHAT IS SHOWN ON PLAN.
- EXISTING STRUCTURE CONSISTS OF CAST-IN-PLACE CONCRETE TWO-WAY FLAT PLATE ELEVATED FLOOR SLABS BEARING ON CAST-IN-PLACE CONCRETE COLUMNS OVER A FRAMED CONCRETE SLAB ON GRADE SUPPORTED BY PILE CAPS.
- EXISTING ELEVATION TOP OF STRUCTURAL SLAB VARIES.
- EXISTING CONDITIONS ARE SHOWN HALF-TONE.

- ALL STRIPING SHALL BE 4" IN WIDTH.
- ALL NON-PARKING AREAS SHALL HAVE 4" WIDE PAINTED STRIPING AT 1'-6" o.c.
- ALL STRIPING FOR THE STANDARD STALLS AND ASSOCIATED NON-PARKING AREAS SHOULD BE YELLOW.
- ALL STRIPING FOR THE HANDICAP STALLS AND ASSOCIATED NON-PARKING AREAS SHOULD BE SKY BLUE. THE HANDICAP FIGURE SHOULD BE WHITE WITH A SKY-BLUE BACKGROUND.
- PARKING SPACE NUMBERING IN 6" LETTERING TO END OF PARKING SPACE AND ON COLUMN ADJACENT TO SPACE PER PAINT SPECIFICATION SECTION 09 9120. PARKING SPACE NUMBERING AS NOTED ON THIS SHEET.
- APPLY SILANE SEALER TO ALL CONCRETE SLAB ON GRADE AREAS. SEE SPECIFICATION 03 0100.

LOBBY LEVEL FRAMING PLAN  
SCALE: 3/32" = 1'-0"

**BREITERMAN JUARDO & ASSOCIATES**  
CONSULTING ENGINEERS  
420 SOUTH DIXIE HIGHWAY CORAL GABLES FLORIDA 33146

**MORABITO CONSULTANTS**  
Structural Engineers | Remediation & Parking Consultants  
208 Via Condo Way | Palm Beach Gardens, FL 33418  
561.316.7860 | www.morabitoconsultants.com  
© Copyright Morabito Consultants, Inc.

No.	Date	Revisions

DESIGNED: HR/JB/RM DRAWN: HR/JB/RM  
CHECKED: RM APPROVED: FPM

Project No.: 18217  
Date: 04/26/21  
Scale: 3/32" = 1'-0"  
Sheet Title: CHAMPLAIN TOWERS SOUTH CONDOMINIUM  
SHEET: 65

CHAMPLAIN TOWERS SOUTH CONDOMINIUM  
8777 COLLINS AVENUE  
SUBSIDIE, FLORIDA 33154

CHAMPLAIN TOWERS SOUTH 40-YEAR BUILDING REPAIR & RESTORATION  
PHASE IIC: OVERALL BUILDING REPAIR AND RESTORATION

Sheet No.: A2C-0.5