

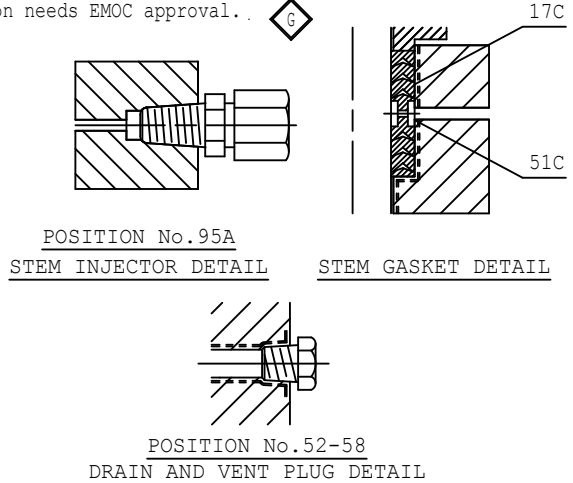
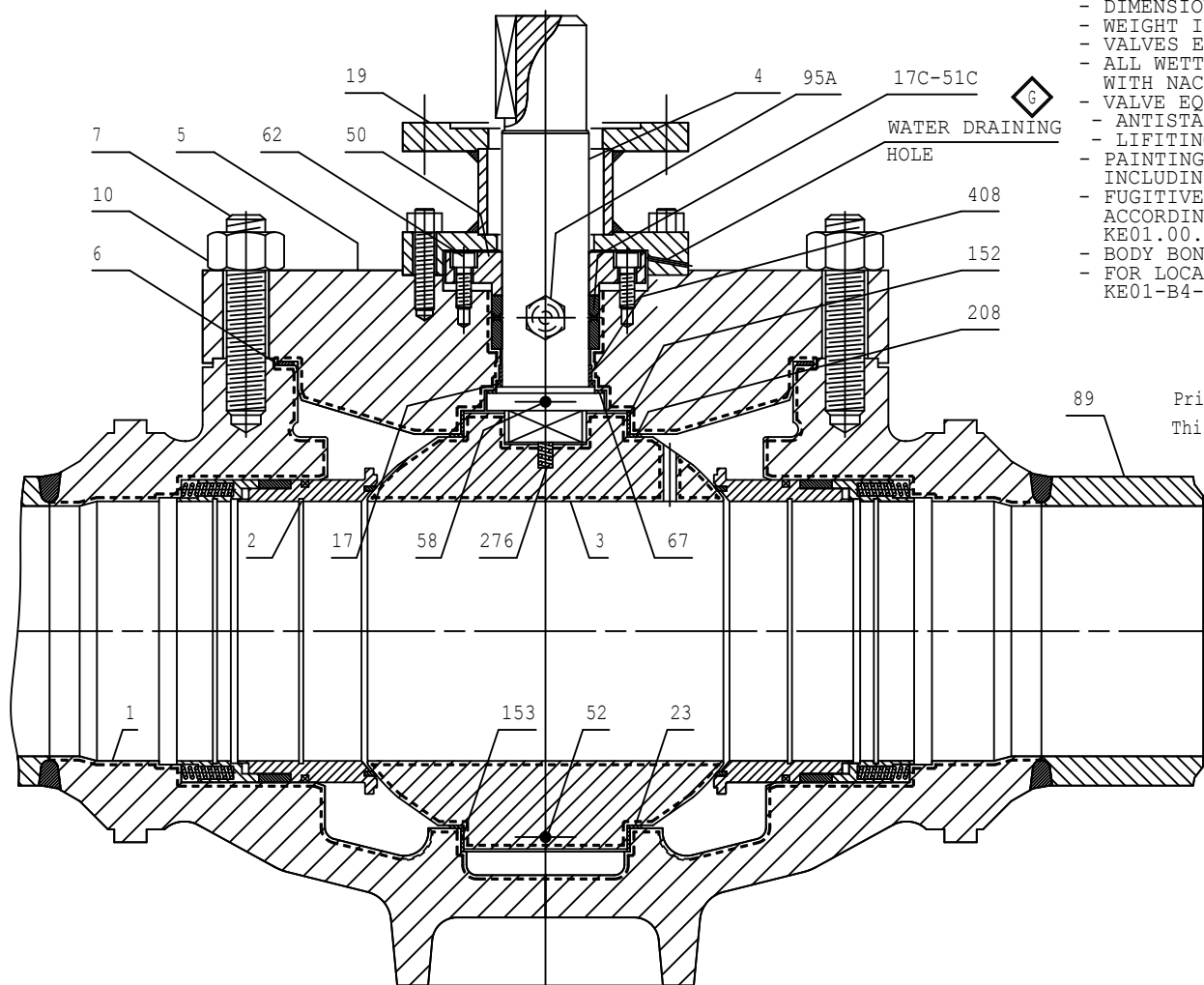
ALL RIGHTS OF THIS DRAWING ARE RESERVED OUT OF SCALE DRAWING

GENERAL NOTES :

- DIMENSIONS IN mm.
- WEIGHT IN Kg. APPROX.
- VALVES ENDS "BW" TYPE AS PER ASME B16.25
- ALL WETTED PARTS AND BOLT IN ACCORDANCE WITH NACE MR-01-75 ED.2003
- VALVE EQUIPPED WITH:
 - ANTISTATIC DESIGN
 - LIFTING LUG
 - PAINTING SYSTEM - 3B FOR ALL VALVE COMPONENTS INCLUDING BOLT
 - FUGITIVE EMISSION REQUIREMENTS ACCORDING TO APPENDIX G OF CLIENT SPEC. KE01.00.000.KD.P.ST.0014.000
 - BODY BONNET NUT HEAVY HEX WITH SUPPLEMENTARY REQUIREMENTS S3 FOR LOCAL CONTROL PANEL REF. DRW. KE01-B4-PAAI53A-B01-0002-001 (REMOTE MOUNTING)

- UNS N06625 WELDING OVERLAY (FULLY CLADDED)

Prior to implementing OPTION B mechanical/PACO TA to be consulted. This option needs EMOC approval.



POS.	PART NAME	MATERIAL	NOTE
1	BODY	A352-LCC	(1)
2	SEAT RING	B564-N06625	(2)
3	BALL	A350-LF2 Cl.1	(4)
4(a)	STEM	B446-N06625	(5)
4(b)	STEM	UNS N06625	-
5	BONNET	A350-LF2 Cl.1	(1)
6	BONNET GASKET	UNS N08825/GRAPHITE	-
7	STUD BOLT	A320-L7M	-
10	STUD BOLT NUT	A194-Gr.7M	-
17	FIRE SAFE GASKET	GRAPHITE	-
17C	STEM GASKET	PTFE	(3)
19	SUPPORT PLATE	UNS S31600	-
23	THRUST BEARING	UNS N06625+SINTERING+PTFE	-
40	RETAINER RING	UNS N06625	-
50	COVER	UNS N06625	-
51C	LANTERN	B148 C95800	(G)
52	DRAIN PLUG	UNS N08825	-
58	VENT PLUG	UNS N08825	-
62	CAP SCREW	API 6A-718 CRA	-
65P	SEAT GASKET	PTFE	(3)
67	THRUST BEARING	UNS N06625+SINTERING+PTFE	-
72	SPRING	UNS R30003 ELGILOY	-
89	PUP PIECE	B705-N06625 Gr.1	-
95A	STEM INJECTOR	UNS N06625	-
149	FIRE SAFE GASKET	GRAPHITE	-
152	UPPER TRUNNION BEARING	UNS N06625+SINTERING+PTFE	-
153	LOWER TRUNNION BEARING	UNS N06625+SINTERING+PTFE	-
208	THRUST BEARING	UNS N06625+SINTERING+PTFE	-
276	ANTISTATIC DEVICE	UNS R30003 ELGILOY	-
408	STEM BEARING	UNS N06625+SINTERING+PTFE	-
486E	SPRING HOLDER	B564 N08825	(G)

(1) - UNS N06625 OVERLAY ON ALL WETTED SURFACES AND ON ALL SEAL AREA (FULLY CLADDED)
 (2) - PEEK INSERT
 (3) - CHEVRON TYPE
 (4) - UNS N06625 WELDING OVERLAY (FULLY CLADDED)
 (5) - Or B446-N06625

NS	BW	A	B	H	SCH.	TAG	CUSTOMER CODE
20"	1321	1721	200	585	735	80	VBA9937-D31

NS	BIFFI PNEUMATIC ACTUATOR								WEIGHT		
	TYPE	AA	BB	CC	DD	EE	FF	GG	VALVE	ACT.	TOT
(a) 20"	ALGAS 6S-2500-585/CL-MRHW	1906	1248	1206	520	391	843	1849	4025	1650	5675
(b)	ALGAS 6S-3800-735/CL-MRHW	2136	1982	1206	592	392	1120	1855	4025	2063	6088

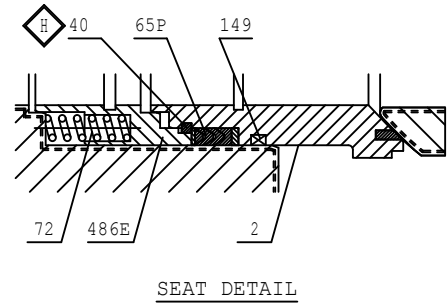
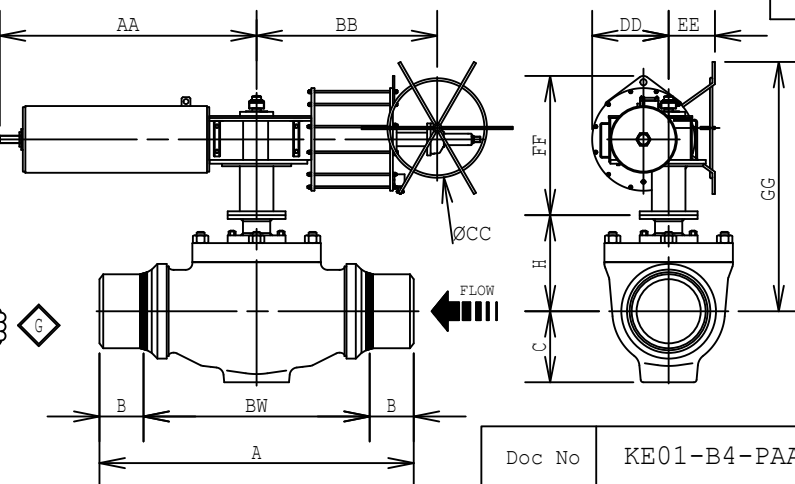
- (*) - B4-2001-ESV-026
 - B4-2001-ESV-031
 - B4-3100-ESV-005
 - B4-3100-ESV-007

eMOC NUMBER: eMoc#20284

DESIGN LIMITS
 T min.: -40°C
 T max.: 150°C

REF. TO ATEX: 94/9/CE
 VALVE MARKING: II 2 GD
 TECH. FILE: 8000 307 595

VALVES COMPLYING WITH REQUIREMENTS OF FOLLOWING CODES, STANDARDS AND SPECIFICATIONS:
 - API 6D - API 6FA - API 598
 - ISO 15848/1&2
 AND DOCUMENTS THEREIN MENTIONED



- (a) - ORIGINAL SAFETY FACTOR: 1.25
 (b) - SAFETY FACTOR: 2

CONCESSION REQUEST

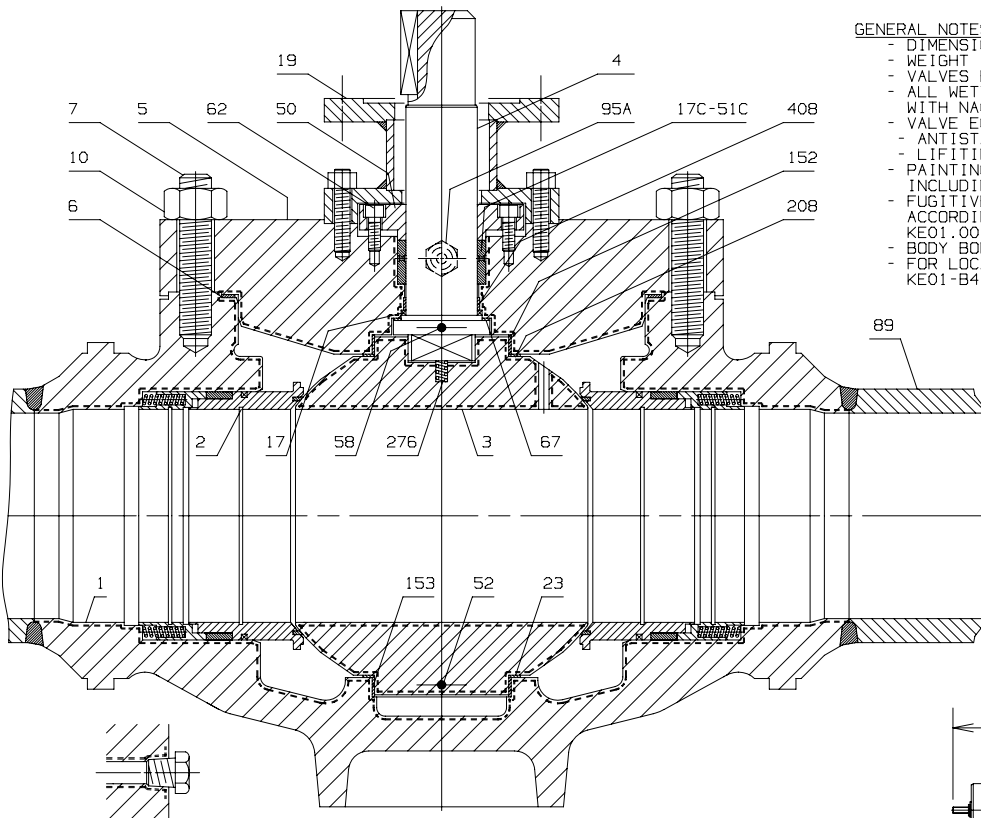
Ball Valve Stem Leak Detection Plug	
No.	KE01-VC-B02-P-F08-00930
Product form of valve internals	
No.	KE01-VC-B02-P-F08-01553

REV	DATE	REASON FOR ISSUE	PREP.	VERIF.	APPR.	
H	12/11/19	REVISION	H	TS	RM	ER
G	19/06/19	REVISION	G	TS	RM	GO
F	17/01/19	UPDATE	F	TS	RM	GO
E	06/09/07	RUSSIAN TRANSLATION	E	PD	PD	GC
D	20/06/07	GENERAL REVISION	D	PD	PD	GC
C	22/03/07	GENERAL REVISION	C	PD	PD	GC
B	17/07/06	GENERAL REVISION	B	PD	PD	GC
A	06/03/06	GENERAL REVISION	A	PD	PD	GC
0	19/10/05	FIRST ISSUED	0	PD	PD	GC

PETROLVALVES S.r.l.
 CASTELLANZA - ITALY

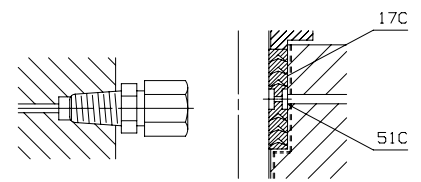
PV. JOB No: -
 CUSTOMER: AKER KVAERNER
 P.O. No: PAAI53A
 BALL VALVE - TOP ENTRY
 BOLTED BONNET TYPE
 FIRE SAFE - FULL BORE
 TRUNNION MOUNTED
 CLASS 900
 REV H
 DWG.No DE05/2783-2615

Doc No	KE01-B4-PAAI53A-B01-0016-001	Rev	05
P/O No	PAAI53A	Contract No.	2003-1018
Tag No.	SEE TABLE	Date	06/09/07
Reviewing Engineer			
<input type="checkbox"/> I	ACCEPTED FOR INFORMATION ONLY, SUBMIT RUSSIAN TRANSLATION IF REQUIRED		
<input type="checkbox"/> R	RETURNED WITH COMMENTS, REVISE AND RESUBMIT FOR FURTHER REVIEW		
<input type="checkbox"/> U	UNACCEPTABLE-MAJOR COMMENTS.REVISE AND RESUBMIT FOR FURTHER REVIEW. WORK SHALL NOT PROCEED IN THE AFFECTED AREAS UNTIL COMMENTS ARE RESOLVED		
<input type="checkbox"/> F	ACCEPTED - NO COMMENTS.SUBMIT RUSSIAN TRANSLATION IF REQUIRED.		
<input type="checkbox"/> T	RUSSIAN TRANSLATION ACCEPTED-NO COMMENTS		

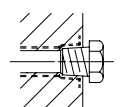


GENERAL NOTES :
 - DIMENSIONS IN mm.
 - WEIGHT IN Kg. APPROX.
 - VALVES ENDS "BW" TYPE AS PER ASME B16.25
 - ALL WETTED PARTS AND BOLT IN ACCORDANCE WITH NACE MR-01-75 ED.2003
 - VALVE EQUIPPED WITH:
 - ANTISTATIC DESIGN
 - LIFTING LUG
 - PAINTING SYSTEM - 3B FOR ALL VALVE COMPONENTS INCLUDING BOLT
 - FUGITIVE EMISSION REQUIREMENTS ACCORDING TO APPENDIX G OF CLIENT SPEC. KE01.00.000.KD.P.ST.0014.000
 - BODY BONNET NUT HEAVY HEX WITH SUPPLEMENTARY REQUIREMENTS S3
 - FOR LOCAL CONTROL PANEL REF. DRW. KE01-B4-PA153A-B01-0002-001 (REMOTE MOUNTING)

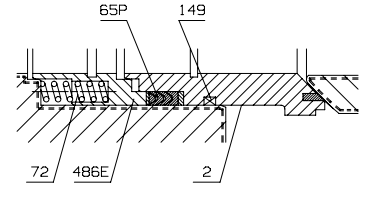
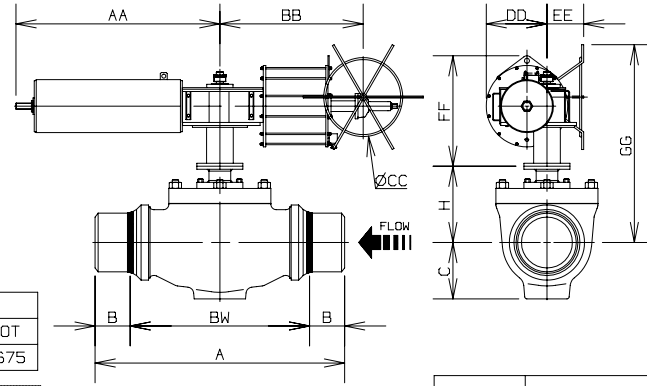
--- - UNS N06625 WELDING OVERLAY (FULLY CLADDED)



POSITION No. 95A
 STEM INJECTOR DETAIL STEM GASKET DETAIL



POSITION No. 52-58
 DRAIN AND VENT PLUG DETAIL



SEAT DETAIL

NS	BW	A	B	C	H	SCH.	TAG	CUSTOMER CODE
20"	1321	1721	200	535	735	80	(*)	VBA9937-D31

BIFFI PNEUMATIC ACTUATOR								WEIGHT			
NS	TYPE	AA	BB	CC	DD	EE	FF	GG	VALVE	ACT.	TOT
20"	ALGAS 65-2500-585/CL-MRHW	1906	1248	1206	520	391	843	1849	4025	1650	5675

- (*) - B4-2001-ESV-026
- B4-2001-ESV-031
- B4-3100-ESV-005
- B4-3100-ESV-007

DESIGN LIMITS	
T min.:	-40°C
T max.:	150°C

VALVES COMPLYING WITH REQUIREMENTS OF FOLLOWING CODES, STANDARDS AND SPECIFICATIONS:
 - API 6D - API 6FA - API 598
 - ISO 15848/1&2
 AND DOCUMENTS THEREIN MENTIONED

REF. TO ATEX:	94/9/CE
VALVE MARKING:	II 2 GD
TECH. FILE:	8000 307 595

PV PETROLVALVES S.r.l.
 CASTELLANZA - ITALY

P.V. JOB No: -
 CUSTOMER: AKER KVAERNER
 P.O. No: PAA153A

BALL VALVE - TOP ENTRY
 BOLTED BONNET TYPE
 FIRE SAFE - FULL BORE
 TRUNNION MOUNTED

CLASS
 900

DWG. No DE05/2783-2615

POS.	PART NAME	MATERIAL	QTY
1	BODY	A352-LCC	(1)
2	SEAT RING	B564-N06625	(2)
3	BALL	A350-LF2 C1.1	(4)
4	STEM	B564-N06625	(5)
5	BONNET	A350-LF2 C1.1	(1)
6	BONNET GASKET	UNS N08825/GRAPHITE	-
7	STUD BOLT	A320-L7M	-
10	STUD BOLT NUT	A194-Gr.7M	-
17	FIRE SAFE GASKET	GRAPHITE	-
17C	STEM GASKET	PTFE	(3)
19	SUPPORT PLATE	CARBON STEEL	-
23	THRUST BEARING	UNS N06625/PTFE COATED	-
50	COVER	A350-LF2 C1.1	-
51C	LANTERN	B148-958	-
52	DRAIN PLUG	UNS N08825	-
58	VENT PLUG	UNS N08825	-
62	CAP SCREW	A320-L7M	-
65P	SEAT GASKET	PTFE	(3)
67	THRUST BEARING	UNS N06625/PTFE COATED	-
72	SPRING	INCONEL X-750	-
89	PUP PIECE	B705-N06625 Gr.1	-
95A	STEM INJECTOR	UNS N06625	-
149	FIRE SAFE GASKET	GRAPHITE	-
152	UPPER TRUNNION BEARING	UNS N06625/PTFE COATED	-
153	LOWER TRUNNION BEARING	UNS N06625/PTFE COATED	-
208	THRUST BEARING	UNS N06625/PTFE COATED	-
276	ANTISTATIC DEVICE	INCONEL X-750	-
408	STEM BEARING	UNS N06625/PTFE COATED	-
486E	SPRING HOLDER	UNS N08825	-

- (1) - UNS N06625 OVERLAY ON ALL WETTED SURFACES AND ON ALL SEAL AREA (FULLY CLADDED)
- (2) - PEEK INSERT
- (3) - CHEVRON TYPE
- (4) - UNS N06625 WELDING OVERLAY (FULLY CLADDED)
- (5) - Or B446-N06625

CONCESSION REQUEST	
Ball Valve Stem Leak Detection Plug	
No.	KE01-VC-B02-P-F08-00930
Product form of valve internals	
No.	KE01-VC-B02-P-F08-01553

REV	DATE	REASON FOR ISSUE	PREP.	VERIF.	APPR.
E	06/09/07	RUSSIAN TRANSLATION	PD	PD	GC
D	20/06/07	GENERAL REVISION	PD	PD	GC
C	22/03/07	GENERAL REVISION	PD	PD	GC
B	17/07/06	GENERAL REVISION	PD	PD	GC
A	06/03/06	GENERAL REVISION	PD	PD	GC
0	19/10/05	FIRST ISSUED	PD	PD	GC

Doc No	KE01-B4-PA153A-B01-0016-001	Rev	05
P/O No	PAA153A	Contract No.	2003-1018
Tag No.	SEE TABLE	Date	06/09/07
Reviewing Engineer			
<input type="checkbox"/> I	ACCEPTED FOR INFORMATION ONLY. SUBMIT RUSSIAN TRANSLATION IF REQUIRED		
<input type="checkbox"/> R	RETURNED WITH COMMENTS, REVISE AND RESUBMIT FOR FURTHER REVIEW		
<input type="checkbox"/> U	UNACCEPTABLE-MAJOR COMMENTS,REVISE AND RESUBMIT FOR FURTHER REVIEW. WORK SHALL NOT PROCEED IN THE AFFECTED AREAS UNTIL COMMENTS ARE RESOLVED		
<input type="checkbox"/> F	ACCEPTED - NO COMMENTS.SUBMIT RUSSIAN TRANSLATION IF REQUIRED.		
<input type="checkbox"/> T	RUSSIAN TRANSLATION ACCEPTED-NO COMMENTS		