

Design Results

Reinforced Concrete Columns

GENERAL INFORMATION:

Design Code : ACI 318-2014 (Intermediate)

Load Conditions included in design:

D1 : 1.4DL
 D2 : 1.2DL+1.6LL
 D3 : 1.2DL+EQz
 D4 : 1.2DL+EQz+LL
 D5 : 0.9DL+EQz

Materials

Concrete, f'c	:	6.00 [Kip/in2]	Steel, fy	:	60.00 [Kip/in2]
Concrete type	:	Normal	Steel, fyt	:	60.00 [Kip/in2]
Modulus of elasticity	:	4415.20 [Kip/in2]	Type of splices	:	Tangential
Unit weight	:	0.15 [Kip/ft3]	Minimum provided Rho	:	0.010
Maximum provided Rho	:	0.080			

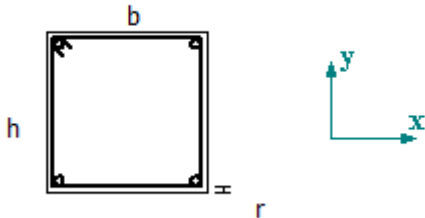
General status : OK

COLUMN DATA : 1

Geometry

Section type : Rectangular
 Column location : Center
 Distance between levels : 34.70 [ft]
 Width b (// to axis x) : 24.00 [in]
 Height h (// to axis y) : 24.00 [in]

Rebar



Longitudinal	:	4-#11
Free cover	:	1.00 [in]
As provided	:	6.24 [in2]
Provided Rho	:	0.011
Number of bars // to axis x	:	2
Spacing between bars	:	18.18 [in]
Number of bars // to axis y	:	2
Spacing between bars	:	18.18 [in]
Transverse	:	18 #4 @ 4.00", 62 #4 @ 4.00", 18 #4 @ 4.00"
Number of legs // to axis x	:	2
Number of legs // to axis y	:	2
Initial spacing (Sini)	:	0.00 [in]
So provided	:	4.00 [in]
Provided Lo	:	65.00 [in]