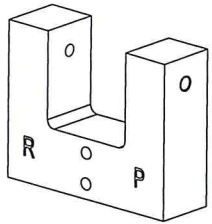
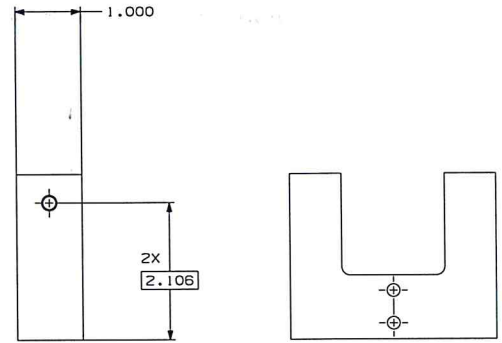
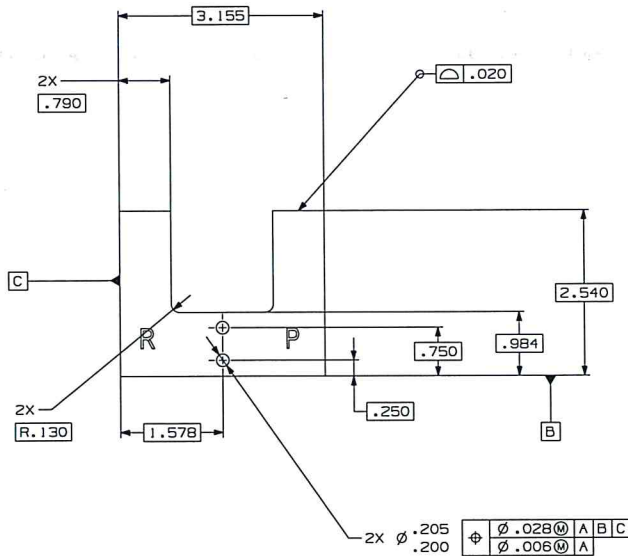


| IF IN DOUBT ASK |              |                  |
|-----------------|--------------|------------------|
| ISS             | ALTERATION   | ISSUED BY & DATE |
| A               | *            | *                |
| B               |              |                  |
| C               |              |                  |
| 1               |              |                  |
| 2               |              | 01 FEB 08        |
| 3               |              | 28 FEB 08        |
| 4               | RUMBLE ADDED | 01 MAY 08        |
| 5               | 00034        | 21 MAR 11        |
| 6               | 00046        | SMCC 08 NOV 2012 |
| 7               | TBC          |                  |

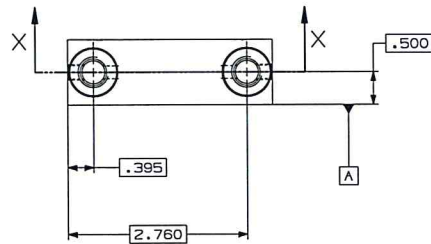
| REF NO | PART NUMBER | DESCRIPTION | QTY | REMARKS |
|--------|-------------|-------------|-----|---------|
|        |             |             |     |         |



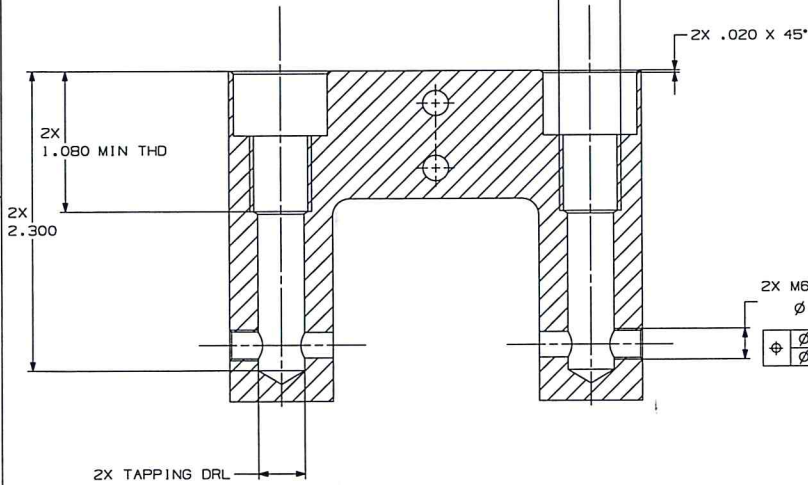
SCRAP ISOMETRIC VIEW



2X M12 X 1.5-6H  
 $\perp \phi .720 \nabla 0.500$   
 $\oplus \phi .028 @ B | A | C$



AUXILLARY VIEW SHOWING LOCATION OF LASER ENGRAVING  
 LASER ENGRAVE 'R' & 'P' IN POSITIONS SHOWN (THIS FACE ONLY)



2X M6 X 1-6H  $\nabla 0.312$   
 $\phi .201$  THRU  
 $\phi .197$   
 $\oplus \phi .014 @ C | A | B$   
 $\phi .006 @ C$

- FOR INSPECTION PURPOSES, AFTER MACHINING DATUM FACE [C] TO BE MARKED WITH AN INDELIBLE MARKER
- DEBURR ALL SHARP EDGES WITH .002/.015 X 45° BREAK EDGE
- RUMBLE IN ACCORDANCE WITH
- ANODISE & DYE BLACK IN ACC (SURFACE TREATMENT ALLOWAN)
- LASER ENGRAVE AFTER ANODIS
- PACKAGE & PROTECT TO PREVEI

SECTION X-X  
 SCALE 2:1

FINISH STATED

TOLERANCES UNLESS OTHERWISE STATED 1:1