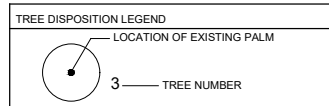


NOTE: ALL BASE INFORMATION INDICATES EXISTING CONDITIONS FROM SURVEY BY J. BONFILL & ASSOC. 8/7/2020



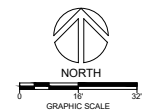
TREE DISPOSITION LIST

Tree Number	Botanical Name	Common Name	Height (Feet)	Spread (Feet)	Cond.	Disposition	Canopy (Sq. Ft.)	Note
1	Sabal Palmetto	Cabbage Palm	12	8	Fair	Remove	50	
2	Adoridia merillii	Christmas Palm	15	10	Fair	Remove	79	4 trunks
3	Sabal Palmetto	Cabbage Palm	12	8	Fair	Remove	50	
4	Psychosperma elegans	Solitaire Palm	25	10	Fair	Remove	79	4 trunks
5	Psychosperma elegans	Solitaire Palm	25	10	Fair	Remove	79	4 trunks
6	Psychosperma elegans	Solitaire Palm	20	10	Fair	Remove	79	3 trunks
7	Psychosperma elegans	Solitaire Palm	16	10	Fair	Remove	79	3 trunks
8	Adoridia merillii	Christmas Palm	15	10	Fair	Remove	79	4 trunks
9	Adoridia merillii	Christmas Palm	15	10	Fair	Remove	79	4 trunks
10	Sabal Palmetto	Cabbage Palm	10	8	Fair	Remove	50	
11	Sabal Palmetto	Cabbage Palm	10	8	Fair	Remove	50	
12	Sabal Palmetto	Cabbage Palm	10	8	Fair	Remove	50	
13	Adoridia merillii	Christmas Palm	10	8	Fair	Remove	50	3 trunks

Note: Palm heights are given as clear trunk (C.T.) height.

TOTAL CANOPY REMOVED (S.F.) 881

TOTAL CANOPY REPLACED (S.F.) XXXXXX

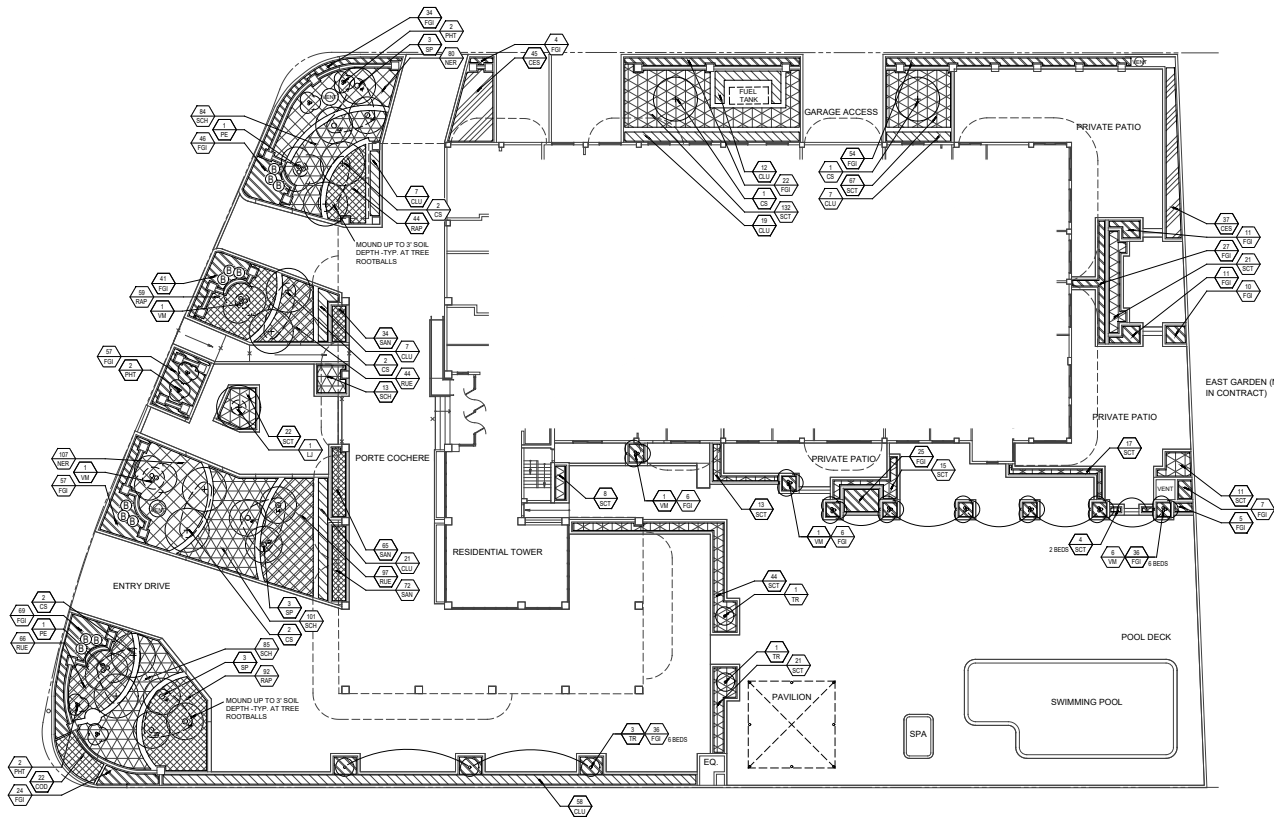


Project Name
Champlain Towers South Condominium
 8777 Collins Avenue, Surfside, FL 33154
 Drawing Title
TREE DISPOSITION PLAN

REITLY ROY
 Landscape Architects/Planners P.A.
 412 North Andrews Avenue
 Fort Lauderdale, FL 33304
 Florida License Number LA3993
 Fax 954 462-0722
 Phone 954 462-0754
 rrla@reitlyroy.com

Harbert C. Hodgman
 L.A.C.000004
 Design
 Project No.
 19034
 CAD File No.
 19034
 Date
 3/31/2021
 Scale
 1/6" = 1'-0"
 Drawing No.

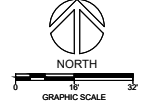
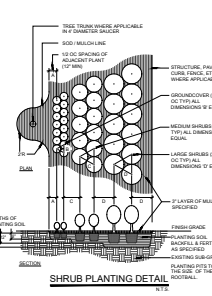
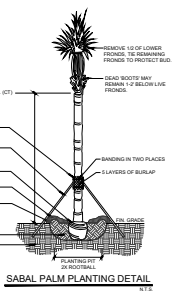
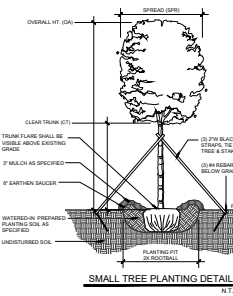
LD-1



NOTE: INSTALL SPECIFIED SOIL TO 18" DEPTH, 36" DEPTH SURROUNDING TREE ROOT BALLS.

SYM.	ITEM	SPECIFICATION	QTY.
TREES			
CS	Conocarpus erectus 'Sericeus'	12ft., 5spr., 4ct. standard	10
LJ	Ligustrum japonicum	10ft. ht., 10'spr., full, multi. matched	1
PALMS			
PE	Ptychosperma elegans	10'-16' ca. ht., triple	2
SP	Alexander Palm		
SA	Sabal palmetto	9', 12 & 14' c.t. ht. noted on plan	9
TR	Thruak radata triple	7' ca. ht., 3' c.t. min. triple	5
VM	Trachid palm triple		
TR	Trachid palm triple	10'-12' ca. ht., triple	10
VA	Veitchia merrii triple		
AO	Azorella Palm		
SHRUBS			
B	Aschmea bianchetiana	3' H. x 3' spr., full	12
SUN	Sun Bromeliad		
CS	Conocarpus erectus 'Sericeus'	24" ht. x 24" spr., 24" o.c.	82
CS	Conocarpus erectus 'Sericeus'	24" ht. x 24" spr., 24" o.c.	22
OD	Ocotea v. 'Red Mammy'	24" ht. x 24" spr., 24" o.c.	131
CLU	Clusia guttifera	36" ht. x 30" spr., 30" o.c.	131
SM	Small Leaf Clusia	fall to base	588
FGI	Ficus macrophylla 'Green Island'	18" ht., 18" spr., 18" o.c.	187
FGI	Ficus Green Island		
NER	Nerium oleander 'Petae pink'	24" ht. x 24" spr., 24" o.c.	187
NER	Nerium oleander 'Petae pink'		
PHT	Phoenix roebelenii	3' min. clear trunk, triple stg	6
PHT	Pygmy Date Palm Triple		
RAP	Raphiolepis indica	24" ht. x 24" spr., 24" o.c.	195
RUE	Indian Hawthorn		
RUE	Ruellia brittaniana 'Purple Showers'	24" ht. x 24" spr., 24" o.c.	207
SCH	Schefflera arboricola	24" ht. x 24" spr., 24" o.c.	283
SCH	Green Dwarf Schefflera		
SCT	Schefflera arboricola 'Trinette'	24" ht. x 24" spr., 24" o.c.	375
SCT	Trinette Schefflera		
GROUNDCOVERS			
SAN	Sansevieria trifasciata 'Hahnii'	8" H., 12" oc. full	375
SAN	Snake plant		

- PLANT NOTES**
- ALL PLANTS TO BE FLORIDA NO. 1 GRADE OR BETTER.
 - NO SUBSTITUTIONS WILL BE ACCEPTED WITHOUT PRIOR WRITTEN APPROVAL BY THE LANDSCAPE ARCHITECT.
 - ALL LANDSCAPE AREAS TO RECEIVE 100% IRRIGATION COVERAGE WITH A MINIMUM 50% OVERLAP BY AN AUTOMATIC IRRIGATION SYSTEM. SYSTEM SHALL INCLUDE A RAIN SENSOR DEVICE. USE OF NON-POTABLE WATER (IF AVAILABLE) SHALL BE USED FROM A RUST FREE SOURCE.
 - QUANTITIES ON PLANT LIST ARE FOR CONVENIENCE ONLY. THE LANDSCAPE CONTRACTOR IS RESPONSIBLE FOR ALL PLANTS SHOWN ON PLANTING PLANS. WHEN DISCREPANCIES OCCUR BETWEEN THE PLANT LIST AND PLANTING PLANS, THE PLANS ARE TO OVERRIDE THE PLANT LIST IN ALL CASES.
 - CONTRACTOR IS RESPONSIBLE FOR LOCATING ALL UNDERGROUND UTILITIES PRIOR TO COMMENCING WORK.
 - ALL SHRUB AND GROUNDCOVER BEDS SHALL BE LAID OUT IN A UNIFORM AND CONSISTENT PATTERN AND SET IN A PERPENDICULAR LINE WHEN ABUTTING PAVEMENT OR BUILDINGS.
 - ALL TREES AND PALMS TO BE STAKED AND GUYED AS INDICATED ON DETAILS.
 - ALL PLANTING AREAS TO RECEIVE 3" LAYER OF GRADE B SHREDDED EUCALYPTUS MULCH. TOP OF MULCH SHALL BE 1" BELOW ANY ADJACENT PAVEMENT OR TOP OF WALL.
 - ALL PLANTERS TO BE BACKFILLED WITH 50% PEAT / 20% SAND / 20% RICE ROCK / 20% PERLITE PLANTING MIXTURE. 18" DEPTH, 36" DEPTH SURROUNDING TREE ROOT BALLS.
 - FERTILIZER SHALL BE APPLIED AS PER MANUFACTURERS RECOMMENDATIONS AS FOLLOWS:
 - SOD: 8-8-8
 - ANNUALS / GROUNDCOVER: OSMOCOTE SIERRA BLEND 14-14-14
 - SHRUBS, TREES, PALMS: AGRIFORM 20-10-5 TABLETS
 - ALL SOD SHALL BE SOLID WEED-FREE PANELS, LAID ON ONE INCH DEPTH OF TOPSOIL WITH STAGGERED JOINTS.
 - ALL MECHANICAL EQUIPMENT SHALL BE SCREENED ON THREE SIDES WITH APPROVED HEDGE.
 - ALL TREES PLANTED ADJACENT TO OVERHEAD POWER LINES SHALL CONFORM TO F.P.L. RIGHT TREE RIGHT PLACE GUIDELINES.
 - LANDSCAPE SHALL NOT OBSCURE FIRE HYDRANTS OR STANDPIPES.
 - ALL PLANT MATERIAL SHALL BE WARRANTED FOR ONE YEAR.



Project Name: **Champlain Towers South Condominium**
 8777 Collins Avenue, Surfside, FL 33154
 Drawing Title: **LANDSCAPE PLAN**

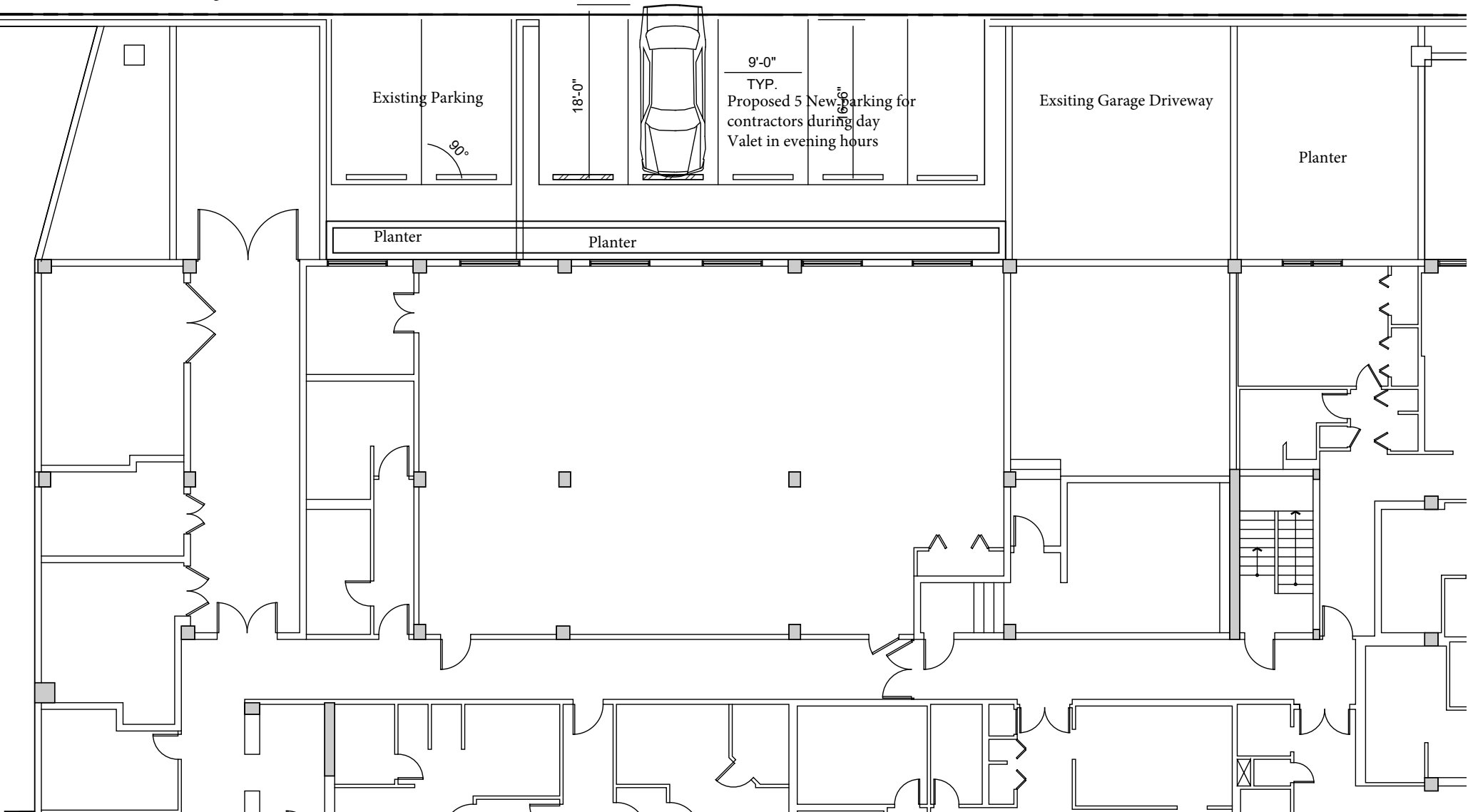
Project Name: **REITLY ROY**
 Landscape Architect/Planning P.A.
 412 North Andrews Avenue
 Fort Lauderdale, FL 33334
 Florida License Number LA393
 Fax: 954 462 0722
 Phone: 954 462 0726
 rty@reitlyroy.com

Prepared by: **Harbert C. Hodgman**
 Date: **3/31/2021**
 Project No.: **19034**
 CAD File No.: **19034**
 Scale: **1/6" = 1'-0"**
 Drawing No.:

LP-1

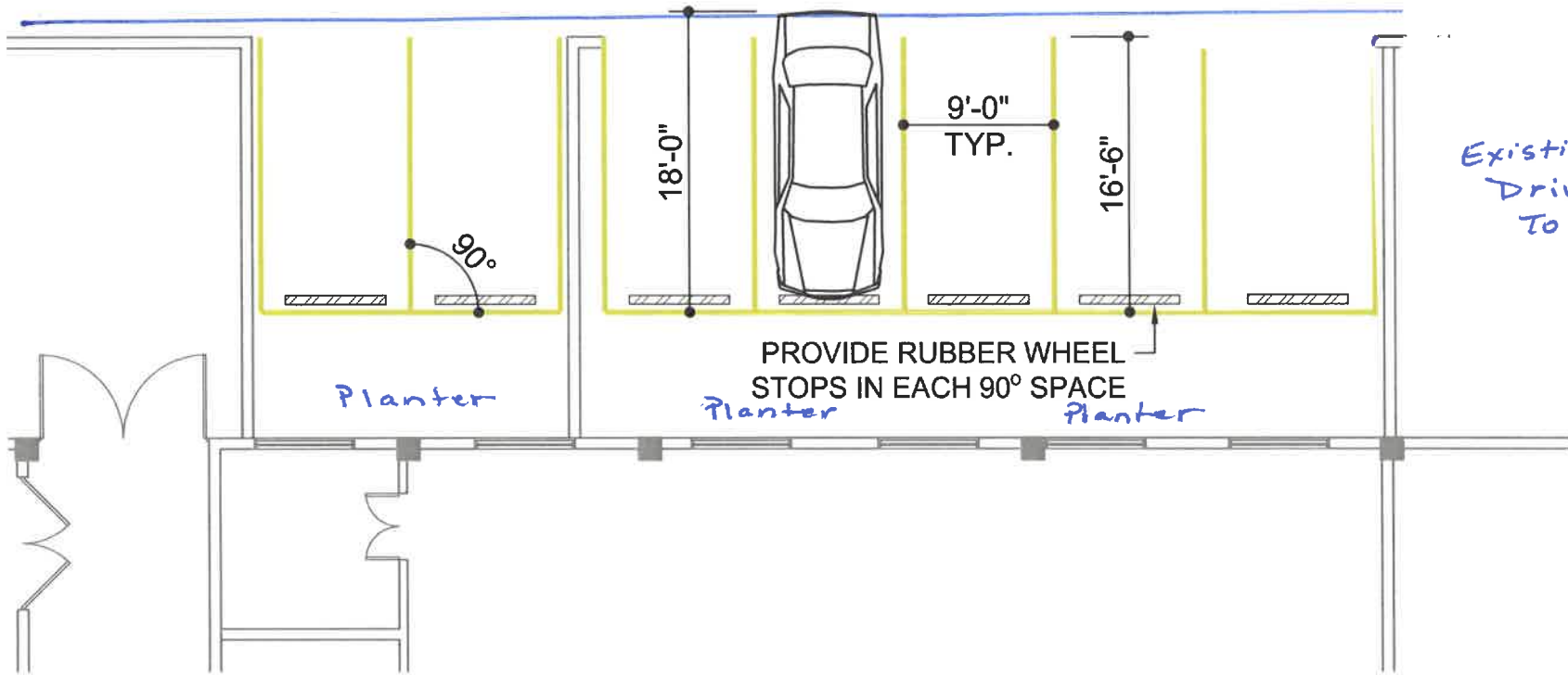
88TH STREET

Existing Sidewalk



88th Street

Side Walk



Existing Driveway To Garage

Planter

Planter

Planter

PROVIDE RUBBER WHEEL STOPS IN EACH 90° SPACE

9'-0" TYP.

18'-0"

16'-6"

90°



88th Street

Entry/
Exit

Temp valet parking for diplaced cars from garage / deck as repairs are made to garage area.
Alt: Stagging / parking area for restorer crew. Day time use only.



EAST ELEVATION



WEST ELEVATION



SOUTH ELEVATION

Champlain Towers South

8777 Collins Ave. SURFSIDE, FL.

Preliminary COLOR CHART		BENJAMIN MOORE Classic Colors Color Preview
Color -- A	-Main Bldg. Tower Color	
BM --- OC-28	Collingwood	Color Preview
Color -- B	-Secondary - Accent Bldg Color -Partial Accent Tower Base	
BM--- 1467	Baltic Gray	Classic Colors
Color -- C	-Inner Covers Accent Color -Partial South Side Tower Color	
BM -1649	Polaris Blue	Classic Colors

